

Sent Via E-mail

Mackenzie Valley Land and Water Board
7th Floor – 4910 50 Ave
P.O. Box 2130
Yellowknife, NT X1A 2P6

December 31, 2011

Attn: Lindsey Cymbalisy

Dear Lindsey:

Please find included with this electronic submission a copy of North American Tungsten Corporation Ltd. Cantung Mine Tailings Containment Area Operations Maintenance and Surveillance Manual and Emergency Preparedness and Response Plan, as required under Water Licence MV2002L2-0019. This Plan is submitted to satisfy the requirements of Section F.13 and F.14 of the Licence.

Please contact Doug Watt or myself should you have any questions regarding the information contained in either the report or the comments table.

Best Regards,

Laura Smithies (signed electronically)

Laura Smithies
Sr. Environmental Coordinator
North American Tungsten Corporation Ltd.
Cantung Mine
(604)759 0913 ext 275
lsmithies@natcl.ca or cantungenviro@natcl.ca

cc: Michael Martin (AANDC), Jason McKenzie (NATCL), Christina Scott (NATCL), Rick Hoos (EBA), Cantungenviro



CANTUNG MINE

**EMERGENCY PREPAREDNESS PLAN, EMERGENCY RESPONSE PLAN-TAILINGS
TUNGSTEN, NT**

December 2011

**ORIGINAL PREPARED BY EBA ENGINEERING CONSULTANTS LTD.
UPDATES PREPARED BY NORTH AMERICAN TUNGSTEN CORPORATION LTD.**

Copy #: _____ Assigned To: _____

Revision History

Revision Version	Author	Managerial Approval	Date: (MM/DD/YYYY)	Reason for Change
0	EBA Engineering Consultants Ltd.	Doug Watt, Environmental Superintendent	03/25/2009	Initial Plan
1	North American Tungsten Corporation Ltd.	Doug Watt, Environmental Superintendent	03/31/2011	Update to Original EBA Document
2	North American Tungsten Corporation Ltd.	Doug Watt, Environmental Superintendent	12/31/2011	Update to Original EBA Document

DISTRIBUTION LIST

Copy #	Affiliation	Position
1	NATCL	Head Office
2	NATCL	Mine Manager
3	NATCL	Environmental Superintendent
4	NATCL	Safety Department
5	NATCL	Mill Superintendent
6	MVLWB	Regulatory Officer

	PAGE
1.0 INTRODUCTION	1
2.0 BEING PREPARED	1
3.0 DEFINITION OF AN EMERGENCY	1
4.0 EMERGENCY SEVERITY AND CONSEQUENCES	2
5.0 GENERAL EMERGENCY PROCEDURES	2
5.1 All Employees.....	2
5.2 Observer.....	3
6.0 INITIAL NOTIFICATION	3
7.0 REPORTING STATION	4
8.0 CODE ONE EMERGENCY RADIO PROTOCOL	5
8.1 Reporting Stations Contacts.....	5
9.0 EMPLOYEE TALLY	5
10.0 O.F.A LEVEL 3 FIRST AID TRAINED PERSONNEL	6
11.0 DUTIES / RESPONSIBILITIES	7
11.1 Mine Manager.....	7
11.2 Response Coordinator.....	7
11.3 Area Supervisor	8
11.4 Safety Officer.....	9
11.5 Administration Office / Main Office	9
11.6 First Aid / Ambulance.....	10
11.7 Mine Rescue Team.....	10
12.0 MINE RESCUE PERSONNEL	11
12.1 ERT PERSONNEL	12
13.0 EVACUATION PROCEDURES	12
13.1 Assembly Areas.....	12
13.2 Tailings Disposal Area	13
14.0 FIRE PROCEDURES	13
15.0 TAILINGS BREACH EMERGENCY PROCEDURE	14
16.0 VEHICLE ACCIDENT EMERGENCY PROCEDURE	14
17.0 EMERGENCY RESPONSE FLOWCHART	15

	PAGE
18.0 EMERGENCY COMMUNICATIONS LOG.....	16
19.0 OFF-SITE CONTACT NUMBERS	17
19.1 Cantung Personnel.....	18
20.0 AIR MEDICAL EVACUATION	19
20.1 Initiating a Medivac	19
20.2 Medical Evacuation Background	20
21.0 CLOSURE.....	20

1.0 INTRODUCTION

This document outlines the Emergency Preparedness Plan (EPP) for incidents and emergency situations that may occur within the vicinity of the Cantung Mine Tailings Storage Facility (TSF). These plans include measures to prevent incidents and mitigate the risks to the public, mine personnel, the surrounding environment and capital assets, both on and off the site, associated with emergency situations. This document is not a stand-alone document and is intended to be used in conjunction with the Cantung Operation Maintenance and Surveillance (OMS) manual and the Cantung Mine Emergency Response Plan (ERP).

2.0 BEING PREPARED

Because of the Cantung Mine's remoteness, a high degree of self-sufficiency is required during and after an emergency. An essential and proactive part of the EPP is knowledge of what to do in case of an emergency and how to help avoid an emergency via preventative maintenance and regular safety meetings.

Prior to starting work at Cantung, all employees are given an induction and orientation training session. The purpose of these sessions is to ensure all new employees have sufficient knowledge of company's policies and procedures, emergency evacuation procedures, and job site emergency procedures, as well as to define the roles of these individuals in an emergency situation.

All employees will be trained to respond to emergencies such as fires, spills, and injuries, allowing an efficient response during and after an emergency. Operations personnel working in and monitoring the TSF will be briefed on emergency situations that may occur in the TSF. A list of possible emergencies has been prepared and is presented in Section 3.0.

3.0 DEFINITION OF AN EMERGENCY

Emergencies in the TSF can be initiated in one of two ways; a natural emergency is beyond the control of the mine operational crew (i.e., an earthquake or extreme flood event) while an operational emergency is an incident that is related to the infrastructure or personnel operating the mine (i.e., tailings line burst or pump breakdown). Irrespective of how the emergency is initiated, each incident will require some measure of action to be taken to control and manage the situation. Depending on the severity of the incident, this will involve communication to management groups and, if required, formal notice will be sent to the various environmental and regulatory authorities at a territorial or federal level.

Natural emergencies could involve, but are not limited, to the following:

- Earthquake;
- Extreme precipitation event;
- Rapid freshet (rapid thawing of winter snow pack);
- Extreme flood event (high surface water run-off and high river levels in the Flat River);
- Tornado;

- Hail storm;
- Avalanche;
- Rock falls; and
- Site and forest fires.
- Operational emergencies could involve, but are not limited, to the following:
 - Equipment or process logic failure;
 - Slope or foundation failure;
 - Overtopping of tailings dam or water retention structure;
 - Power failure;
 - Seepage or piping (visual observation of water leaking through dam);
 - Visual observation of cracks in dam structure;
 - Fire;
 - Explosion;
 - Loss of life or injury;
 - Loss of vehicle control;
 - Significant reportable spills or hazardous chemical release; and
 - Toxic gas release.

4.0 EMERGENCY SEVERITY AND CONSEQUENCES

Though all the incidents described in Section 3.0 are classified as emergencies, the severity of any particular emergency can be further classified from moderate to severe. The classification of emergencies is based on the possible consequences that could arise from the emergency situation. Consequences of an emergency fall into three categories (in order of increasing severity): capital damage, environmental damage, or human damage. In cases where more than one type of damage may occur, Cantung's emergency response priorities will first seek to minimize human damage, followed by environmental damage, and lastly capital damage.

5.0 GENERAL EMERGENCY PROCEDURES

5.1 ALL EMPLOYEES

Every employee shall be made aware of the normal hazards associated with their work area as well as any emergency procedures particular to the work area. A sudden change from normal conditions may result in an unusual and dangerous situation. Employees that observe a possible emergency should immediately remove themselves from any immediate hazards before initiating the appropriate emergency response as discussed in Section 6.0.

5.2 OBSERVER

The person discovering a situation requiring emergency action shall:

- Initiate the alarm by calling out in a loud voice to warn others in the immediate area;
- If required, activate the fire alarm and siren; and
- Use the radio or other communication system to advise the Reporting Station of the situation.

The designated Reporting Station is the Main Office (EXT 221 or 225) during office hours. After hours reports shall be made to the Mill Shift Supervisor's Office (EXT 294).

The observer will ensure that the Reporting Station and/or the Area Supervisor are notified as soon as it is safe to do so. The emergency radio protocol, outlined in Section 8.0, shall be observed to ensure the response team receives the necessary information when responding to the emergency call.

“An attempt to control the situation may be made if it can be accomplished without risk of personal injury. Before attempting to control the situation, an individual must advise the Reporting Station of the situation or designate another person to do so.”

“If there is a imminent risk of personal injury the observer shall remove himself to a safe area or muster point, inform the Reporting Station of the emergency and await the arrival of the emergency response team.”

6.0 INITIAL NOTIFICATION

Persons discovering the emergency shall:

1. Warn all personnel in the immediate area if possible.
2. Establish communications with the Reporting Station. If the emergency is being reported by radio, **Channel 3** should be used if possible.
3. Be prepared to provide the following information:
 - Your name and location of emergency
 - Nature or type of emergency
 - Response requirements for the emergency (ambulance, mine rescue personnel, etc.)
 - Number and severity of injuries
 - Any other important details

All persons shall:

1. If not immediately requested to assist, evacuate to the designated assembly area.
2. Await further instruction from the Reporting Station. The Area Supervisor or designate shall perform an employee tally.
3. Not leave the assembly area or go back into the area until the “stand down” order is given by the reporting station and the area is declared safe.

4. Maintain radio silence unless providing information requested by the Reporting Station or the response team and not make any off-site phone calls with details of emergency.

7.0 REPORTING STATION

The designated Reporting Station is the Main Office (EXT 221 or 225) during office hours. After hours reports shall be made to the Mill Shift Supervisor's Office (EXT 294).

As the central communications centre, it is the responsibility of the Reporting Station to gather the necessary information about the emergency and relay it to the appropriate personnel. For most emergencies occurring in the TSF the Mill Shift Supervisor and the Mine Rescue Team are the primary contacts. The Reporting Station is also responsible for initiating the Code One protocol. Both Reporting Stations shall be equipped with a base station radio transmitter that is solely for monitoring Channel 3, Cantung's emergency channel.

The following are the duties of and responsibilities of the reporting station after receiving notice of an emergency.

- Obtain all necessary information from the caller including:
 - Who is calling
 - Exact location of emergency
 - Type of emergency
 - Number of injuries and the extent of the injuries
 - Type of response required
- If it is safe for the caller to do so, have him stand by for further instruction or to provide additional information. In some cases, such as small fires, the caller may attempt to control the situation. The Reporting Station may delay activating the emergency protocol if the caller maintains constant contact with the Reporting Station and indicates that the situation is not worsening. If the Reporting Station loses contact with the caller, the emergency protocol should immediately be activated.
- Initiate the "Code 1" emergency protocol (Section 8.0)
- Activate the Mine Rescue Team if required
- Call Mill Shift Supervisor and provide details of the emergency
- Notify the Main Office and senior staff if required.
- Remain on standby to receive calls and relay information to the emergency response team.
- The Mine Rescue Captain or Mill Shift Supervisor will notify the Reporting Station when the emergency is over. The Reporting Station shall relay the stand-down order over the radio ending the Code One protocol.

The Reporting Station is the central point of contact during an emergency situation. A copy of the emergency procedures and the Code 1 protocol should be placed in a conspicuous location at the main and alternate Response Stations.

8.0 CODE ONE EMERGENCY RADIO PROTOCOL

The intent of the Code One Emergency Protocol is to ensure a timely response to emergency situations at Cantung Mine. When the protocol call is initiated, all work activities are to cease as soon as it is safe to do so. The cessation of activities is to minimize the risk of secondary incidents occurring on the site while the emergency team is responding to the primary incident. The protocol also forbids radio traffic except for communication pertaining directly to the current emergency or any other emergency that has arisen on site.

- The Reporting Station will announce “Code One Code One Code One” on the each of the site’s radio channels.
- The Reporting Station will then monitor Channel 3 to relay information to and from the emergency response team as required.
- When the Mill Shift Supervisor or the Mine Rescue Captain contacts the Reporting Station and declares a “stand-down” the Reporting Station will announce “ Code One stand-down, please resume normal operation” on each of the site’s radio channels.

8.1 REPORTING STATIONS CONTACTS

MAIN CONTACT INFORMATION			
Reporting Station	Phone #	Local	Radio Channel
Main Office	604.759.0913	221 or 225	Channel 2, 3 Freq: 158.550
	604.759.0913	235, 294, 232	
Emergency #	604.759.0913	223, 241	

AFTER HOURS			
Reporting Station	Phone #	Local	Radio Channel
Mill Shift Supervisor	604 759 0913	294	Channel 2, 3

9.0 EMPLOYEE TALLY

In the event of an emergency, a systematic employee tally must be carried out to ensure every one is accounted for. Every person who had access to the area where the emergency occurred must be accounted for. The following protocol must be followed:

1. Individuals entering the area during the emergency must have permission from the Mill Shift Supervisor, Mine Rescue Captain or designated individual. Additionally, upon leaving the emergency area, all persons must check out to ensure that an accurate tally is maintained at all times.



2. Area Supervisors must begin a tally of employees working in their respective area of responsibility. This can be done through radio communication if required but personal confirmation is best to avoid additional radio traffic. Under no circumstances shall the tally take place on the emergency channel (Channel 3) unless specifically requested by the Mill Shift Supervisor or Mine Rescue Captain. Radio traffic on other channels shall be kept to an absolute minimum and then only for matters pertaining directly to the emergency response effort. Area supervisors shall then report the results of the tally directly to the Mill Shift Supervisor.
3. If anyone cannot be accounted for, an immediate search must be conducted in the area. The search will be initiated by the Mill Shift Supervisor or Mine Rescue Captain.
4. The Administration Office is responsible for the tally of all non-Cantung Mine personnel in the area. A list of all non-Cantung Mine personnel currently on site shall be maintained in a conspicuous location in the office at all times. Such personnel may include on-site contractors, salespersons, or visitors. The area supervisor must be informed of any non-Cantung personnel operating in his area.

10.0 O.F.A LEVEL 3 FIRST AID TRAINED PERSONNEL

Don Tibbo

Local # 223 day

Room # 101b

Radio Ch. # 1, 2, 3

Room Ph. local # 241 evening

Sandy Rezansoff

Local # 233 day

Room # 101a

Radio Ch. # 1, 2, 3

Room Ph. local # 241 evening

SAFETY OFFICERS

Don Tibbo, Sandy Rezansoff

Office: 759.0913 Local # 225

Local # 280 after 18:00

Alternate OFA 3

Tanya Brown, Greg Sheer

Brad Jamieson

Chris Koebel, Brian Hollaus, Brian Kutzy Sr.

EMERGENCY NUMBER 759-0913

EMERGENCY RADIO CH. # 2, 3 24 HOURS

11.0 DUTIES / RESPONSIBILITIES

11.1 MINE MANAGER

Upon hearing of an emergency or arriving at the scene of an emergency, the Mine Manager or his designate may assume full command. The manager will act as the agent of the company and as such will be responsible for:

- Coordinating all emergency procedures and response actions through various levels of company personnel and delegate authority where appropriate.
- Making available the resources necessary to deal effectively with the emergency including follow-up site rehabilitation.
- In conjunction with the safety coordinator, conducting all aspects of the investigation both at and away from the emergency scene.
- Responding to all inquires from the public and where necessary re-direct these inquires to the proper authority. Set guidelines as to what information may be released to the public.
- Ensuring that relatives and friends of possible victims are supplied with as much information as is available, provided this information does not jeopardize the investigation.
- Contacting the local Mines Inspector as required as per the Mine's Act.
- Contacting the various environmental and regulatory authorities as per Cantung's licensing agreements.
- Contacting R.C.M.P. (if required).
- Contacting Coroner (if required).
- Contacting Next of Kin (if required).
- Maintaining a log of occurrences.

11.2 RESPONSE COORDINATOR

As a Mill Superintendent is not present 24 hours a day, the Mill Shift Supervisor is responsible for coordinating the emergency response. If necessary, the Mill Superintendent (or the Mine Manager) may assume command of the response effort, but in most cases, the Mill Shift Supervisor is most familiar with the present state of operations. If both the Mill Superintendent and Mill Shift Supervisor are present, the duties should be shared between the two individuals. As the response coordinator, the Mill Shift Supervisor must ensure that staff under his direction are aware of their responsibilities under the plan and that they have the proper training to deal with emergencies in their work area. In addition, individuals shall receive specific training to perform response tasks such as the Employee Tally or other reporting.

When notified of an emergency, the Mill Shift Supervisor/Mill Superintendent shall:

- Attend the scene and take charge of the situation as required.

- Evaluate the situation and estimate the number of personnel needed to handle the emergency.
- Coordinate with the Reporting Station to ensure that emergency communication procedures have been followed.
- Coordinate with the Mine Rescue Captain if the Mine Rescue Team is required for the emergency;
- Designate individuals to execute specific duties, such as coordinating the Employee Tally;
- Ensure that the Employee Tally is properly executed and maintained throughout the emergency;
- Ensure that rescue or rehabilitation efforts are supplied with materials and equipment.
- In conjunction with the Mine Manager, arrange to have appropriate tasks assigned to all outside agencies and civilian personnel on site.
- Ensure that the well-being of those involved in the emergency situation is being considered (meals, safety equipment, etc.).
- Obtain and ensure all information relating to the emergency is collected and held for the accident investigation report.
- Collect all statements from witnesses, take pictures, protect evidence, and have area secured until investigation has been completed.
- Once the emergency response is complete, the Response Coordinator will submit a written report to the Safety Officer.

11.3 AREA SUPERVISOR

The Area Supervisor will often be better able to provide early response to the emergency than the Response Coordinator. Upon witnessing or receiving notice of a possible emergency situation, the Area Supervisor should evaluate the situation and provide Initial Notification as discussed in Section 6.0. If it is safe to respond, the Area Supervisor at the scene will assume command of the emergency until such time as control is passed to the Response Coordinator.

When an emergency occurs in his/her area, the Supervisor will:

1. Take prompt action to control the situation if safe to do so.
2. Withdraw personnel from the danger zone and account for all workers.
3. Direct workers not involved with the emergency to their assembly area with instructions to stay there until further advised.
4. Establish the identity and last known location of those workers who may be missing and report this information to the Response Coordinator.
5. Allow no personnel into the area unless authorized by the Response Coordinator.
6. Identify possible hazards in the area (fuel tanks, chemicals, etc.).

7. Maintain communications with reporting station.
8. Perform the Employee Tally for those working
9. As soon as time permits, prepare accident investigation and witness statement forms.

11.4 SAFETY OFFICER

The Safety Officer reports to the Mine Manager and will be responsible for:

- Supervising all first aid, ambulance, security, and rescue operations in coordination with the Response Coordinator and the Mine Rescue Team Captain;
- Ensuring first aid, rescue, and/or fire-fighting equipment is available to the accident scene.
- Obtaining the list of all on-site non-NATCL personnel from the main Reporting Station and performing the tally of these personnel.
- Coordinating call out of outside emergency agencies (P.E.P., Ministry of Mines, Air Medivac).
- Ensuring security of accident area until all authorized personnel and agencies have investigated.
- Monitoring all aspects of the subsequent investigation. A full report of all findings and actions taken must be prepared and made available to the Mine Manager.

11.5 ADMINISTRATION OFFICE / MAIN OFFICE

As the primary Reporting Station, the Main Office must be prepared to receive emergency calls. All individuals who work in the office must be trained how to properly receive emergency calls and to initiate the Emergency Radio Protocol. An emergency procedure manual for the Reporting Station and associated logbook shall be maintained in a conspicuous location in the Main Office. Additionally, an up-to-date list of all non-Cantung site personnel shall be kept with the procedure manual to assist with the Employee Tally. The general procedure when receiving an emergency call is to:

- Obtain all necessary information.
 - Name of observer;
 - Location of emergency
 - Type of emergency
 - Response requirements (ambulance, Mine Rescue Team, etc.)
 - Number and severity of injuries
 - Any other important details.
- Execute the Emergency Radio Protocol
- Notify Mill Shift Supervisor, Mill Superintendent, and Mine Manager as required.
- Contact additional staff personnel as required.
- Relay instructions to originator of emergency call as required.

- Record all times, contacts, and comments.
- Block phone lines. Have an open line for emergency only.

11.6 FIRST AID / AMBULANCE

If the First Aid Attendant receives a call requesting him/her to attend to the scene of an accident, the following procedures would apply.

- Obtain all information (note and record time).
 - Who is calling
 - Exact location of the accident scene
 - How many casualties
- Request escort to meet you if unsure of location.
- Ensure you are wearing the appropriate personal protective equipment (PPE) to deal with the situation.
- Take portable hand-held radio and fanny pack with you.
- Proceed to accident scene or meet escort and proceed to accident.
- Administer first aid treatment as required.
- Direct someone to call for additional help if required (other first aid personnel on site, mine rescue team, air evacuation, etc.).
- Direct someone to get ambulance and first aid supplies as required.
- Request an ambulance driver and transport as required.

If First Aid Attendant elects to take the ambulance to the scene of the accident, he/she should:

- Establish radio contact with the caller as soon as he/she is mobile.
- Ensure emergency flashing lights are on.
- Meet with escort if required.
- Use caution when approaching the scene (watch for hazards).
- Park vehicle safely. Do not obstruct route.
- Use emergency flashing lights when leaving the accident scene.

11.7 MINE RESCUE TEAM

1. Upon being notified of an emergency situation requesting their attendance, Mine Rescue personnel will assemble at the Mine Rescue room, gather their gear, get briefed, and go to the accident scene.
2. If a means of prompt transportation is not available to any one team member, he should advise the Area Supervisor who will make arrangements for pickup.

3. Once at the accident scene the Team Captain will liaise with the Response Coordinator, assess the emergency, and perform any fire, rescue, or any other emergency response to the level of their training.
4. Mine Rescue Captain will coordinate rescue with the Safety Officer.
5. Once the emergency response is complete, the Team Captain will submit a written report to the Safety Officer.
6. The mine rescue team may be requested to assist in clean up or over haul of the emergency scene area.
7. Before returning to their regular duties, the mine rescue team will ensure all emergency supplies and equipment are put back into order and ready to go again.

12.0 MINE RESCUE PERSONNEL

UNDERGROUND			
A: Crew	B: Crew	C: Crew	D: Crew
Kieth Camilli	Francois Grenier	Jason Patey	Mike Tanasa
Andrew Doherty	Dave Hewitt	Dan Pesonen	Chevy McKay
Mike Ethelson	Dan Kenney	Bob Redstone	Brian Hollaus
John Astle	Greg Senchuk	Devin Gray	Brian Kutzy
Ernie Bouchard	Paul Monster	Byron Smale	Cory Holland
Mike Blanchette	Tanya Brown	Chris Craft	Carlo Forlin
Procon			
Chris Koebel Brian Bigattini Leland Smith	Taylor Chase Vince Atkinson Tom Williams	Gary Barnesky Eric Oullette Vince Atkinson	Pierre Labelle Dave McDonald Mike Sweeting
Trainer/Coordinator			
Donnie Tibbo, Sandy Rezansoff			

12.1 ERT PERSONNEL

SURFACE			
A: Crew	B: Crew	C: Crew	D: Crew
Kieth Cottrell	Francois Grenier	Chevy McKay	Kevan Ehman
Mike Bromilow	Dan Pesonen	Jason Ballou	Chris Laforge
Randy Freguson	Dan Kenney	Bob Redstone	Brian Hollaus
Brad Jamieson	Randy Ryan	Mike Ethelston	Kieran Trenerry
Ernie Caesar	Walter Matwee	Rob Thomson	Brian Kutzy Sr.
Dave Adam	Carlo Forlin	Roy Mervyn	Chris Koebel
Nathan Titus	Mike Korte	Boyd Preston	
Trainer/Coordinator			
Donnie Tibbo, Sandy Rezansoff			

13.0 EVACUATION PROCEDURES

13.1 ASSEMBLY AREAS

In an emergency situation, the Employee Tally is of the utmost importance. The Administration Office will be the main **Assembly Area** with employees mustering on the east side of the building. Signs posted in the Assembly Area indicate where the employees from each work area shall assemble for the Employee Tally. As soon as workers have arrived at the Assembly Area the Employee Tally described in Section 9.0 shall commence. No individual shall leave the assembly area unless given permission by the Response Coordinator or designate.

Due to the relatively large distance between the Tailings Containment Area and the Administration office, a secondary Assembly Area is designated at the carpenters shop and the recreation center

General Provisions

- Evacuation will follow any emergency that is beyond the control of the immediate personnel. Such situations would include:
 - Release of poisonous, flammable, or explosive gas.
 - Fire.
 - Flammable or poisonous liquid spill.
 - Structural or ground failure.

- An alarm of unknown origin.
- All personnel will immediately evacuate to their designated assembly areas.
- Each Area Supervisor or designate is responsible to conduct the Employee Tally as soon as possible after the evacuation call.

13.2 TAILINGS DISPOSAL AREA

- Evacuation of the tailings disposal area will be initiated by the Fire Alarm system, radio, or local phone system.
- All personnel will immediately leave the area and meet at the designated Assembly Area.
- No one will leave the Assembly Area unless instructed to do so by the Area Supervisor.
- If anyone is unaccounted for, the Response Coordinator will be contacted by the Area Supervisor responsible for the person (or the Safety Officer in the case of non-NATCL personnel) and a search will be initiated as soon as possible.
- No one shall re-enter the mill building or TSF until clearance is given by the Response Coordinator.

14.0 FIRE PROCEDURES

The person discovering any fire will initiate the alarm by calling out in a loud voice, activating the fire alarm, activating plant siren, using the radio, phone, or other systems as appropriate to alert all personnel in the immediate area. Once all personnel at risk are alerted to the fire, the Reporting Station should be immediately notified of the situation.

An attempt to control the fire may be made if it can be done without risk of personal injury. All personnel working in the mill and the TSF shall be trained in the use of portable fire extinguishers.

- Sound the alarm – call out in a loud voice “fire” and activate the nearest fire alarm system.
- Report the emergency to the Reporting Station. If an attempt to control the fire is to be made, the Reporting Station must be notified. In this situation, the emergency response may not be activated unless requested by the caller or the Reporting Station loses contact with the caller.
- Look for any possible electrical hazard. Isolate if necessary.
- Ensure any source or line containing flammable or explosive gas is shut off.
- Call for additional help if required.
- Attempt to control the fire with portable fire extinguishers or fire hoses only if it is safe to do so. Respondents must always ensure that a safe retreat path is maintained in the event the fire gets out of control.
- If evacuating the area, ensure all windows and doors are closed (if time and safety permits). Proceed to the Assembly Area.

- Once the fire has been put out, inspect the area carefully for smouldering materials and check that the fire has not spread unnoticed to adjacent walls or rooms.
- If it is required, a “fire watch” will be posted for several hours to monitor the area for re-ignition of the fire.

15.0 TAILINGS BREACH EMERGENCY PROCEDURE

The uncontrolled release of tailings poses serious risks to the surrounding environment. Breaches of the containment area include, but are not limited to, seepage through embankments or structures in the TSF, the rupture or leaking of any tailings transport line, or flow of water or tailings over the top of any structure. The reporting of these incidents involves some degree of discretion as not every leak or incident of seepage may constitute an emergency. It must be understood, however, that even small leaks or incidents of seepage can rapidly deteriorate and must therefore be taken seriously.

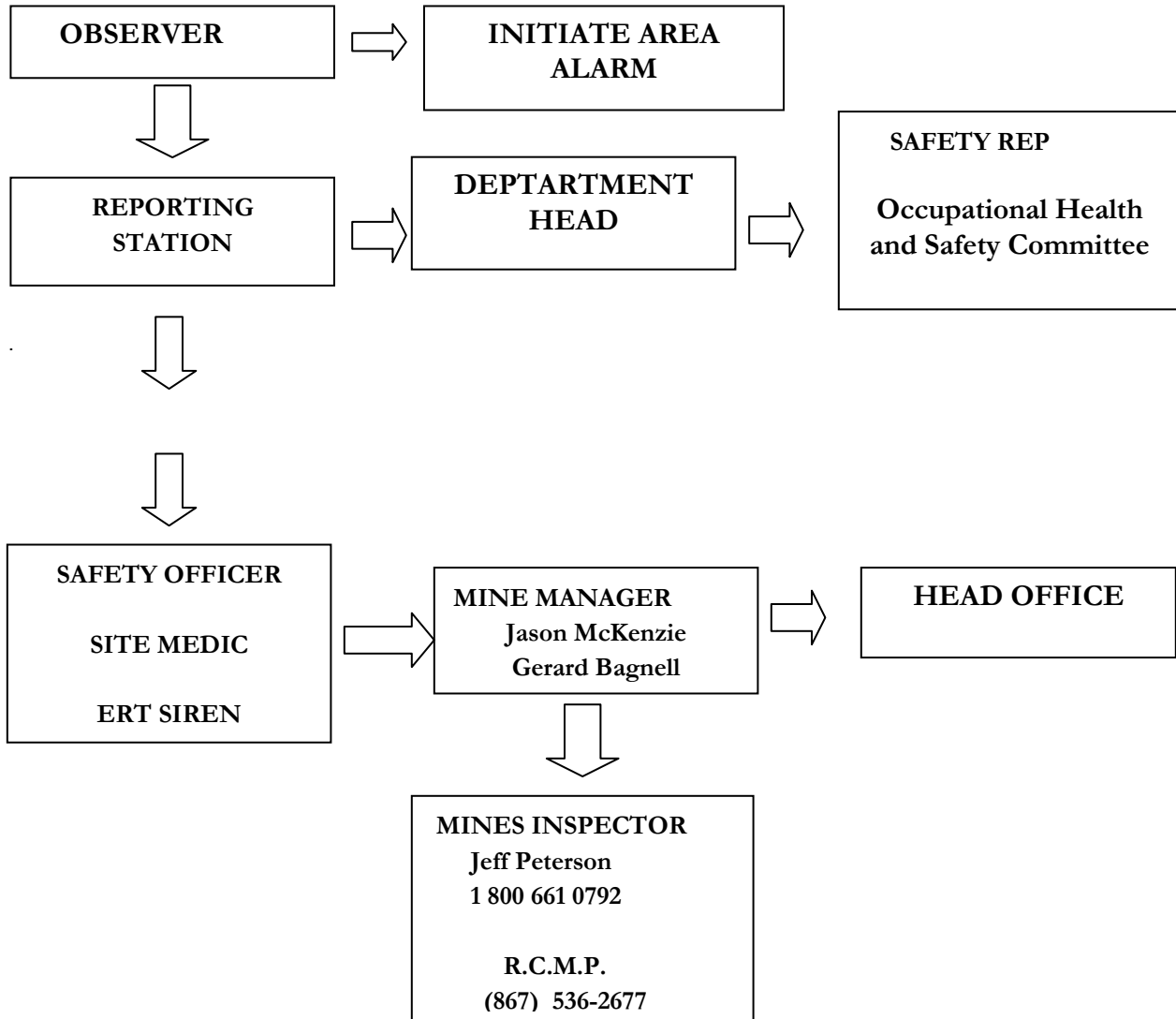
- Anyone discovering tailings breach shall immediately report the situation to the Reporting Station. The caller shall provide an indication of the severity of the situation and indicate if any immediate measures can be taken to control the situation.
- If it is safe to do so, the caller may take action to control the situation, such as shutting off tailings pumps or placing barriers to control the flow of tailings.
- The Reporting Station shall inform the Response Coordinator who shall report to the site of the breach and make the necessary equipment arrangements to halt the flow of tailings and to prevent the migration of material that is outside the TSF.
- Once the release is contained, the situation should be well documented and the appropriate regulatory agencies informed of the situation prior to any cleanup activities.
- If the tailings release was caused by significant seepage through a structure or by the flow of water over the top of a structure, a qualified engineer must be brought to site as soon as possible to inspect the situation and provide an assessment of the integrity of the structure.

16.0 VEHICLE ACCIDENT EMERGENCY PROCEDURE

The presence of steep inclines and open water increases the risks associated with operating a vehicle in the TSF. All vehicle accidents must therefore be considered a severe incident.

- Anyone discovering a vehicle accident in the TSF shall immediately report the situation to the Reporting Station.
- Because the chances of human injury are high, the Reporting Station should immediately activate the Code 1 Emergency Protocol. The Reporting Station must then inform the Response Coordinator, Mine Rescue Team, and ambulance if required.
- The caller should assess the situation and, if safe to do so, respond with First Aid or portable fire extinguishers, if necessary, until relieved by the Response Team. Where possible, communication should be maintained with the Reporting Station.

17.0 EMERGENCY RESPONSE FLOWCHART



19.0 OFF-SITE CONTACT NUMBERS

Contact	Number	Comment
WATSON LAKE		
Ambulance	867 536 4444	
Hospital	867 536 4444	
Doctor	867 536 2565	
RCMP	867 536 2677	
RCMP – emergency	867 536 5555	
Fire Department	867 536 7442	
Fire Department - Emergency	867 536 2222	
Report Forest Fire	1 888 798 3473	
Health Center	867 536 7483	
Horizon Helicopters	Ph 867 633 6044 Cell 867 334 7550	Cole Hodinski
Provincial Emergency Program	1 800 663 3456	
WHITEHORSE		
Air Medivac – EMS Dispatch	867 667 3333	
Hospital	867 393 8700	
Alkan Air	867 668 2107	
Poison Control Center	867 668 8497	
Chemical Emergency	867 663 3456	
Wolverine Mine	604-630-2114	
Diavik Mine site	1 867-766-5400	
Breakwater (Myra Falls)	1 250-287 9271	

19.1 CANTUNG PERSONNEL

TITLE	NAME	BUSINESS PHONE	CELL	FAX
President/CEO	Steve Leahy	604 684-5300	604 729 4573	604 684 2992
CFO	Harold Schwenk	604 684 5300		604 684 2992
COO		604 684 5300		
G.M.	Jason McKenzie	604 759 0913		604 759 0918
Asst G.M.	Gerard Bagnell	604 759 0913		604 759 0918
Mill Supt.	Alan McDonald	604 759 0913		604 759 0918
Ass't Mill Supt.	Colin Craft	604 759 0913		604 759 0918
Mill Shift Supervisor	Dave Page/Kerry Harford/Kevin Craft/Chuck Auger	604 759 0913		604 759 0918
Mine Supt.	Steve Sherwood	604 759 0913		604 759 0918
General Mine Forman	Ernie Bouchard	604 759 0913		604 759 0918
Mine Shifters	Gregg Senchuk/Martin Rosell/John Astle/Dan Lefebvre	604 759 0913		604 759 0918
Maint. Supt.	Brian Harvey/Jon MacCurdy	604 759 0913		604 759 0918
Electrical Supervisor	Randy Ryan/Mark Ebanol	604 759 0913		604 759 0918
Surface Foreman	Al Glada/Randy Ferguson	604 759 0913		604 759 0918
Safety Officer	Donnie Tibbo, Sandy Rezansoff	604 759 0913		604 759 0918
First Aid	Donny Tibbo/Sandy Rezansoff	604 759 0913		604 759 0918
Mill Maintenance	Lloyd Thomas Dwayne VonDoerhen	604 759 0913		604 759 0918
Admin/HR	Jenny Penner/Janet Wastell	604 759 0913		604 759 0918
Environment.	Doug Watt/Chris Werbicki/Laura Smithies Dave Desmarais	604 759 0913		604 759 0918

TITLE	NAME	BUSINESS PHONE	CELL	FAX
Metallurgist	Jen Parry	604 759 0913		604 759 0918
Warehouse	Lil Schindel/Cory Lermo	604 759 0913		604 759 0918
MineEngineer		604 759 0913		604 759 0918
Geologist	Mikhail Kamionko/Rob Boyce	604 759 0913		604 759 0918

20.0 AIR MEDICAL EVACUATION

The following procedure is to be followed when calling for a medical air evacuation.

20.1 INITIATING A MEDIVAC

1. Phone Yukon EMS Dispatch 867 667 3333

- This number will put you in contact with the Whitehorse dispatcher. Be prepared to reassure the Dispatcher that Tungsten, NWT, is handled from Whitehorse.

2. This is the information to give to the dispatcher

- Patient's name
- Age
- Date of birth
- Nature of illness or injury
- Health Care Number – Indicate to Dispatcher that Cantung Mine has a common billing number for its employees

3. You will be passed to the Medivac Nurse. You must provide:

- Nature of illness or injury
- Signs and symptoms
- Medical history (if possible)
- Blood pressure (if possible)

4. Start or fill out an Emergency Communications Log Form

- Record date and time of all calls
- Who call was to or from
- Information given or taken
- Phone numbers

5. Ensure that you leave Dispatch with phone numbers and contact name(s) so calls may be returned to the mine site correctly.

20.2 MEDICAL EVACUATION BACKGROUND

Information tips

The more information that you can give during the initial phone call, the better EMS services can assess the situation and provide proper staffing and equipment for the medivac. Once the medivac has been initiated, you should be prepared to call back to the medivac nurse if the patient's condition changes significantly.

Calling Alkan to arrange a medivac directly will not speed up the process. Alkan provides the plane, but it is dispatched by EMS services. There will be contact with Alkan to confirm weather and airstrip conditions, but this will occur after the Dispatcher initiates a medivac.

There is a medivac aircraft for the Yukon and calls for a medivac will be prioritized based on the EMS assessment of first need.

Cantung Medivac Options

There are a number of choices for medical evacuation from the Cantung site. In all cases beyond sending someone out, in a non-life-threatening situation, in a company vehicle for follow up or treatment in Watson Lake, the Yukon EMS should be involved in the arrangements.

The general guide for evacuation is that if the condition is serious, the first choice is evacuation by air. But, Yukon EMS will evaluate our patient's needs and consider the immediate situation in the Yukon as equipment will not always be in place to service our needs first.

For medical evacuation the order of preference is:

- Medivac aircraft to Whitehorse
- Charter fixed-wing flight to Whitehorse
- Helicopter to Watson Lake
- Ambulance to Watson Lake

In every case the choice of evacuation will include consideration of:

- Patient's injuries and condition
- Site weather (is flying even possible)
- Daylight conditions
- Availability of equipment for medical evacuation.

21.0 CLOSURE

We trust this report meets your present requirements. Should you have any questions or comments, please contact the undersigned at your convenience.