



**DE BEERS**  
CANADA  
SNAP LAKE MINE

May 1, 2009

sent by: email  
File: L020

Willard Hagen, Chair  
Mackenzie Valley Land and Water Board  
PO Box 2130  
Yellowknife NT X1A 2P6

**Mackenzie Valley Land  
& Water Board**

**File**

MAY 05 2009

**Application #** MY2001L2-0002  
**Copied To** JAREg

Dear Mr. Hagen:

**Re: Construction of an Ammonium Nitrate Storage Facility**

De Beers is pleased to present to the Mackenzie Valley Land and Water Board an AN Storage Building Engineering Design signed and stamped by a professional engineer registered to practice in the Northwest Territories in accordance with the *Engineering and Geoscience Professions Act, S.N.W.T. 2006 c. 16* (please see attachment).

After reviewing various Ammonium Nitrate containment options, De Beers chose the attached design. This design is consistent with storage commitments made during the Environmental Assessment of the Snap Lake Diamond Mine. The design incorporates a closed-in structure with a concrete floor and concrete bunker walls.

As a condition of the MVLWB approval for "extended temporary storage of Ammonia Nitrate" letter dated April 8<sup>th</sup>, 2009, De Beers is required to further discuss the strategy for the storage of ammonia nitrate material in a meeting with the Snap Lake Working Group.

Since the building design has been completed De Beers is requesting an audience with the MVLWB and members of the Snap Lake Working Group to seek feedback and recommendations concerning mitigation measures external to the containment structure. De Beers is developing handling strategies to respond to ammonia spills and in-situ emergency response measures that apply specifically to the proposed AN Storage location. This will include prospective monitoring stations, clean up methods and run off containment.

In a letter from Department of Indian Affairs Land Administration, De Beers Snap Lake is required to gain approval of this storage location from the MLVWB prior to August 31, 2009. This is necessary in order to achieve a lease through the INAC Lands Administration process.

.../2





Willard Hagen  
Page 2 of 2  
May 1, 2009

De Beers is therefore requesting MVLWB approval of the proposed Snap Lake Ammonia Nitrate Storage building design.

If you require further information, please do not hesitate to contact me at 867-767-8522 or email [brad.corrigan@ca.debeersgroup.com](mailto:brad.corrigan@ca.debeersgroup.com).

Yours truly,

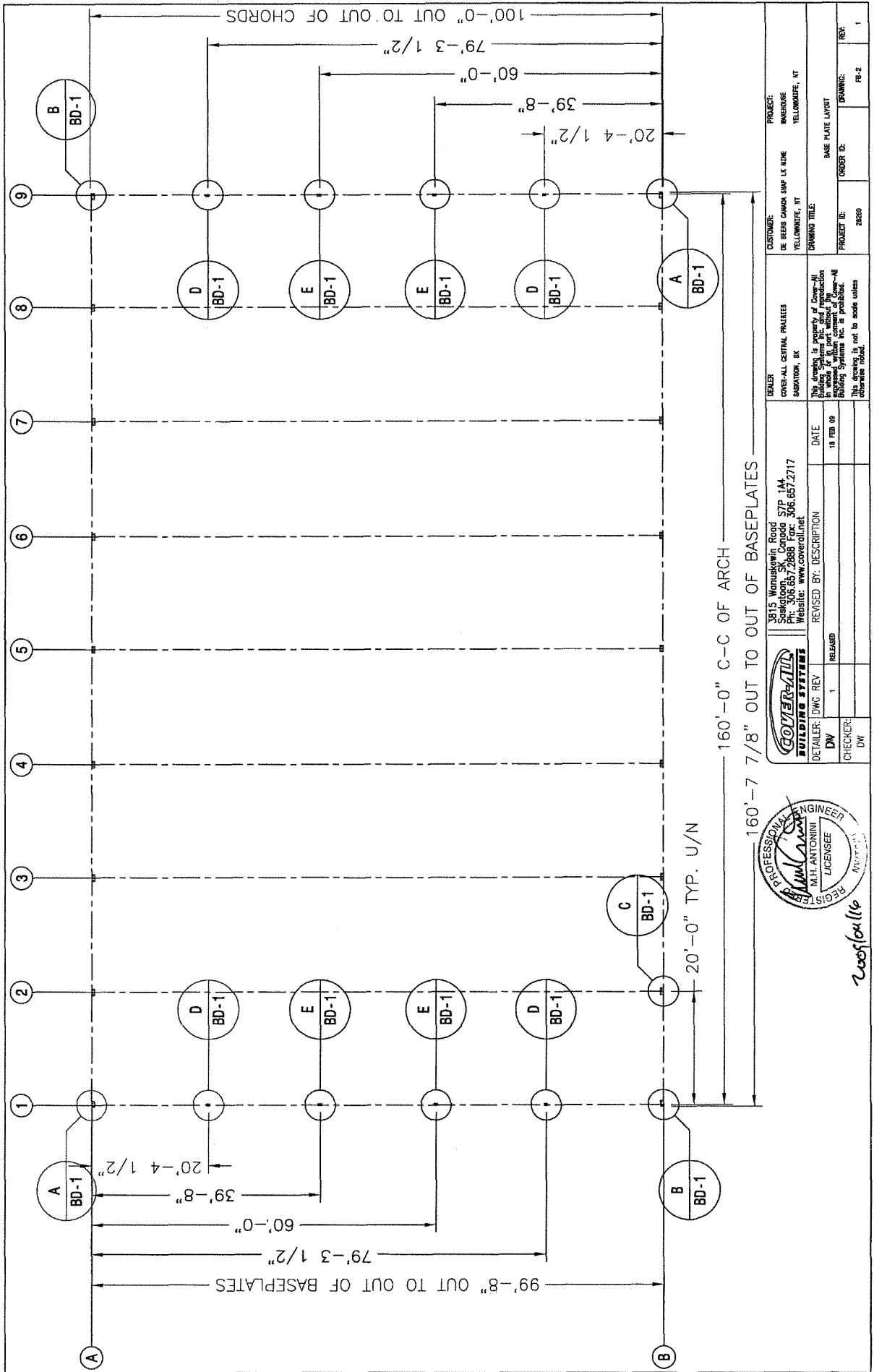
A handwritten signature in black ink, appearing to read "BC", is written over a horizontal line.

Brad Corrigan  
Mine General Manager  
Snap Lake Mine

Attachments

cc: Chantal Lavoie, Chief Operating Officer, DBC  
Dee McCallum, SHE Manager, DBC  
Annette Hopkins, Director of Operations, INAC  
Sandra Bradbury, Senior Land Specialist, INAC  
Jason Ash, Regulatory Officer, MVLWB





DEALER COVER-ALL CENTRAL PAINTS BOSTON, MA	CUSTOMER DE BEERS CANON SAND LK MINE YELLOWROCK, NY
PROJECT: BASE PLATE LAYOUT	
DRAWING TITLE	
PROJECT ID: 28260	ORDER ID: FB-2
DATE: 18 FEB 09	REV: 1

3815 Waukesha Road  
Stoughton, MA 01974  
Ph: 306.657.2888 Fax: 306.657.2717  
Website: www.coverall.net

REVISIONS:

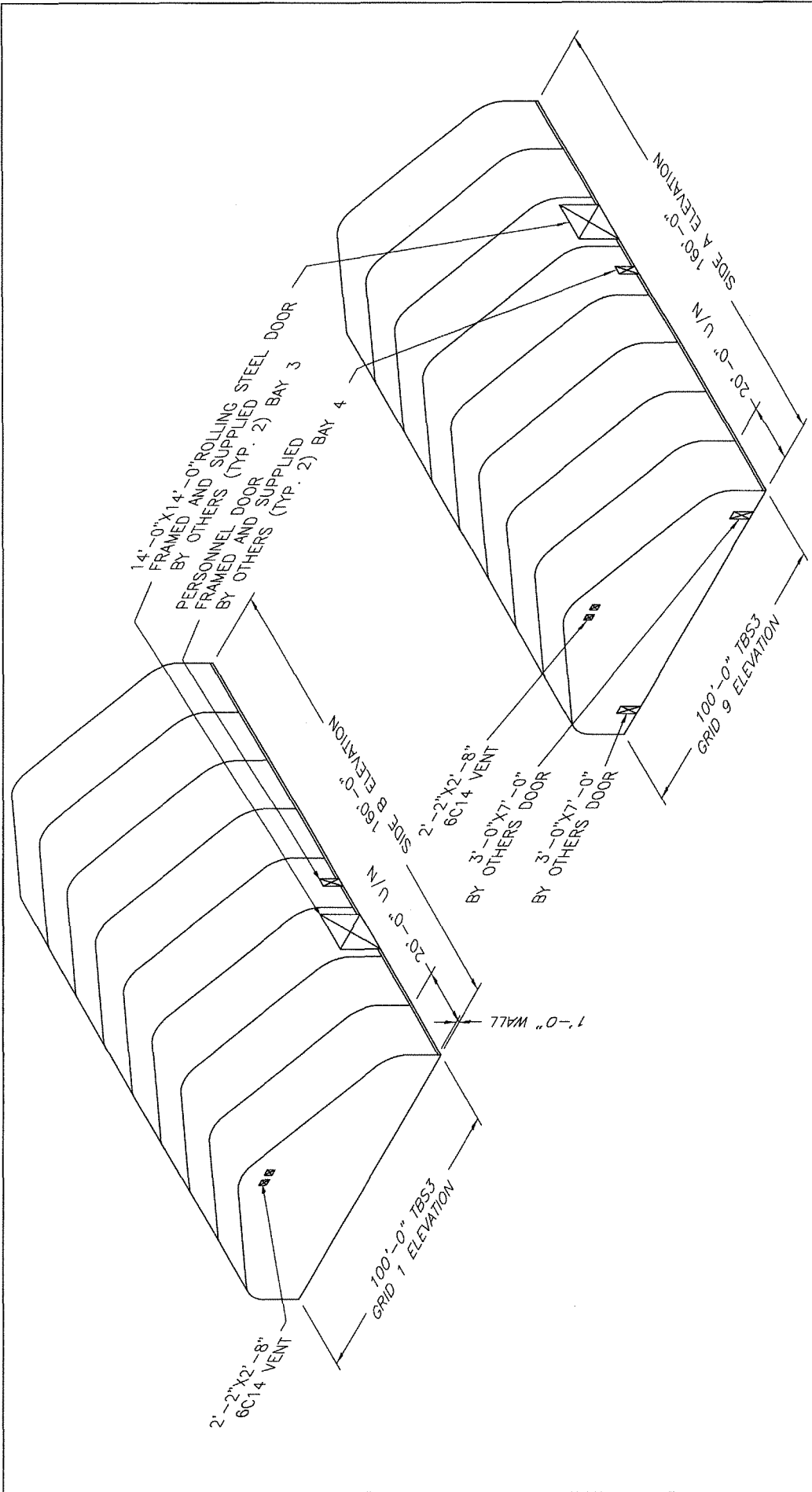
NO.	DATE	DESCRIPTION
1 <td>18 FEB 09 <td>RELEASED</td> </td>	18 FEB 09 <td>RELEASED</td>	RELEASED

DETAILER: DWG REV: 1  
CHECKER: DW

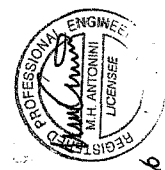
**COVER-ALL BUILDING SYSTEMS**

REGISTERED PROFESSIONAL ENGINEER  
M.H. ANTONINI  
LICENSEE  
No. 104116

This drawing is the property of Cover-All Building Systems Inc. and reproduction in any form without the written consent of Cover-All Building Systems Inc. is prohibited. This drawing is not to scale unless otherwise noted.



ALL BAYS ARE: FR WHITE - 4mil UNLESS NOTED  
 THIS BUILDING HAS PVC EXTRUSION TRUSS SEAL SYSTEM  
 Endwall 1: HSS and Fabric FR WHITE - 4mil  
 Endwall 2: HSS and Fabric FR WHITE - 4mil  
 PLEASE REFER TO FOLLOWING DRAWINGS  
 FOR EXACT BUILDING DIMENSIONS



2/25/09 (16)

**COVER-ALL BUILDING SYSTEMS**  
 3815 Womelswin Road STP 1A  
 Suwannee County, FL 32085  
 Ph: 306.657.2888 Fax: 306.657.2717  
 Website: www.coverall.net

REVISOR: DWG REV 1 18 FEB 09  
 CHECKER: DW

DEALER: COVER-ALL CENTRAL PARTNERS  
 SUWANNEE, FL

PROJECT: DE BEERS CANADA SHOP 'A' WARE  
 WAREHOUSE  
 YELLOWROUSE, FL

DRAWING TITLE: PROJECT LAYOUT

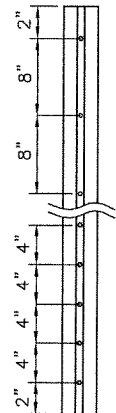
PROJECT ID: 28280  
 ORDER ID: FR-3  
 REV: 1

This drawing is property of Cover-All Building Systems Inc. and reproduction without the written consent of Cover-All Building Systems Inc. is prohibited. This drawing is not to scale unless otherwise noted.

MARK#	QTY	LENGTH	WEIGHT
V3	2	102"	100
R3	2	184"	220
S3	2	215"	195
W3	4	146"	132
T3	1	184"	218

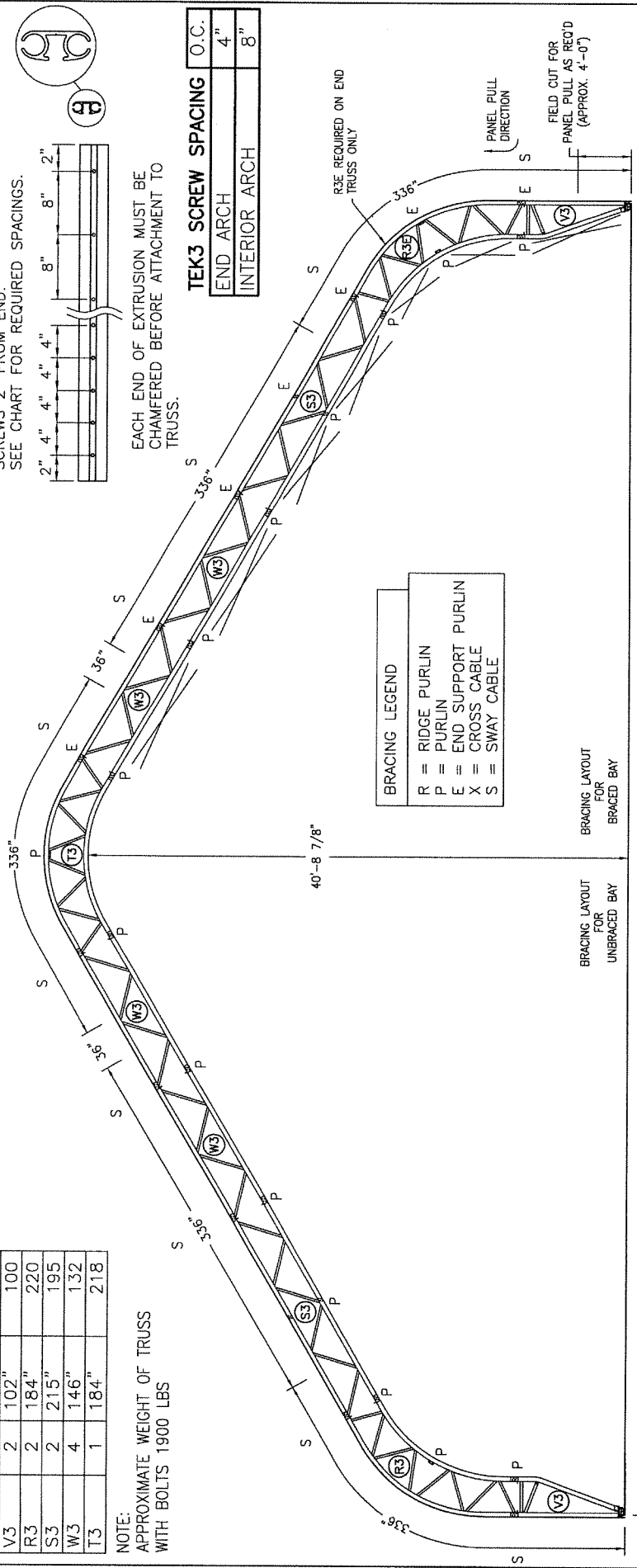
NOTE:  
APPROXIMATE WEIGHT OF TRUSS  
WITH BOLTS 1900 LBS

USE TEK3 X 1 1/4" SELF DRILLING  
SCREWS 2" FROM END.  
SEE CHART FOR REQUIRED SPACINGS.



EACH END OF EXTRUSION MUST BE  
CHAMFERED BEFORE ATTACHMENT TO  
TRUSS.

TEK3 SCREW SPACING	O.C.
END ARCH	4"
INTERIOR ARCH	8"



BRACING LEGEND	
R	= RIDGE PURLIN
P	= PURLIN
E	= END SUPPORT PURLIN
X	= CROSS CABLE
S	= SWAY CABLE

BRACING LAYOUT FOR UNBRACED BAY

BRACING LAYOUT FOR BRACED BAY

99'-8" 0-0 OF BASEPLATES

ITEM #	QTY	LENGTH	WEIGHT
V3	2	102"	100
R3	2	184"	220
S3	2	215"	195
W3	4	146"	132
T3	1	184"	218

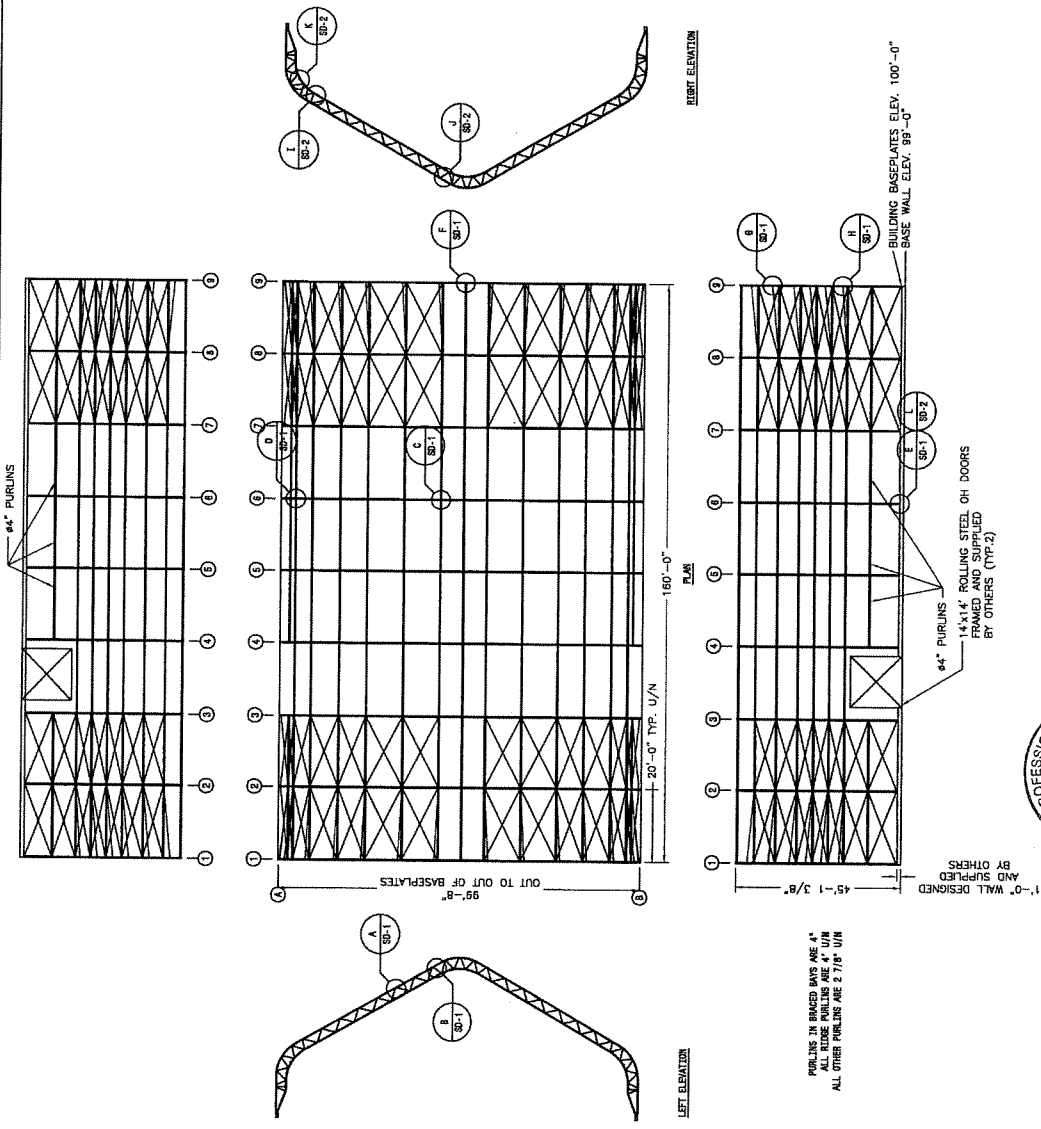


3815 Waukesha Road  
Spartanburg, South Carolina 29576  
Phone: 803.537.2988  
Website: www.covertilt.net

DEALER: OVER-ALL CENTRAL PARTIERS  
SARASOTA, FL

PROJECT: GE BEERS GAMMA BAY LX MINE  
YELLOWRISE, MT

ORDER ID: 18300  
DRAWING: FR-4  
REV: 1



PURLINS IN BRACED BAYS ARE 4"  
 ALL RISE PURLINS ARE 4" U/N  
 ALL OTHER PURLINS ARE 2 7/8" U/N



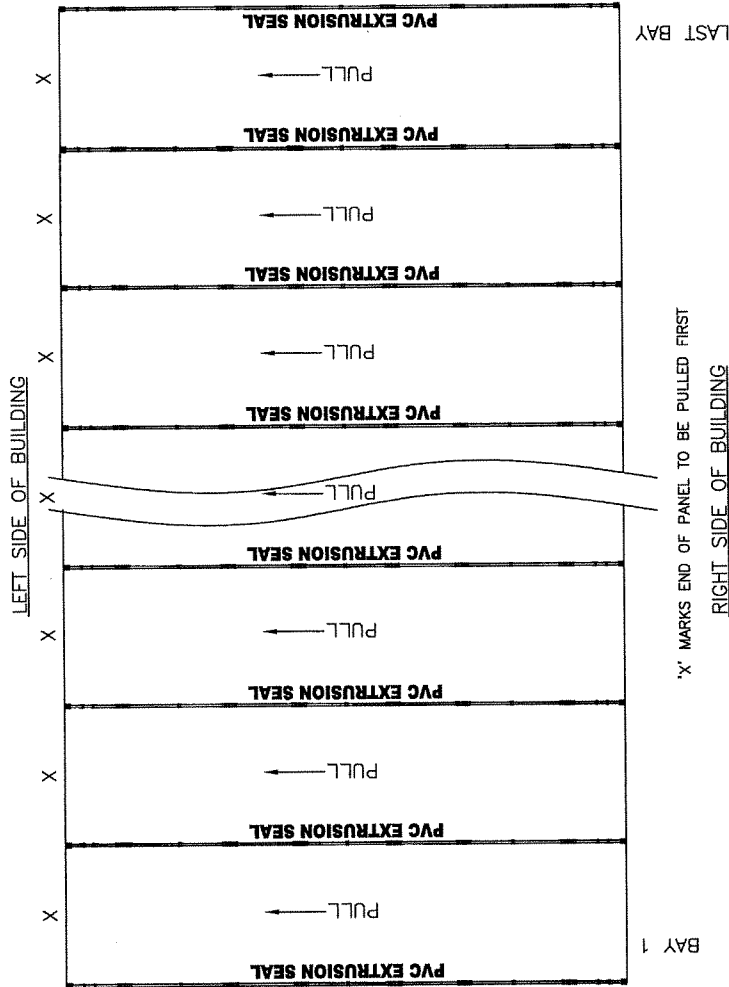
*2008/02/16*

		3015 Wonuskewin Road Springfield, MA 01104 Phone: 413-778-7288 Website: www.coverall.net		3015 Wonuskewin Road Springfield, MA 01104 Phone: 413-778-7288 Website: www.coverall.net	3015 Wonuskewin Road Springfield, MA 01104 Phone: 413-778-7288 Website: www.coverall.net
DW 1 RELEASED	DWG 1 REVISED BY: DESCRIPTION	DATE 18 FEB 09	CHECKER: DW	DEWELER COVER-ALL CENTRAL PARTNERS SAKATON, BK	CUSTOMER: DE BEERS CANADA SNAP LK MIRE YELLOWKUF, NY
PROJECT TITLE: BRACING LAYOUT			ORDER ID: 25200	DRAWING: FR-5	REV: 1

This drawing is the property of Cover-All Building Systems Inc. It is to be used in whole or in part without the written consent of Cover-All Building Systems Inc. is prohibited. This drawing is not to scale unless otherwise noted.

**NOTE:**  
 IF YOU MUST PULL OPPOSITE OF SHOWN, YOU NEED TO RE-FOLD FABRIC  
 TO GAIN ACCESS TO TOP PULL POCKETS. (WITHOUT THE X MARKS)

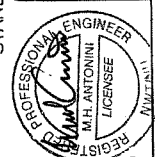
**IMPORTANT:**  
 BAY 1 IS ALWAYS BAY 1, NO MATTER WHICH DIRECTION YOU NEED TO PULL.



PVC EXTRUSION SEAL



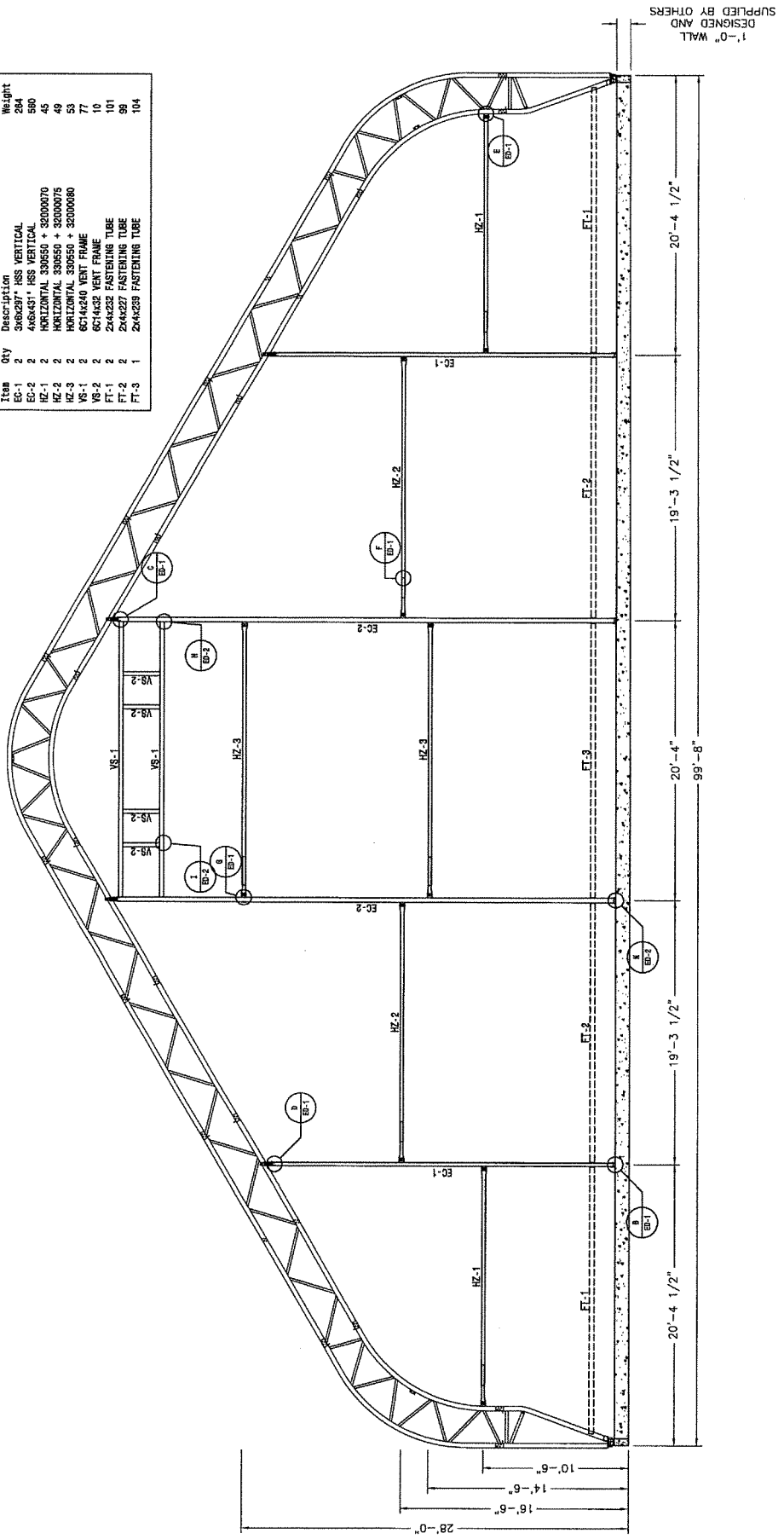
STANDARD FABRIC ORIENTATION



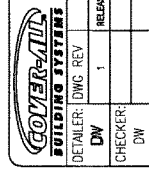
205102116

SEALER: COVER-ALL CENTRAL PROFILES SPOONTON, SC		CUSTOMER: DE BEERS CANADA BAMP LX MIKE YELLOWKIFE, NT		PROJECT: WAREHOUSE YELLOWKIFE, NT	
3815 Woodsworth Road Scarborough, Ontario M1V 5K7 Ph: 306.657.2688 Fax: 306.657.2717 Website: www.coverall.net		DRAWING TITLE: FABRIC DETAILS		ORDER ID: 26380	
DATE: 18 FEB 09		PROJECT ID: 26380		REV: 1	
DETAILER: DWG. REV. 1		REVISIONS:		DRAWINGS: FR-4	
CHECKER: DW		REVISIONS:		REV: 1	

Item	Qty	Description	Weight
28A	2	3X60C21 HS VERTICAL	28A
28B	2	3X60C21 HS VERTICAL	28B
28C	2	3X60C21 HS VERTICAL	28C
28D	2	3X60C21 HS VERTICAL	28D
28E	2	HORIZONTAL 330550 + 32000070	49
28F	2	HORIZONTAL 330550 + 32000075	49
28G	2	HORIZONTAL 330550 + 32000080	53
28H	2	HORIZONTAL 330550 + 32000085	57
28I	2	6C14X24 VENT FRAME	10
28J	2	6C14X30 VENT FRAME	10
28K	2	2X4X23 FASTENING TUBE	98
28L	2	2X4X23 FASTENING TUBE	98
28M	1	2X4X23B FASTENING TUBE	104



*2/20/01/10*



3815 Mansuetin Road, Ste 1A  
 Phone: 306.657.2688 Fax: 306.657.2717  
 Website: www.coverall.net

DEALER: COVER-ALL CENTRAL PRATIVES, SAKAMOTO, IL  
 PROJECT: DE BEER CANOA AMP LY HOME, YELLOWKITE, NY  
 DRAWING TITLE: EBNALL 1  
 ORDER ID: 28280  
 DRAWING: EN-1  
 REV: 1

DETAILER: DWG REV 1  
 CHECKER: DW  
 DATE: 18 FEB 09  
 REVISIONS BY: DESCRIPTION  
 REVISIONS BY: DESCRIPTION  
 REVISIONS BY: DESCRIPTION

1'-0" WALL  
 DESIGNED AND SUPPLIED BY OTHERS

