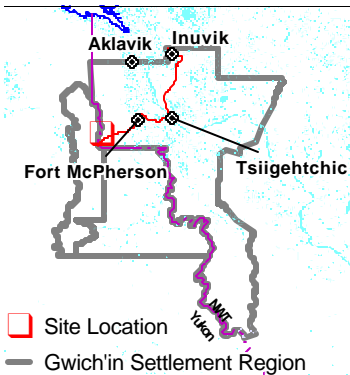


Project Description Map 1

Permit Number:
G05Q004

Activity Location:
-135.923, 67.1496



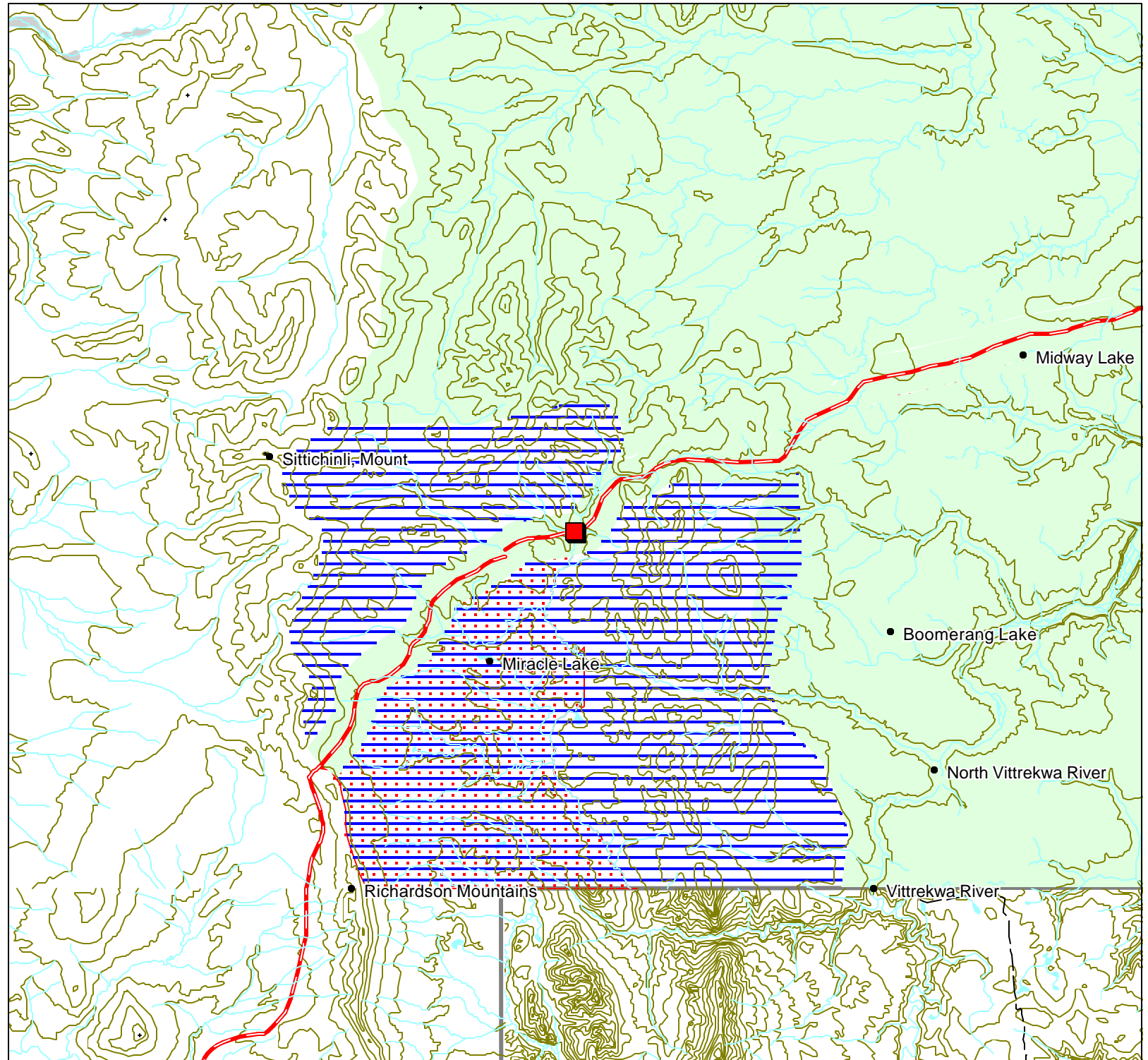
Map Scale: 1:250,000



Map Extent:
Top Left: -136.539, 67.373
Bottom Right: -135.307, 66.9262

Map Projection:
Longitude / Latitude (NAD 27 f-
or Canada)

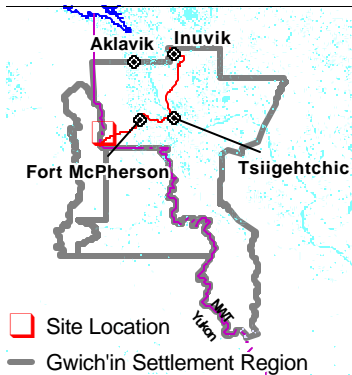
Creation Date: May 24, 2005
Modification Date: May 24, 2005



Development Activity Map 3

Permit Number:
G05Q004

Activity Location:
-135.923, 67.1496



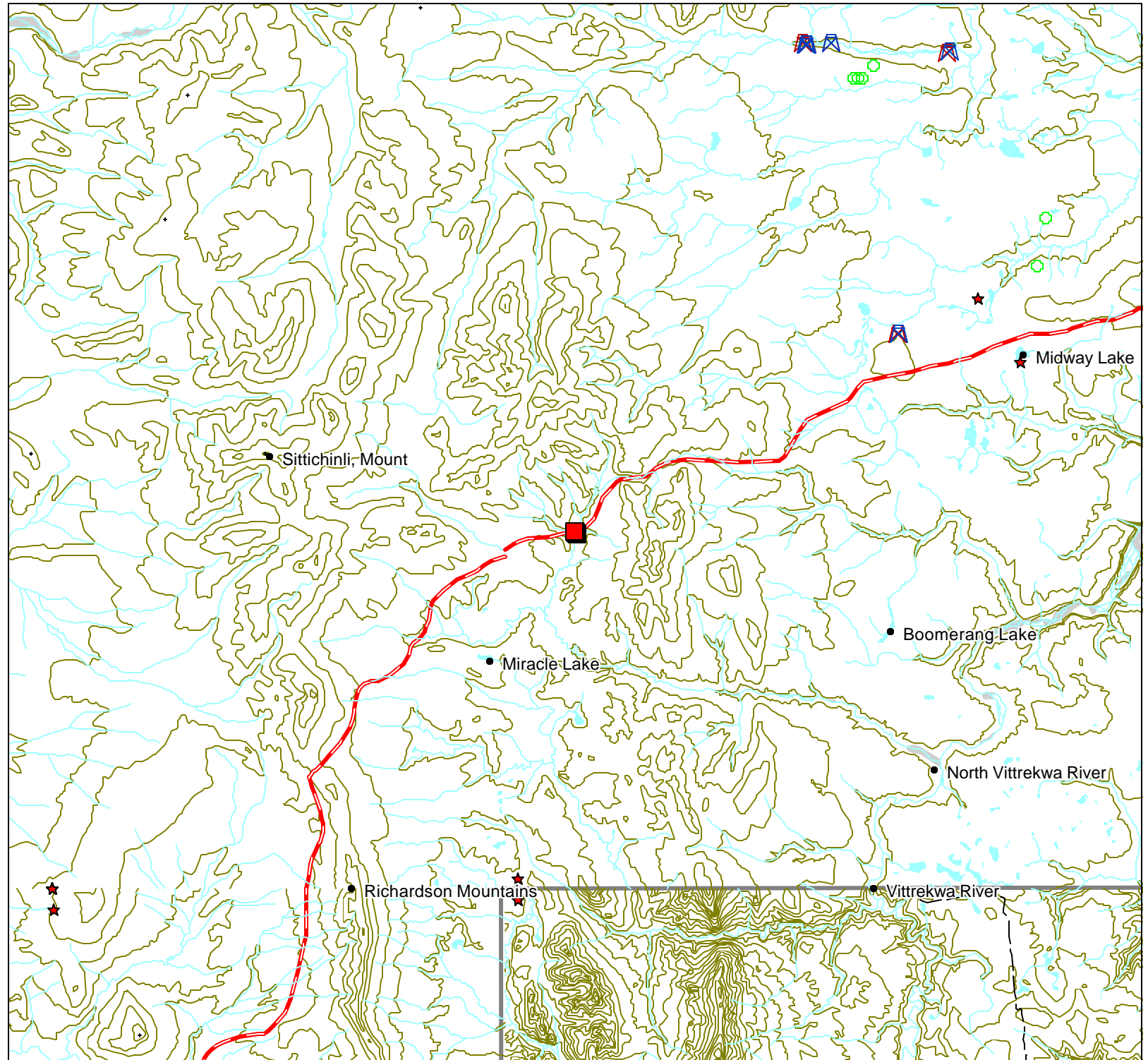
Map Scale: 1:250,000



Map Extent:
Top Left: -136.539, 67.373
Bottom Right: -135.307, 66.9262

Map Projection:
Longitude / Latitude (NAD 27 f-
or Canada)

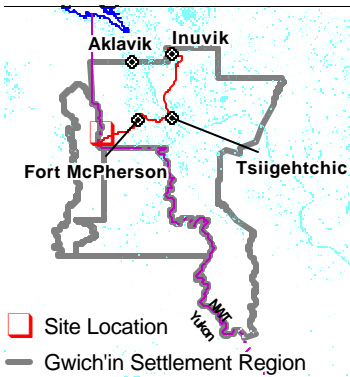
Creation Date: May 24, 2005
Modification Date: May 24, 2005



Traditional Use Map 4

Permit Number:
G05Q004

Activity Location:
-135.923, 67.1496



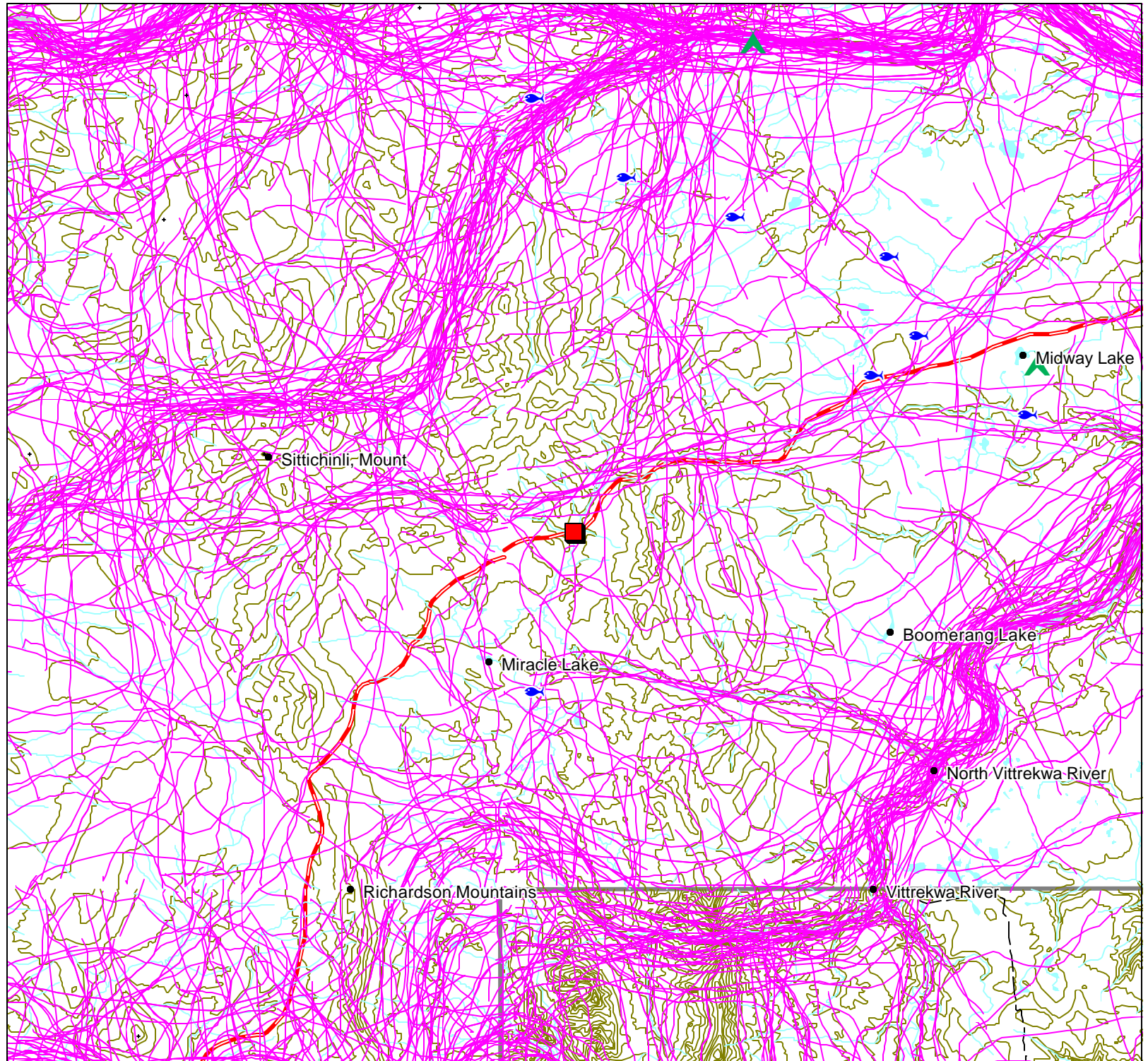
Map Scale: 1:250,000



Map Extent:
Top Left: -136.539, 67.373
Bottom Right: -135.307, 66.9262

Map Projection:
Longitude / Latitude (NAD 27 f-
or Canada)

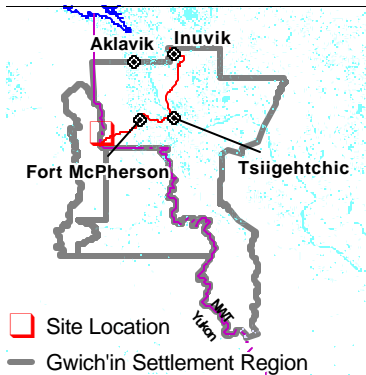
Creation Date: May 24, 2005
Modification Date: May 24, 2005



Project Description Map 1

Permit Number:
g05q004

Activity Location:
-136.02, 67.1364



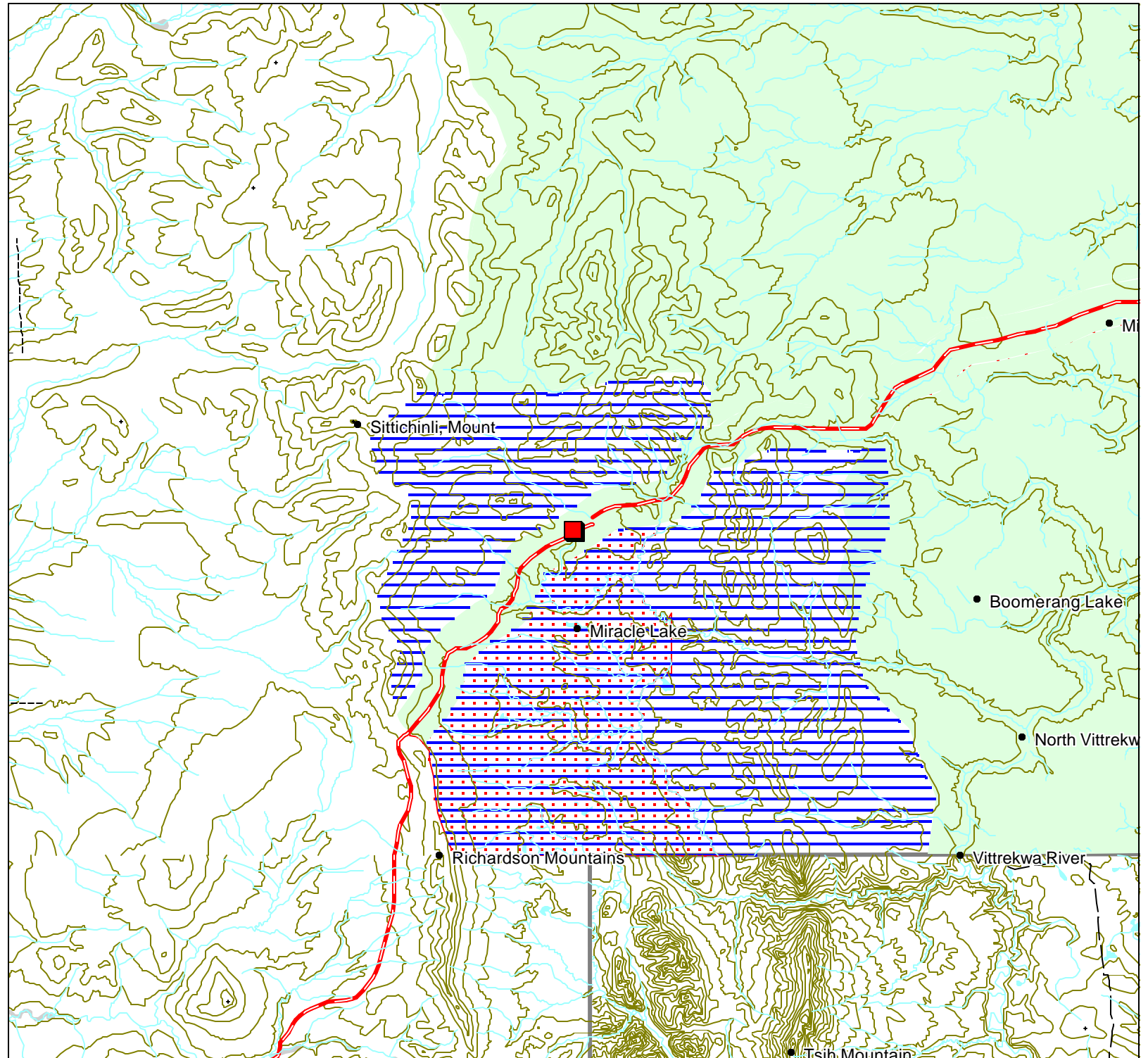
Map Scale: 1:250,000



Map Extent:
Top Left: -136.635, 67.3598
Bottom Right: -135.404, 66.913

Map Projection:
Longitude / Latitude (NAD 27 f-
or Canada)

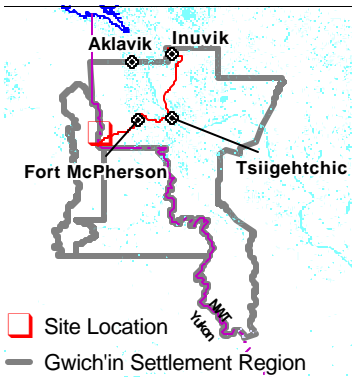
Creation Date: March 3, 2005
Modification Date: March 3, 2005



Development Activity Map 3

Permit Number:
g05q004

Activity Location:
-136.02, 67.1364



Map Scale: 1:250,000



Map Extent:
Top Left: -136.635, 67.3598
Bottom Right: -135.404, 66.913

Map Projection:
Longitude / Latitude (NAD 27 f-
or Canada)

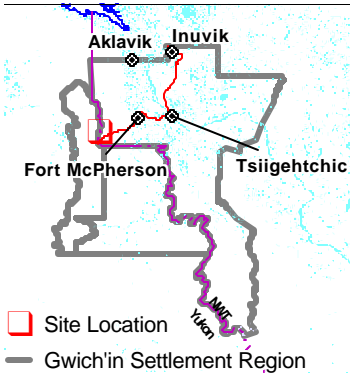
Creation Date: March 3, 2005
Modification Date: March 3, 2005



Traditional Use Map 4

Permit Number:
g05q004

Activity Location:
-136.02, 67.1364



Map Scale: 1:250,000



Map Extent:

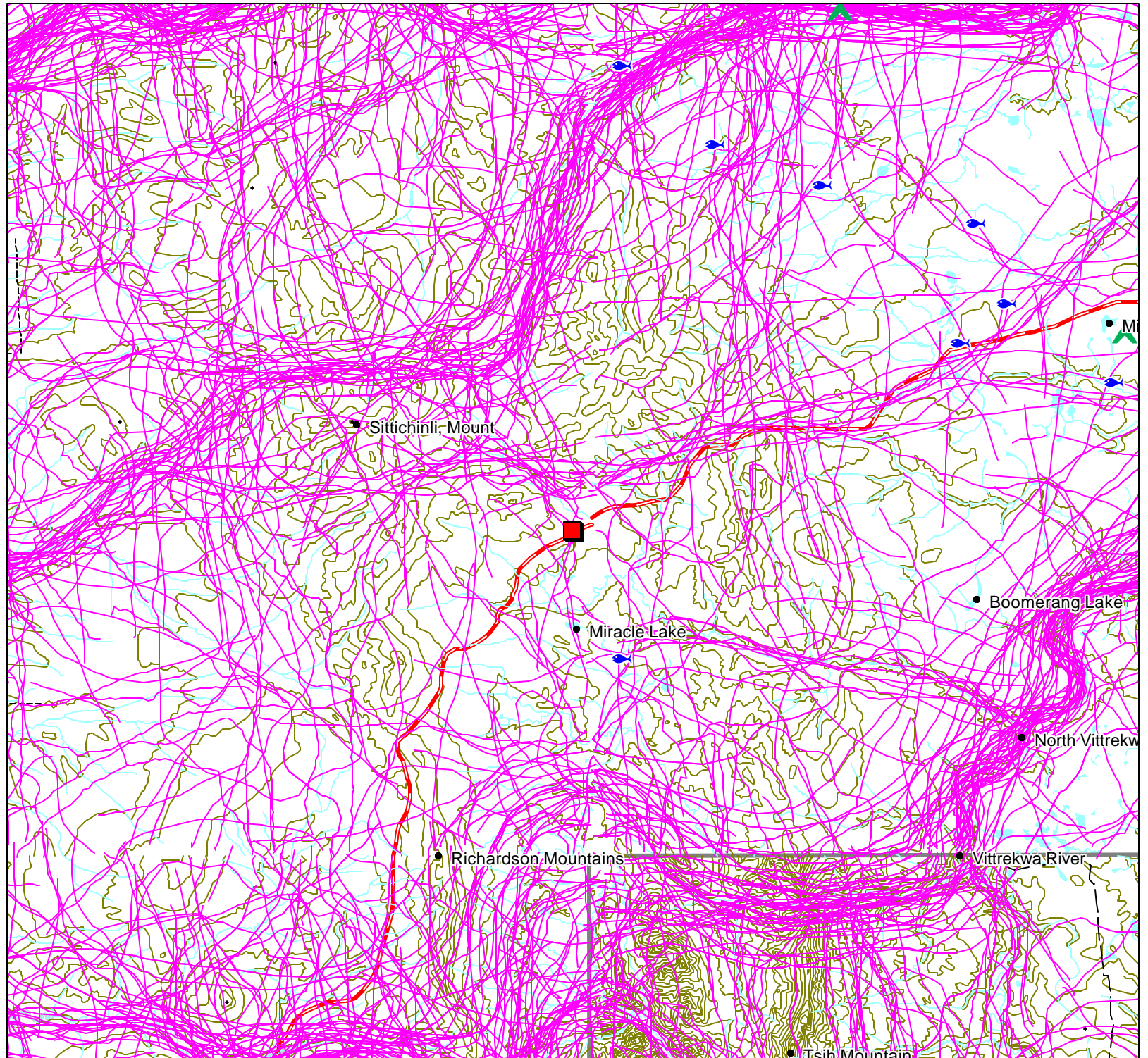
Top Left: -136.635, 67.3598
Bottom Right: -135.404, 66.913

Map Projection:

Longitude / Latitude (NAD 27 f-
or Canada)
















Creation Date: March 3, 2005





Modification Date: March 3, 2005






Permit Map Series Legend

Point Layers






-  Activity Location
-  CHIN Heritage and Archeological Sites
-  DFO Fisheries Studies
-  DIAND Boreholes Exploration
-  DIAND Licenses
-  DOT Granular Resources Inventory
-  Env Canada Stream Gauging Stations
-  GSC Mineral Showings
-  GSC Wells
-  Gwich'in Cabins
-  NTDB Contour Lines
-  NWT Mineral Showings
-  NWT Wells
-  NWT/Yukon Placename
-  Public Registry







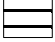

-  Rwed Cabins
-  RWED Land Permits
-  Surface disposition
-  Yukon Mineral Showings

Line Layers

-  Dempster Highway
-  Dene Traditional Trails
-  NTDB Cutlines

Region Layers

-  GLUPB Proposed Protected Areas
-  GLUPB Special Management Areas
-  Grand River Resource Blocks
-  Gwich'in Harvest Boundaries
-  Gwich'in Parcels

-  Gwich'in Territorial Park
-  Mineral lease
-  NTDB Sand/Gravel
-  NTDB Water Bodies
-  NTDB Wetlands
-  Prospect Lease 98
-  RWED Forest Inventory
-  Town Boundaries