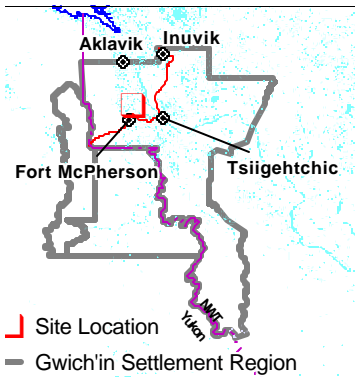


Project Description Map 1

Permit Number:
G03Q008

Activity Location:
-134.533, 67.5333



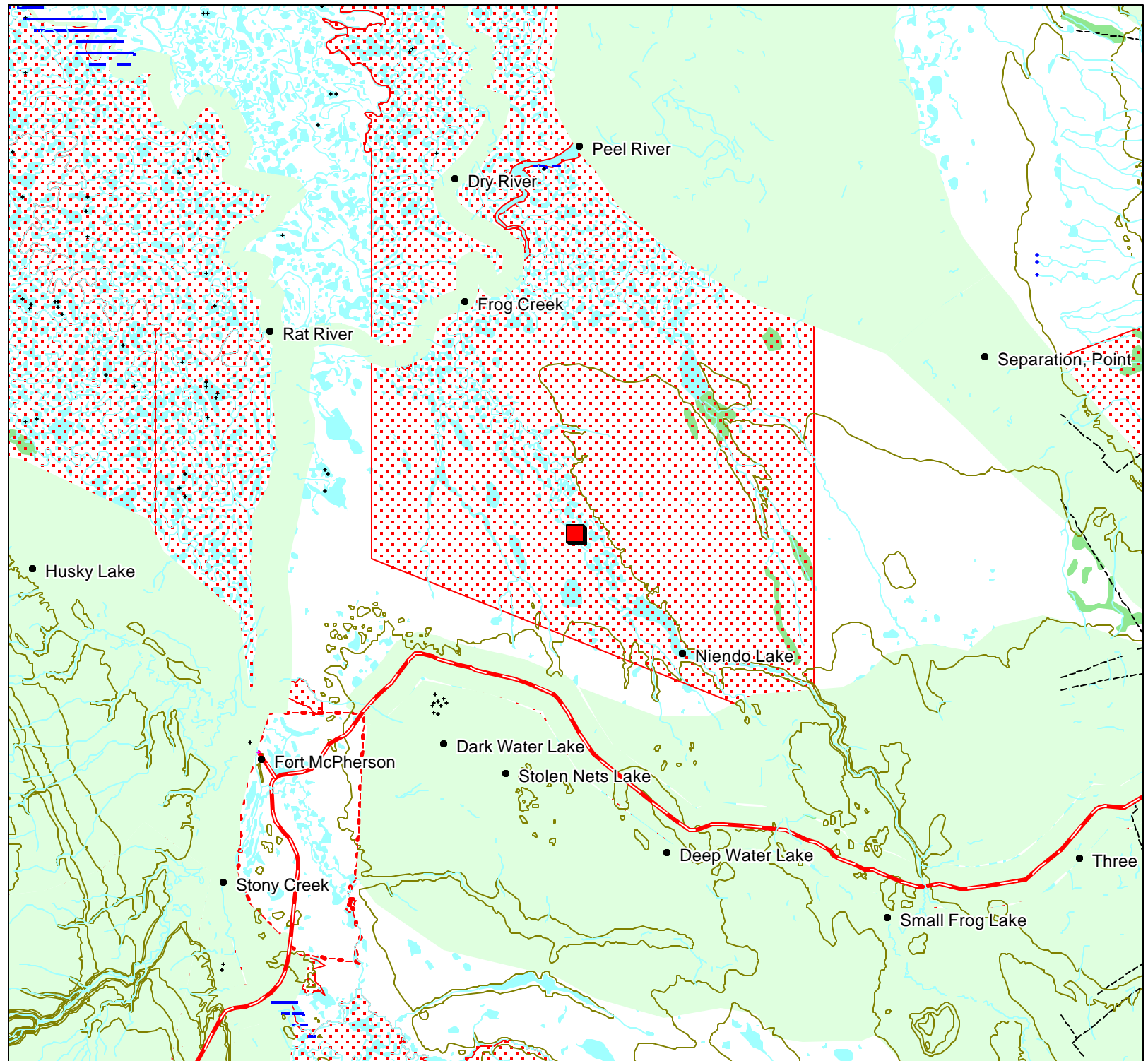
Map Scale: 1:250,000



Map Extent:
Top Left: -135.159, 67.7567
Bottom Right: -133.908, 67.3099

Map Projection:
Longitude / Latitude (NAD 27 f-
or Canada)

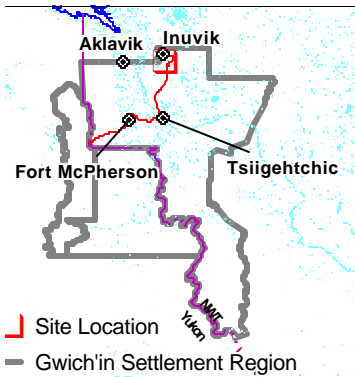
Creation Date: July 4, 2003
Modification Date: July 4, 2003



Development Activity Map 3

Permit Number:
g02q008

Activity Location:
-133.424, 68.1733



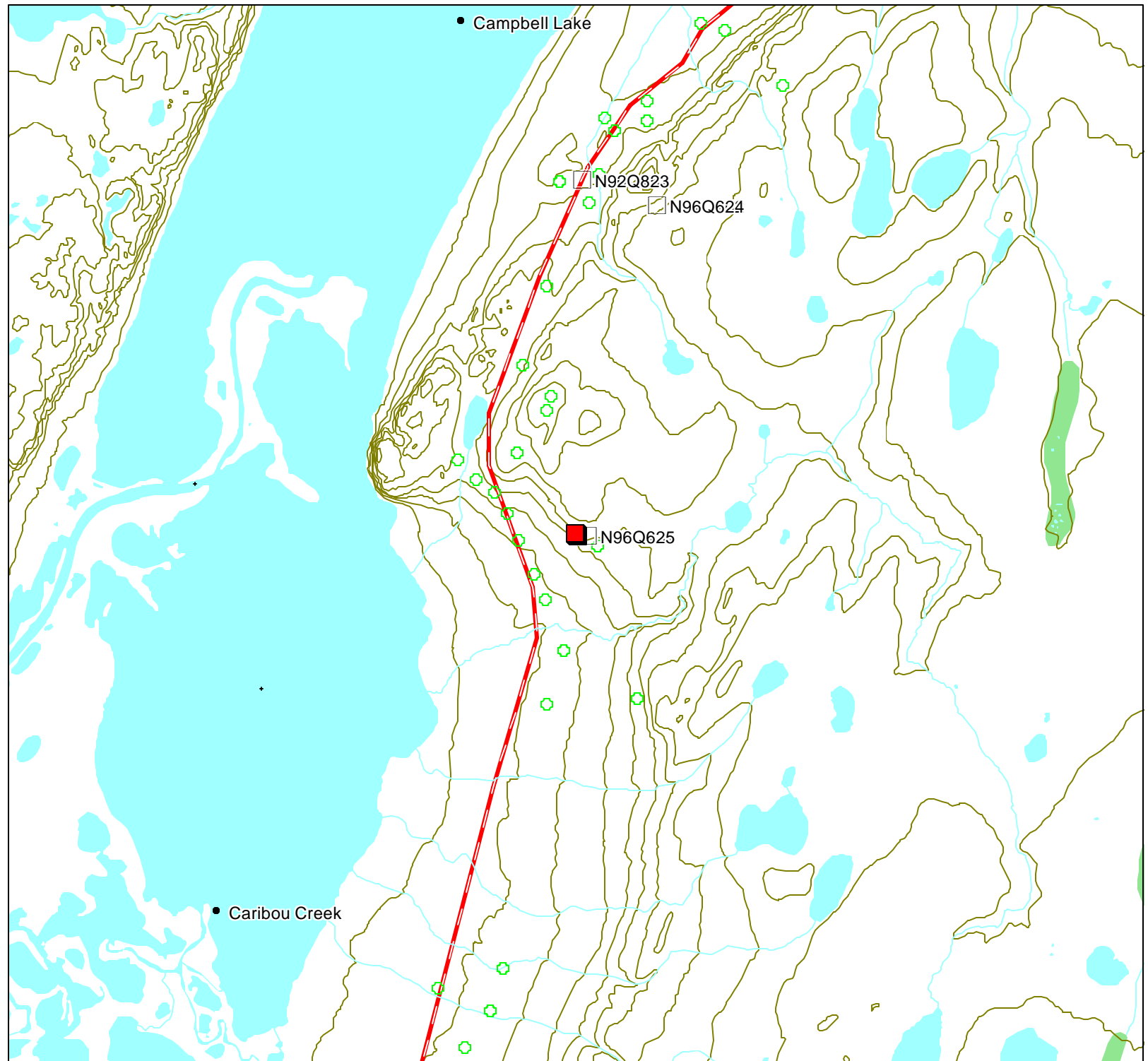
Map Scale: 1:50,000



Map Extent:
Top Left: -133.553, 68.218
Bottom Right: -133.295, 68.1286

Map Projection:
Longitude / Latitude (NAD 27 f-
or Canada)

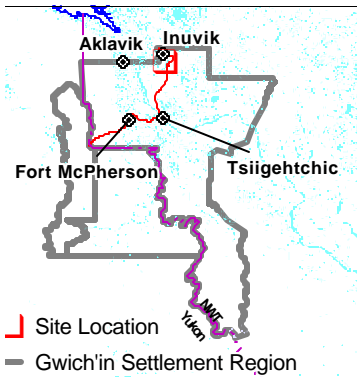
Creation Date: June 27, 2002
Modification Date: June 27, 2002



Project Description Map 1

Permit Number:
g02q008

Activity Location:
-133.424, 68.1733



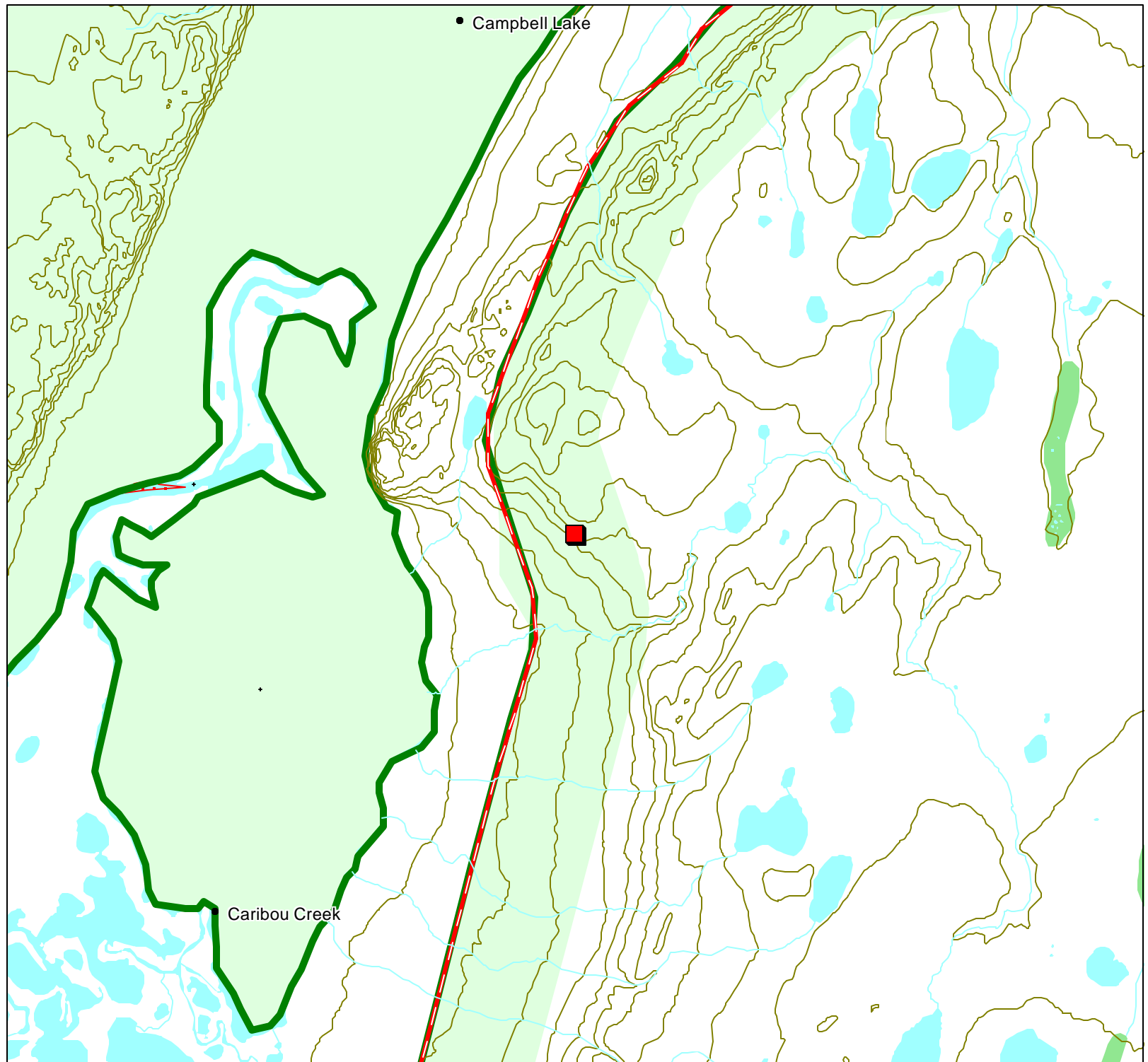
Map Scale: 1:50,000



Map Extent:
Top Left: -133.553, 68.218
Bottom Right: -133.295, 68.1286
















Map Projection:
Longitude / Latitude (NAD 27 f-
or Canada)



Creation Date: June 27, 2002
Modification Date: June 27, 2002






Permit Map Series Legend

Point Layers

-  Activity Location
-  CHIN Heritage and Archeological Sites
-  DFO Fisheries Studies
-  DIAND Boreholes Exploration
-  DIAND Licenses
-  DOT Granular Resources Inventory
-  Env Canada Stream Gauging Stations
-  GSC Mineral Showings
-  GSC Wells
-  Gwich'in Cabins
-  NTDB Contour Lines
-  NWT Mineral Showings
-  NWT Wells
-  NWT/Yukon Placename
-  Rwed Cabins



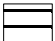

-  RWED Land Permits
-  Yukon Mineral Showings

Line Layers

-  Dempster Highway
-  Dene Traditional Trails
-  NTDB Cutlines

Region Layers

-  GLUPB Proposed Protected Areas
-  GLUPB Special Management Areas
-  Grand River Resource Blocks
-  Gwich'in Harvest Boundaries
-  Gwich'in Parcels
-  Gwich'in Territorial Park
-  NTDB Sand/Gravel

-  NTDB Water Bodies
-  NTDB Wetlands
-  RWED Forest Inventory
-  Town Boundaries