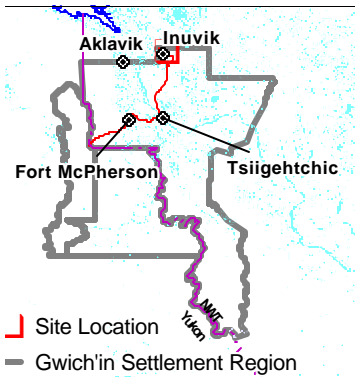


# Project Description Map 1

Permit Number:  
g01q005

Activity Location:  
-133.331, 68.3114



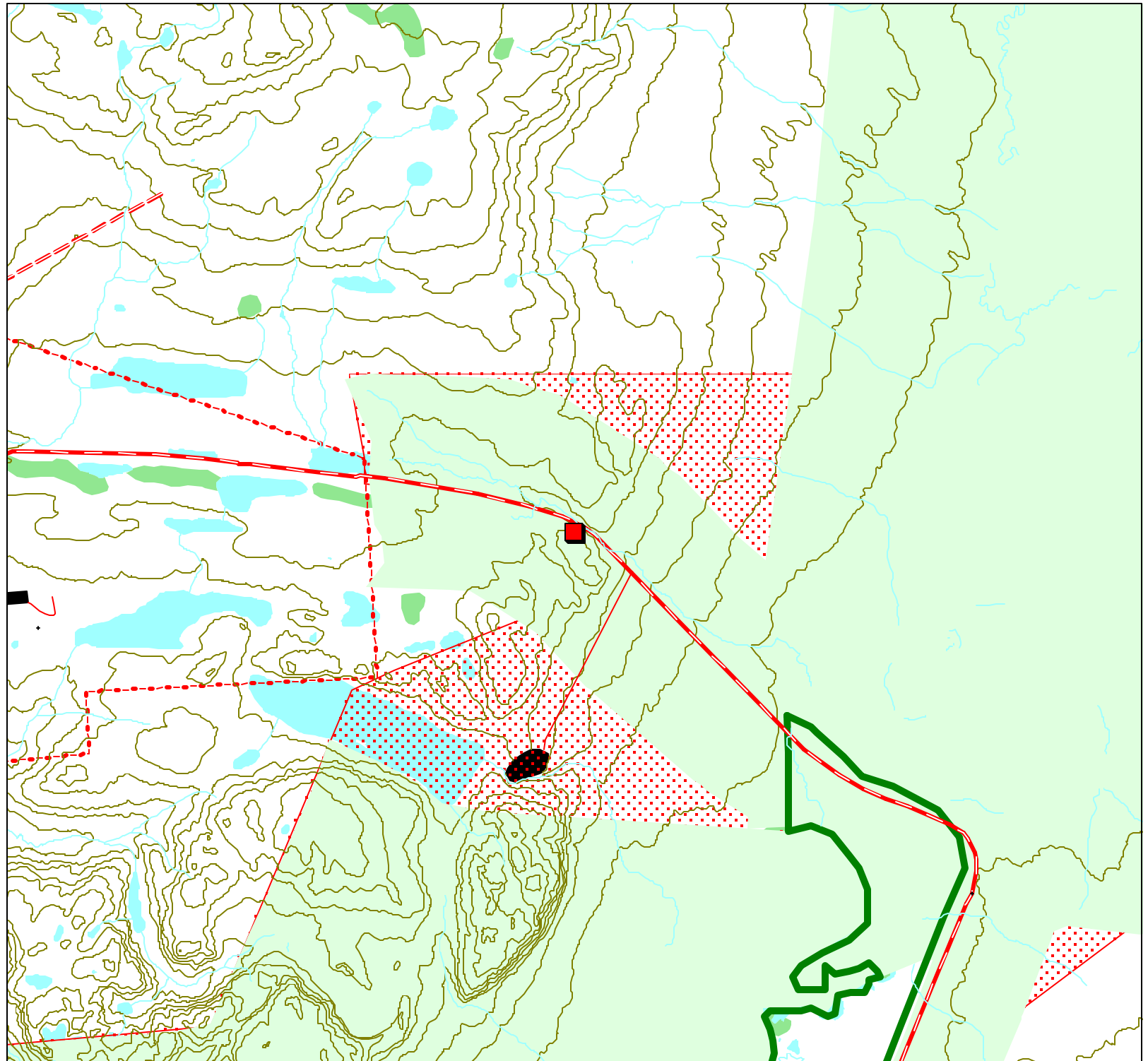
Map Scale: 1:50,000



Map Extent:  
Top Left: -133.461, 68.3462  
Bottom Right: -133.202, 68.2766

Map Projection:  
Longitude / Latitude (NAD 27 f-  
or Canada)

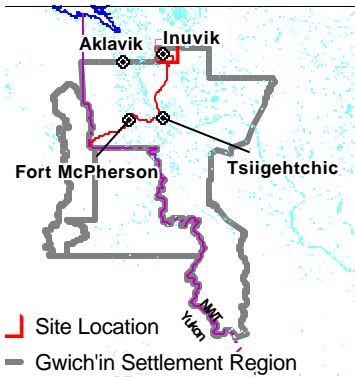
Creation Date: May 15, 2001  
Modification Date: May 15, 2001



# Development Activity Map 3

Permit Number:  
G02Q005

Activity Location:  
-133.325, 68.3072



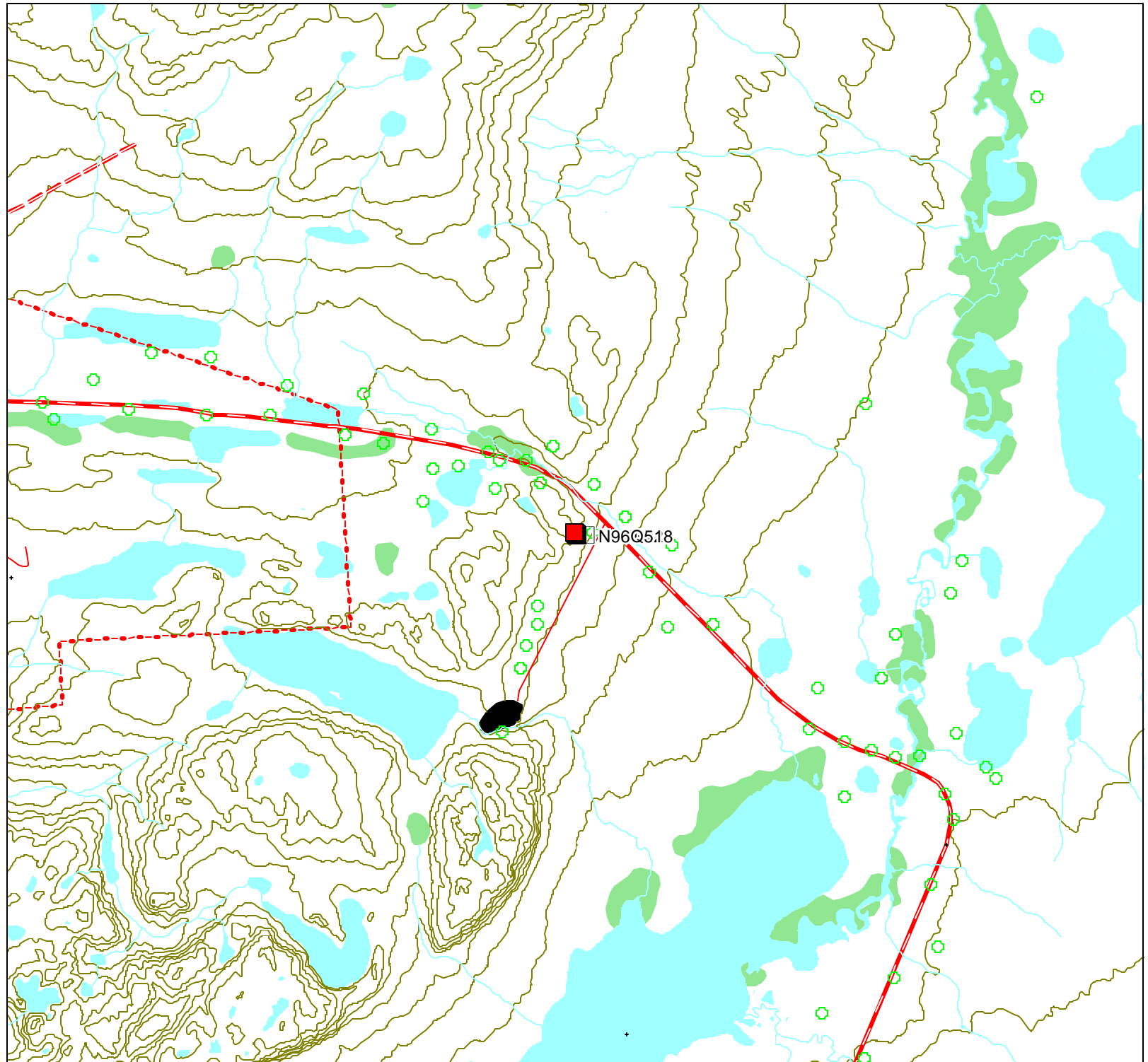
Map Scale: 1:50,000



Map Extent:  
Top Left: -133.454, 68.3519  
Bottom Right: -133.196, 68.2625

Map Projection:  
Longitude / Latitude (NAD 27 f-  
or Canada)

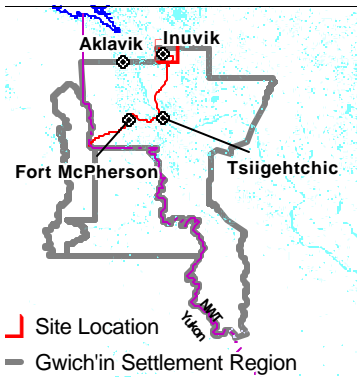
Creation Date: April 15, 2002  
Modification Date: April 15, 2002



# Traditional Use Map 4

Permit Number:  
G02Q005

Activity Location:  
-133.325, 68.3072



Map Scale: 1:50,000



Map Extent:

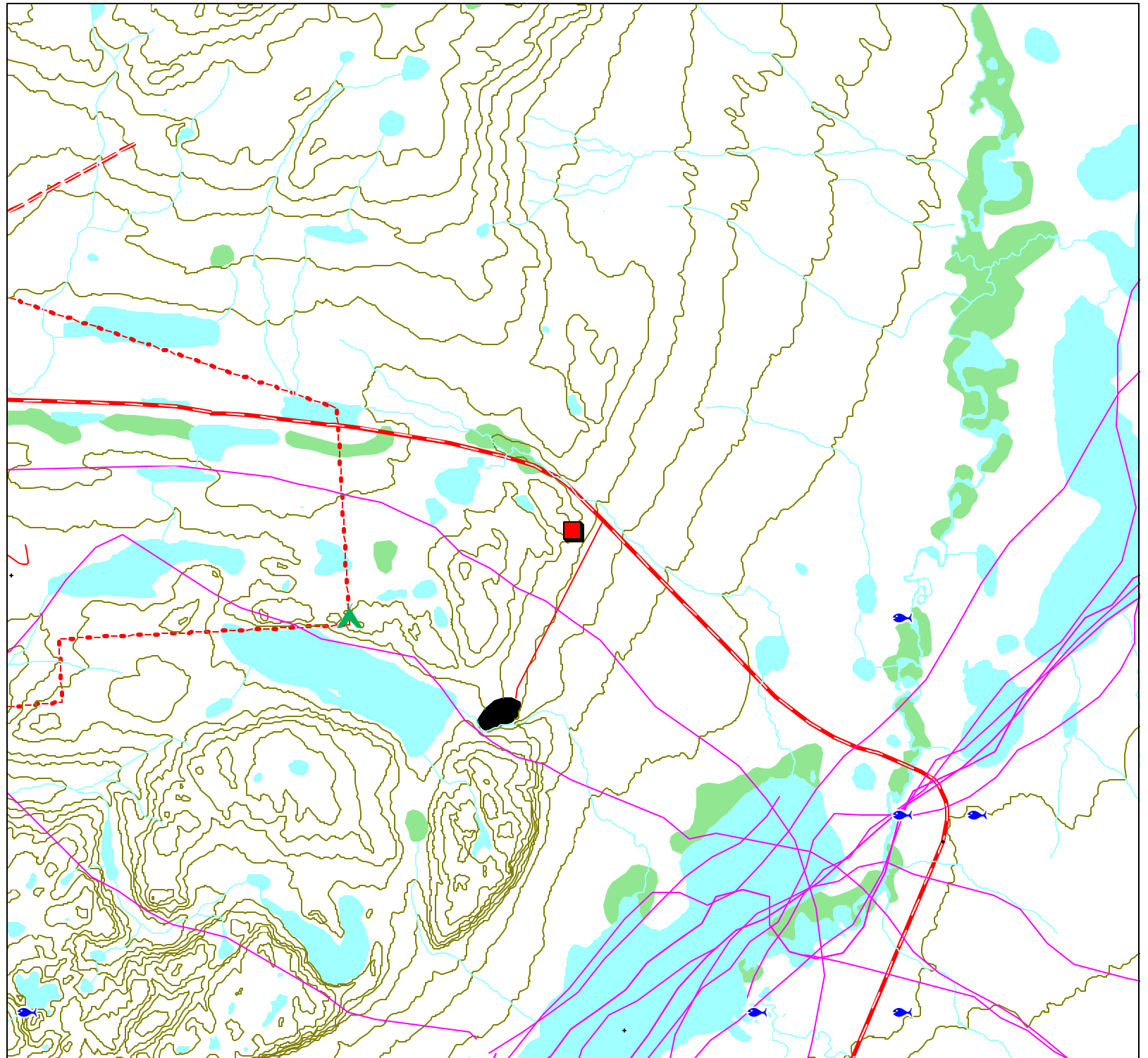
Top Left: -133.454, 68.3519  
Bottom Right: -133.196, 68.2625

Map Projection:

Longitude / Latitude (NAD 27 f-  
or Canada)
















Creation Date: April 15, 2002



Modification Date: April 15, 2002






# Permit Map Series Legend

## Point Layers

-  Activity Location
-  CHIN Heritage and Archeological Sites
-  DFO Fisheries Studies
-  DIAND Boreholes Exploration
-  DIAND Licenses
-  DOT Granular Resources Inventory
-  Env Canada Stream Gauging Stations
-  GSC Mineral Showings
-  GSC Wells
-  Gwich'in Cabins
-  NTDB Contour Lines
-  NWT Mineral Showings
-  NWT Wells
-  NWT/Yukon Placename
-  Rwed Cabins



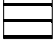

-  RWED Land Permits
-  Yukon Mineral Showings

## Line Layers

-  Dempster Highway
-  Dene Traditional Trails
-  NTDB Cutlines

## Region Layers

-  GLUPB Proposed Protected Areas
-  GLUPB Special Management Areas
-  Grand River Resource Blocks
-  Gwich'in Harvest Boundaries
-  Gwich'in Parcels
-  Gwich'in Territorial Park
-  NTDB Sand/Gravel

-  NTDB Water Bodies
-  NTDB Wetlands
-  RWED Forest Inventory
-  Town Boundaries