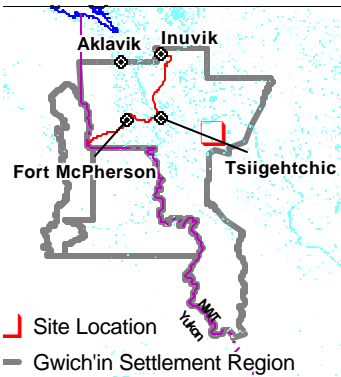


Project Description Map 1

Permit Number:
G02A011

Activity Location:
-131.622, 67.1427

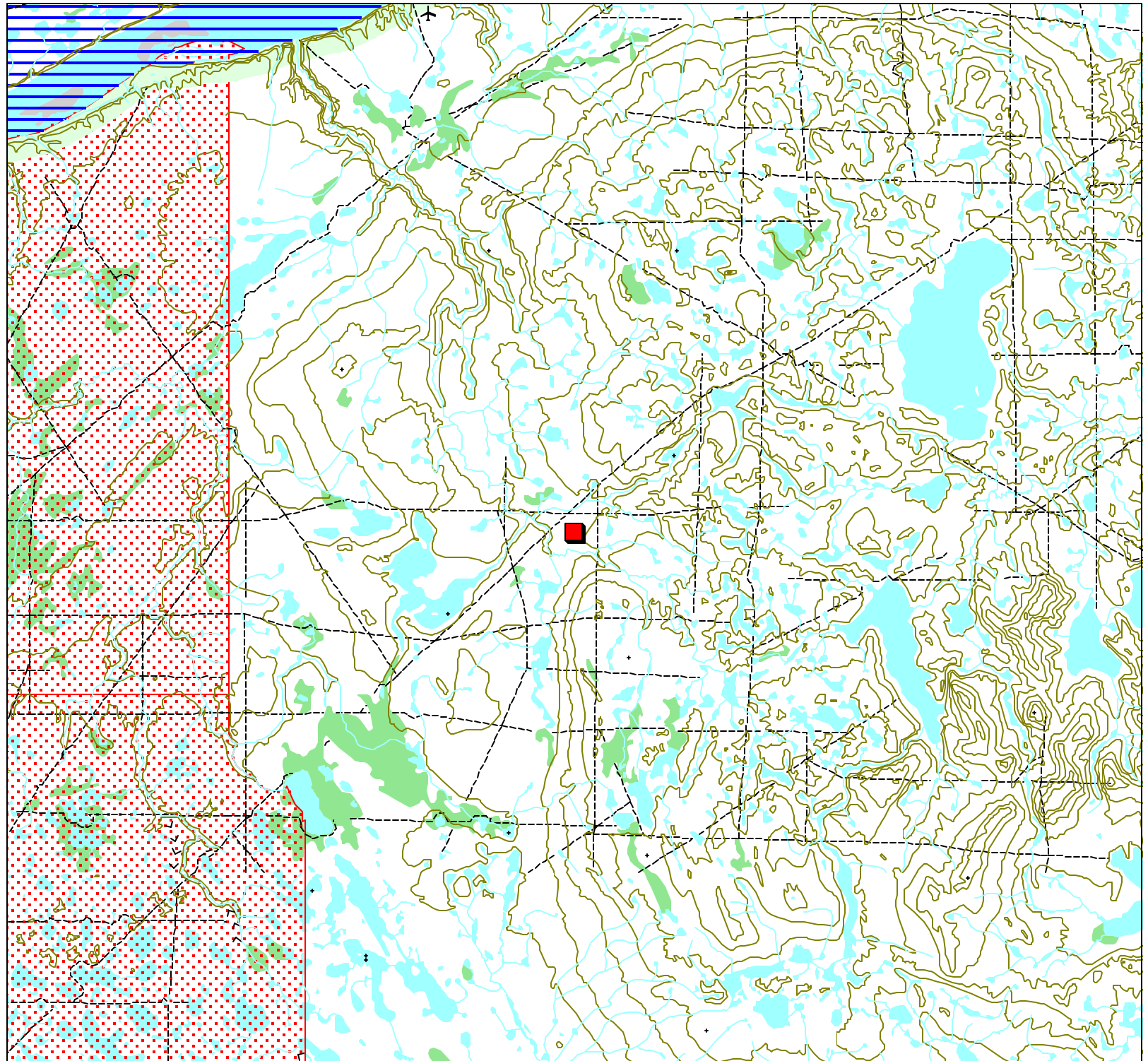


Map Scale: 1:250,000



Map Extent:
Top Left: -132.238, 67.3661
Bottom Right: -131.007, 66.9193

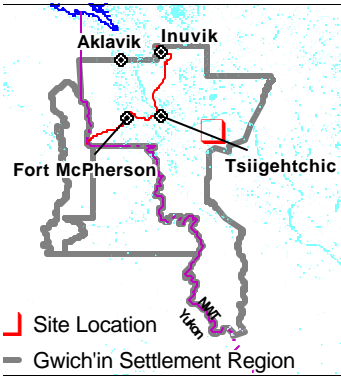
Map Projection:
Longitude / Latitude (NAD 27 f-
or Canada)
Creation Date: March 18, 2004
Modification Date: March 18, 2004



Development Activity Map 3

Permit Number:
G02A011

Activity Location:
-131.622, 67.1427



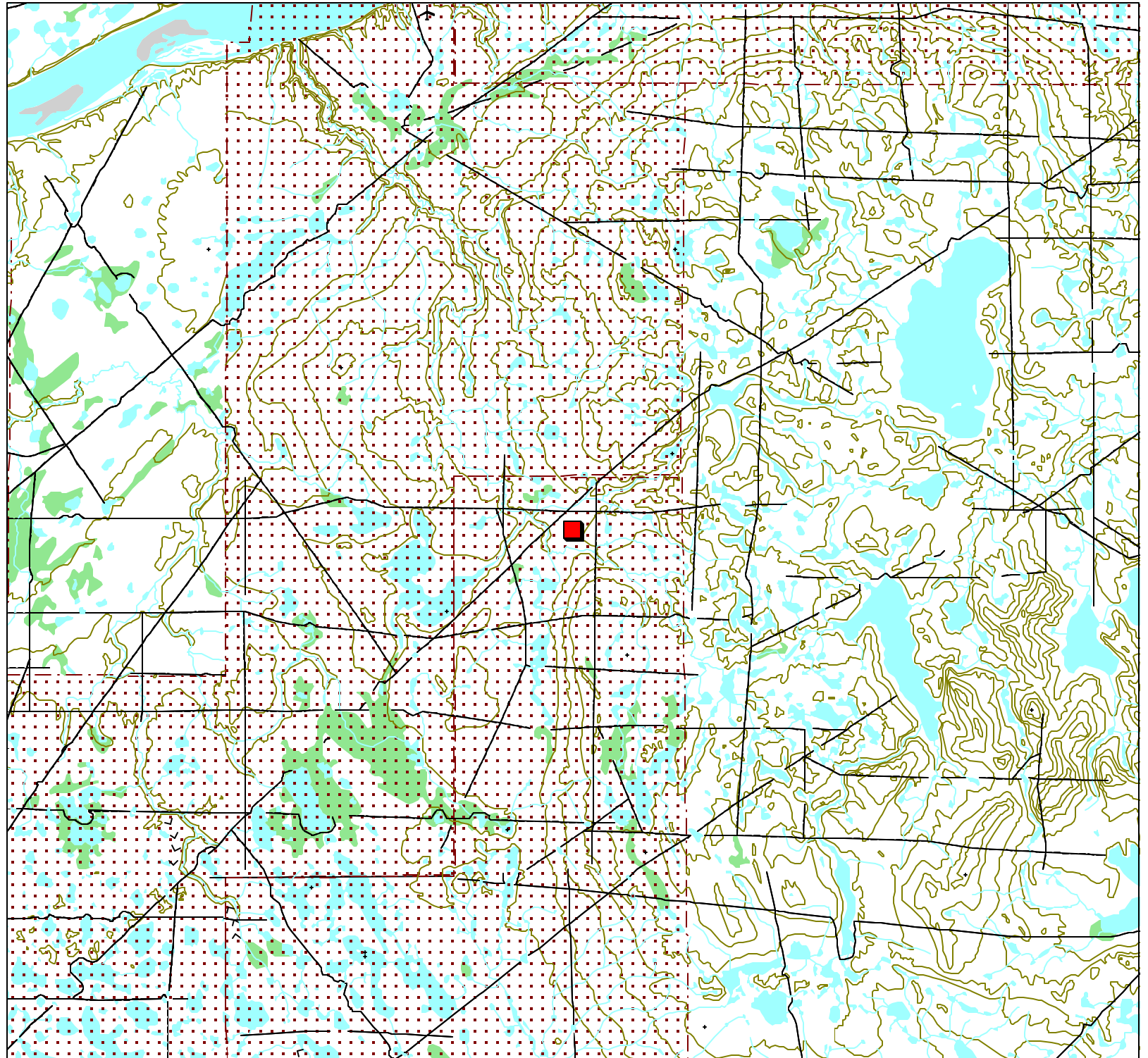
Map Scale: 1:250,000



Map Extent:
Top Left: -132.238, 67.3661
Bottom Right: -131.007, 66.9193

Map Projection:
Longitude / Latitude (NAD 27 f-
or Canada)

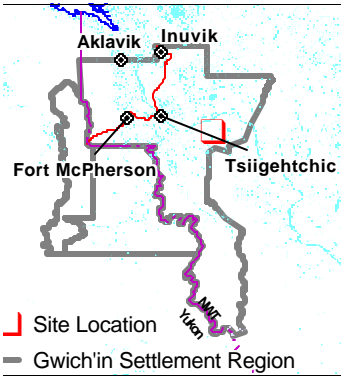
Creation Date: March 18, 2004
Modification Date: March 18, 2004



Traditional Use Map 4

Permit Number:
G02A011

Activity Location:
-131.622, 67.1427

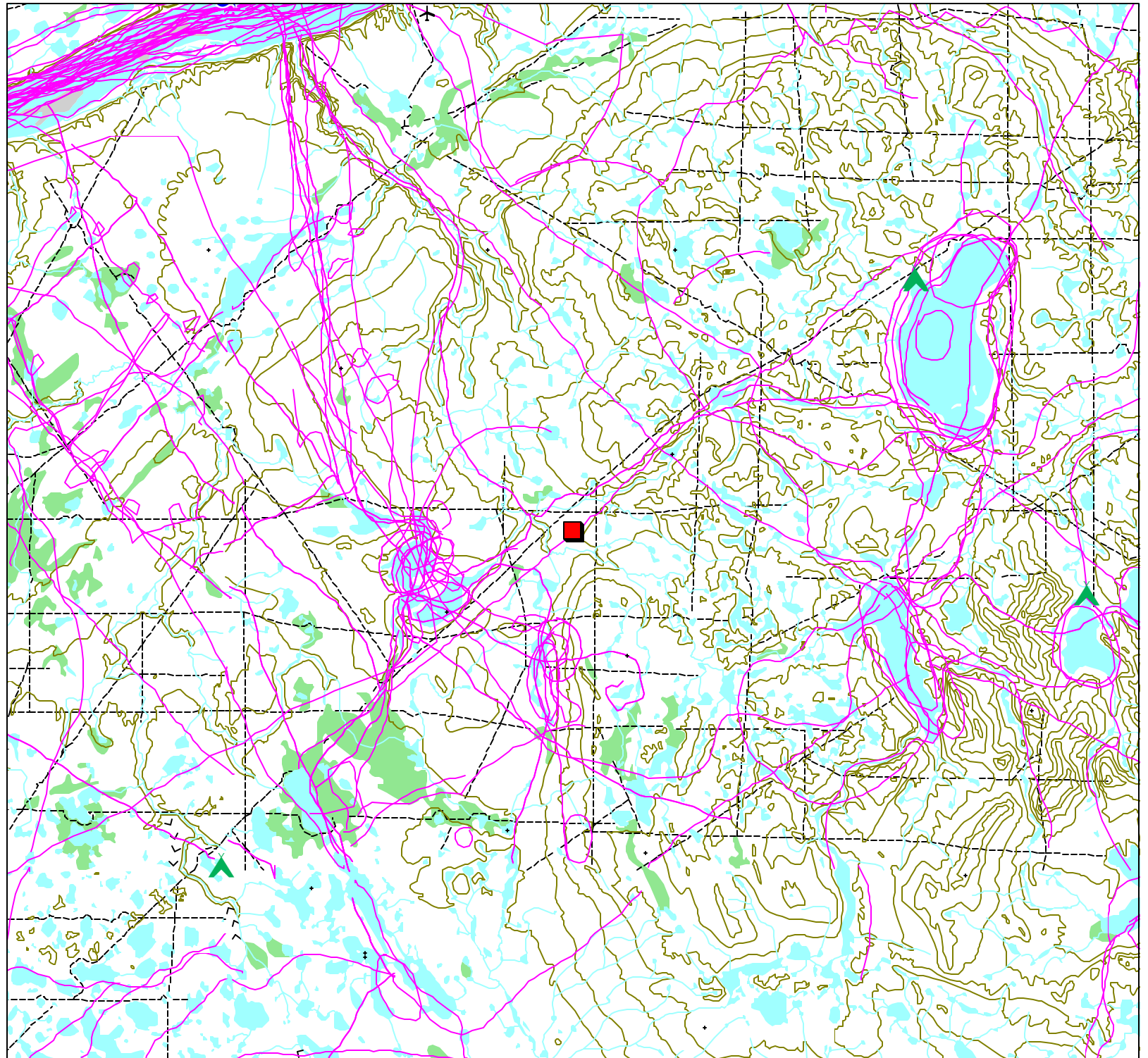


Map Scale: 1:250,000


















Map Extent:
Top Left: -132.238, 67.3661
Bottom Right: -131.007, 66.9193



Map Projection:
Longitude / Latitude (NAD 27 f-
or Canada)
Creation Date: March 18, 2004
Modification Date: March 18, 2004



Permit Map Series Legend

Point Layers


-  Activity Location
-  CHIN Heritage and Archeological Sites
-  DFO Fisheries Studies
-  DIAND Boreholes Exploration
-  DIAND Licenses
-  DOT Granular Resources Inventory
-  Env Canada Stream Gauging Stations
-  GSC Mineral Showings
-  GSC Wells
-  Gwich'in Cabins
-  NTDB Contour Lines
-  NWT Mineral Showings
-  NWT Wells
-  NWT/Yukon Placename
-  Rwed Cabins

-  RWED Land Permits
-  Yukon Mineral Showings




 NTDB Water Bodies

 NTDB Wetlands

 RWED Forest Inventory

 Town Boundaries

Line Layers

-  Dempster Highway
-  Dene Traditional Trails
-  NTDB Cutlines

Region Layers

-  GLUPB Proposed Protected Areas
-  GLUPB Special Management Areas
-  Grand River Resource Blocks
-  Gwich'in Harvest Boundaries
-  Gwich'in Parcels
-  Gwich'in Territorial Park
-  NTDB Sand/Gravel