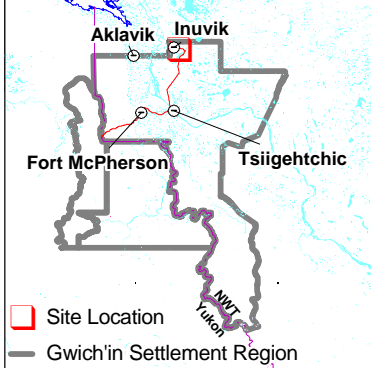
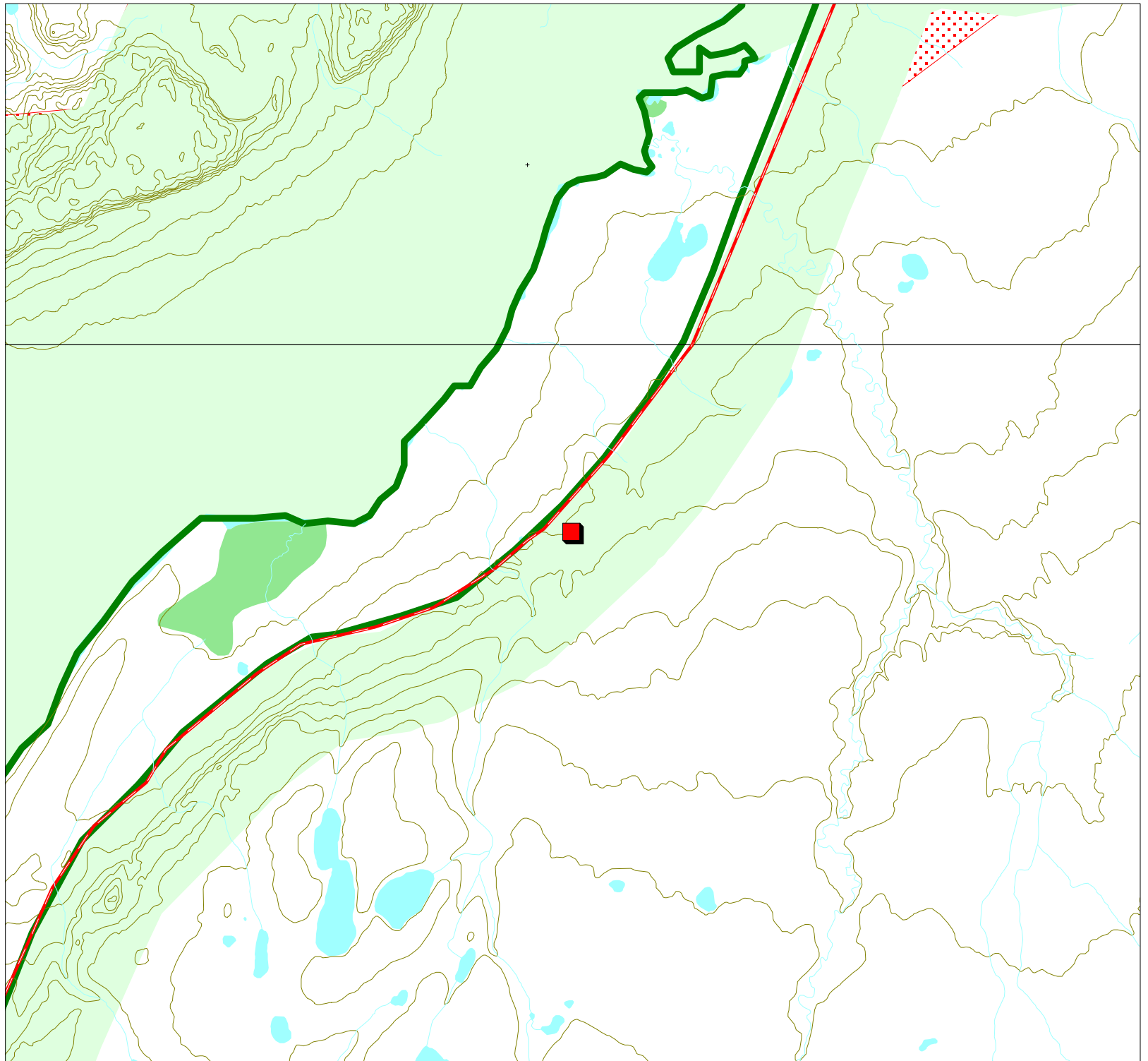


Project Description Map 1

Permit Number:
G01Q009

Activity Location:
-133.303, 68.2341



□ Site Location
— Gwich'in Settlement Region

Map Scale: 1:50,000



Map Extent:
Top Left: -133.432, 68.2788
Bottom Right: -133.174, 68.1894

Map Projection:
Longitude / Latitude (NAD 27 f-
or Canada)

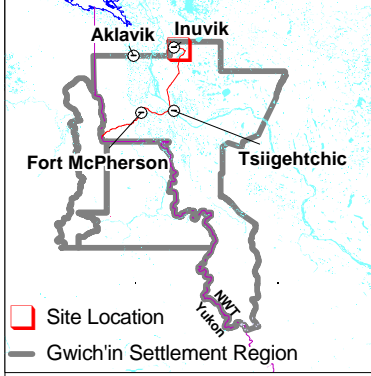
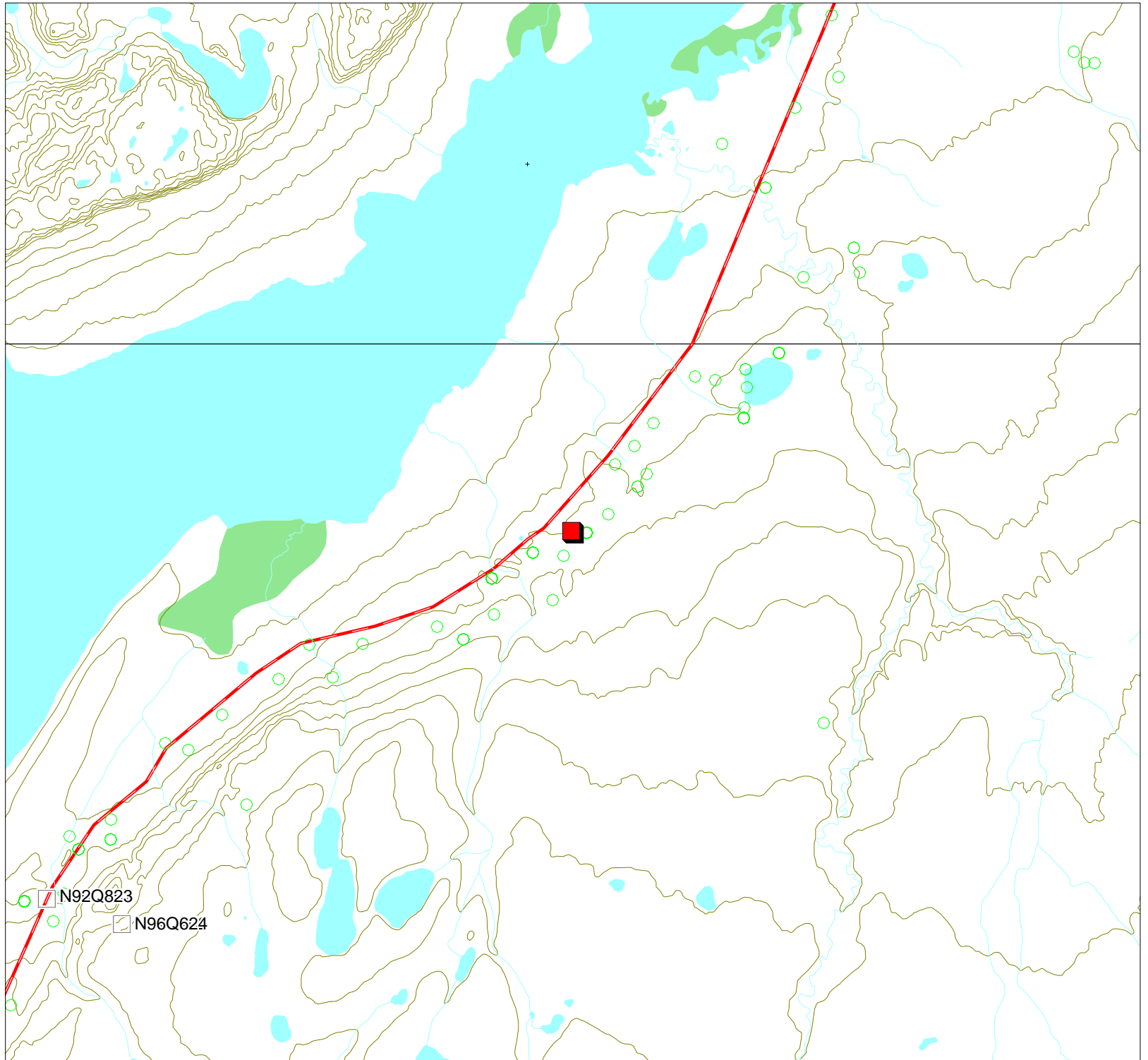
Creation Date: October 18, 2001
Modification Date: October 18, 2001



Development Activity Map 3

Permit Number:
G01Q009

Activity Location:
-133.303, 68.2341



Site Location
Gwich'in Settlement Region

Map Scale: 1:50,000



Map Extent:
Top Left: -133.432, 68.2788
Bottom Right: -133.174, 68.1894

Map Projection:
Longitude / Latitude (NAD 27 f-
or Canada)

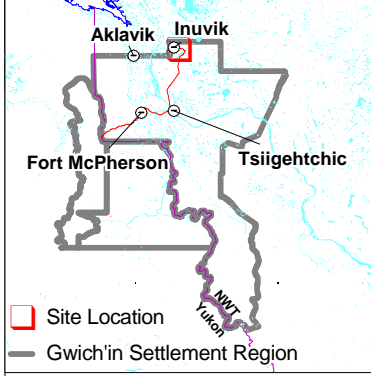
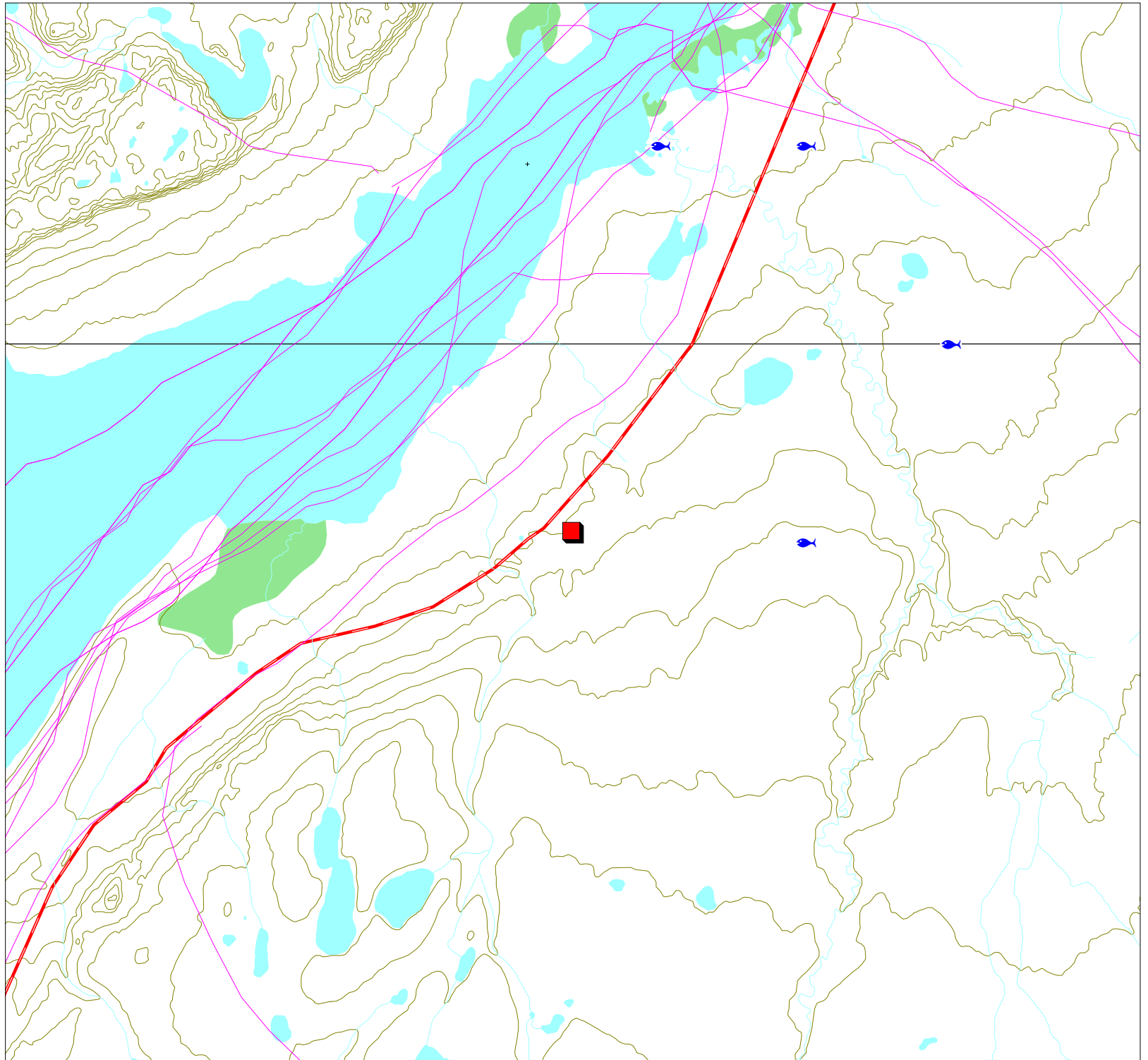
Creation Date: October 18, 2001
Modification Date: October 18, 2001



Traditional Use Map 4

Permit Number:
G01Q009

Activity Location:
-133.303, 68.2341



Map Scale: 1:50,000



Map Extent:
Top Left: -133.432, 68.2788
Bottom Right: -133.174, 68.1894
















Map Projection:
Longitude / Latitude (NAD 27 f-
or Canada)



Creation Date: October 18, 2001
Modification Date: October 18, 2001






Permit Map Series Legend



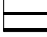

Point Layers

-  Activity Location
-  CHIN Heritage and Archeological Sites
-  DFO Fisheries Studies
-  DIAND Boreholes Exploration
-  DIAND Licenses
-  DOT Granular Resources Inventory
-  Env Canada Stream Gauging Stations
-  GSC Mineral Showings
-  GSC Wells
-  Gwich'in Cabins
-  NTDB Contour Lines
-  NWT Mineral Showings
-  NWT Wells
-  NWT/Yukon Placename
-  Rwed Cabins

-  RWED Land Permits
-  Yukon Mineral Showings

Line Layers

-  Dempster Highway
-  Dene Traditional Trails
-  NTDB Cutlines

-  NTDB Water Bodies
-  NTDB Wetlands
-  RWED Forest Inventory
-  Town Boundaries

Region Layers

-  GLUPB Proposed Protected Areas
-  GLUPB Special Management Areas
-  Grand River Resource Blocks
-  Gwich'in Harvest Boundaries
-  Gwich'in Parcels
-  Gwich'in Territorial Park
-  NTDB Sand/Gravel