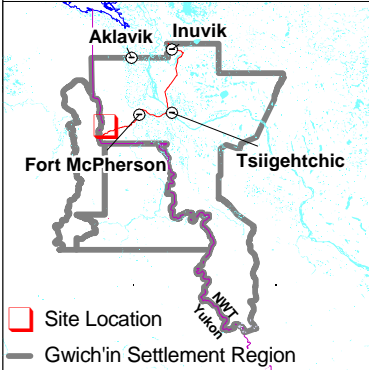


Project Description Map 1

Permit Number:
G01Q007

Activity Location:
-135.82, 67.1794



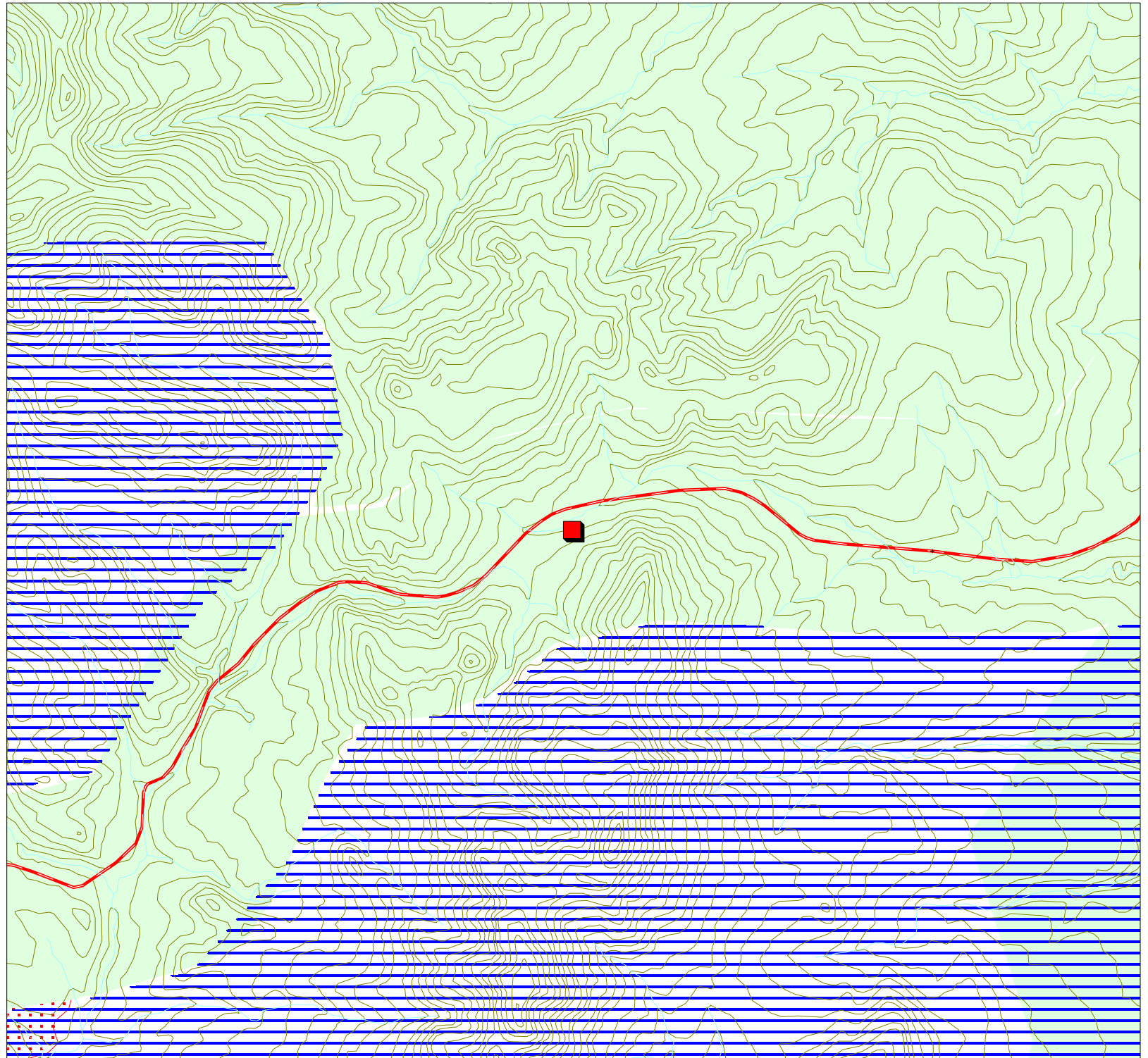
Map Scale: 1:50,000



Map Extent:
Top Left: -135.943, 67.2142
Bottom Right: -135.697, 67.1446

Map Projection:
Longitude / Latitude (NAD 83)

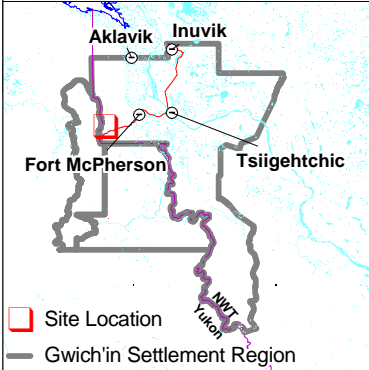
Creation Date: June 7, 2001
Modification Date: June 7, 2001



Development Activity Map 3

Permit Number:
G01Q007

Activity Location:
-135.82, 67.1794



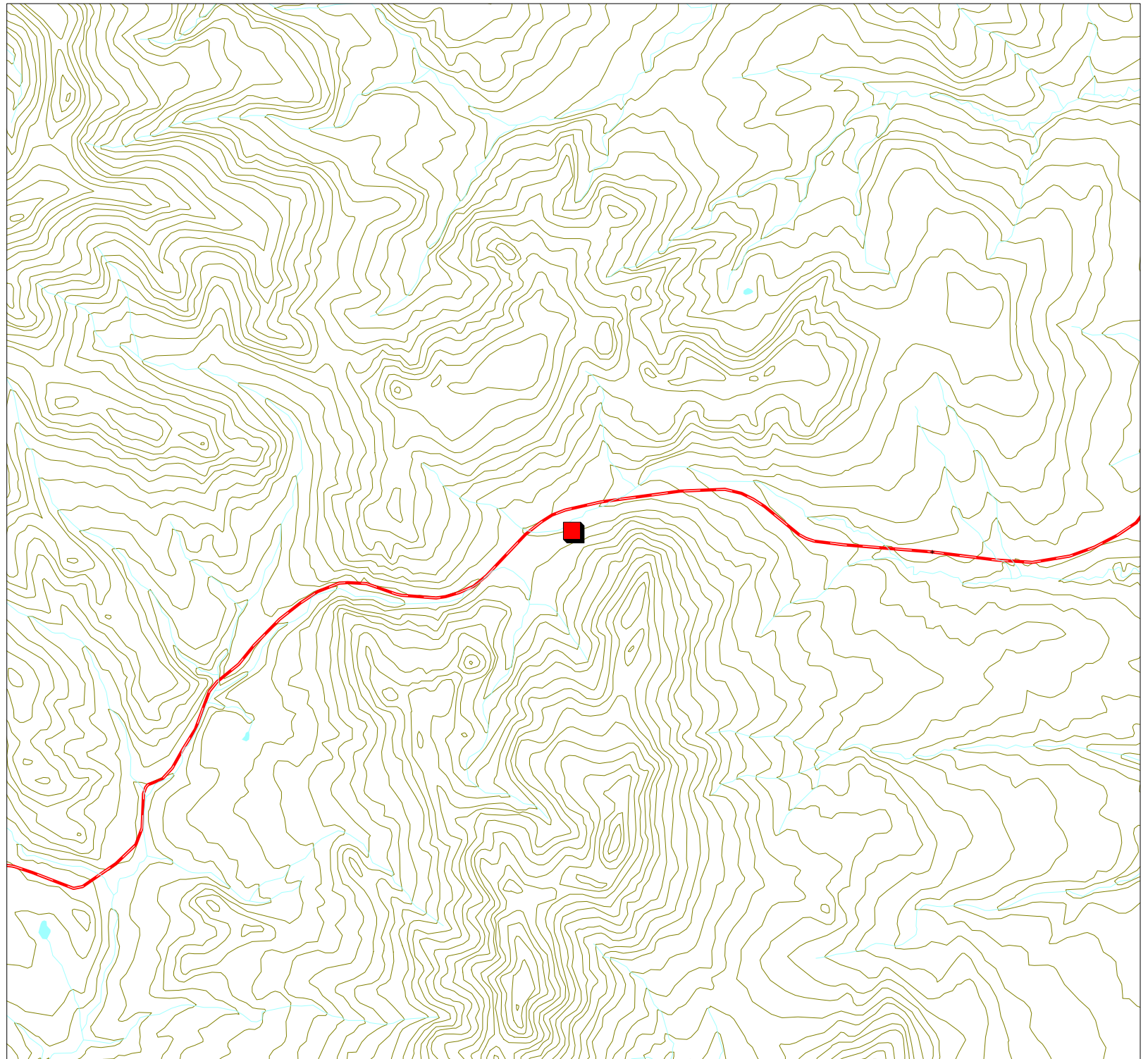
Map Scale: 1:50,000



Map Extent:
Top Left: -135.943, 67.2142
Bottom Right: -135.697, 67.1446

Map Projection:
Longitude / Latitude (NAD 83)

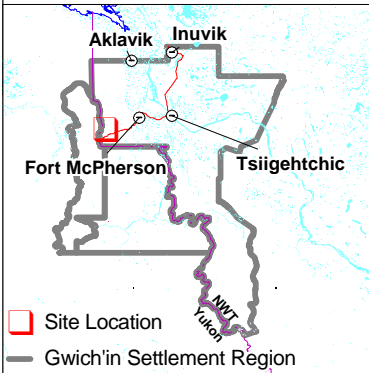
Creation Date: June 7, 2001
Modification Date: June 7, 2001



Traditional Use Map 4

Permit Number:
G01Q007

Activity Location:
-135.82, 67.1794



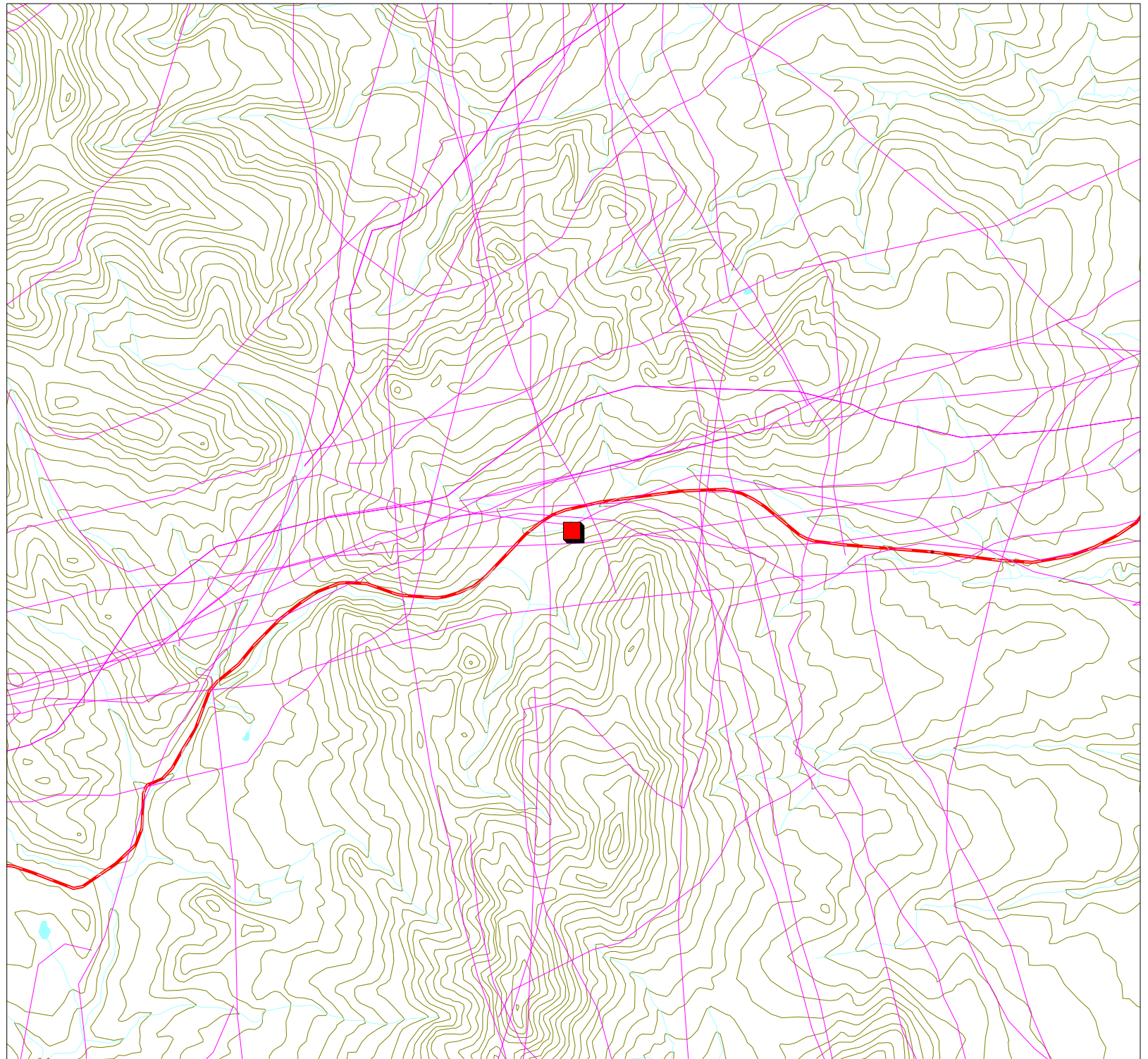
Map Scale: 1:50,000



Map Extent:
Top Left: -135.943, 67.2142
Bottom Right: -135.697, 67.1446
















Map Projection:
Longitude / Latitude (NAD 83)



Creation Date: June 7, 2001
Modification Date: June 7, 2001






Permit Map Series Legend

Point Layers



-  Activity Location
-  CHIN Heritage and Archeological Sites
-  DFO Fisheries Studies
-  DIAND Boreholes Exploration
-  DIAND Licenses
-  DOT Granular Resources Inventory
-  Env Canada Stream Gauging Stations
-  GSC Mineral Showings
-  GSC Wells
-  Gwich'in Cabins
-  NTDB Contour Lines
-  NWT Mineral Showings
-  NWT Wells
-  NWT/Yukon Placename
-  Rwed Cabins



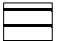

-  RWED Land Permits
-  Yukon Mineral Showings

Line Layers

-  Dempster Highway
-  Dene Traditional Trails
-  NTDB Cutlines

Region Layers

-  GLUPB Proposed Protected Areas
-  GLUPB Special Management Areas
-  Grand River Resource Blocks
-  Gwich'in Harvest Boundaries
-  Gwich'in Parcels
-  Gwich'in Territorial Park
-  NTDB Sand/Gravel

-  NTDB Water Bodies
-  NTDB Wetlands
-  RWED Forest Inventory
-  Town Boundaries