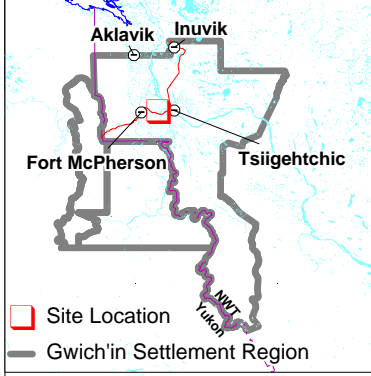
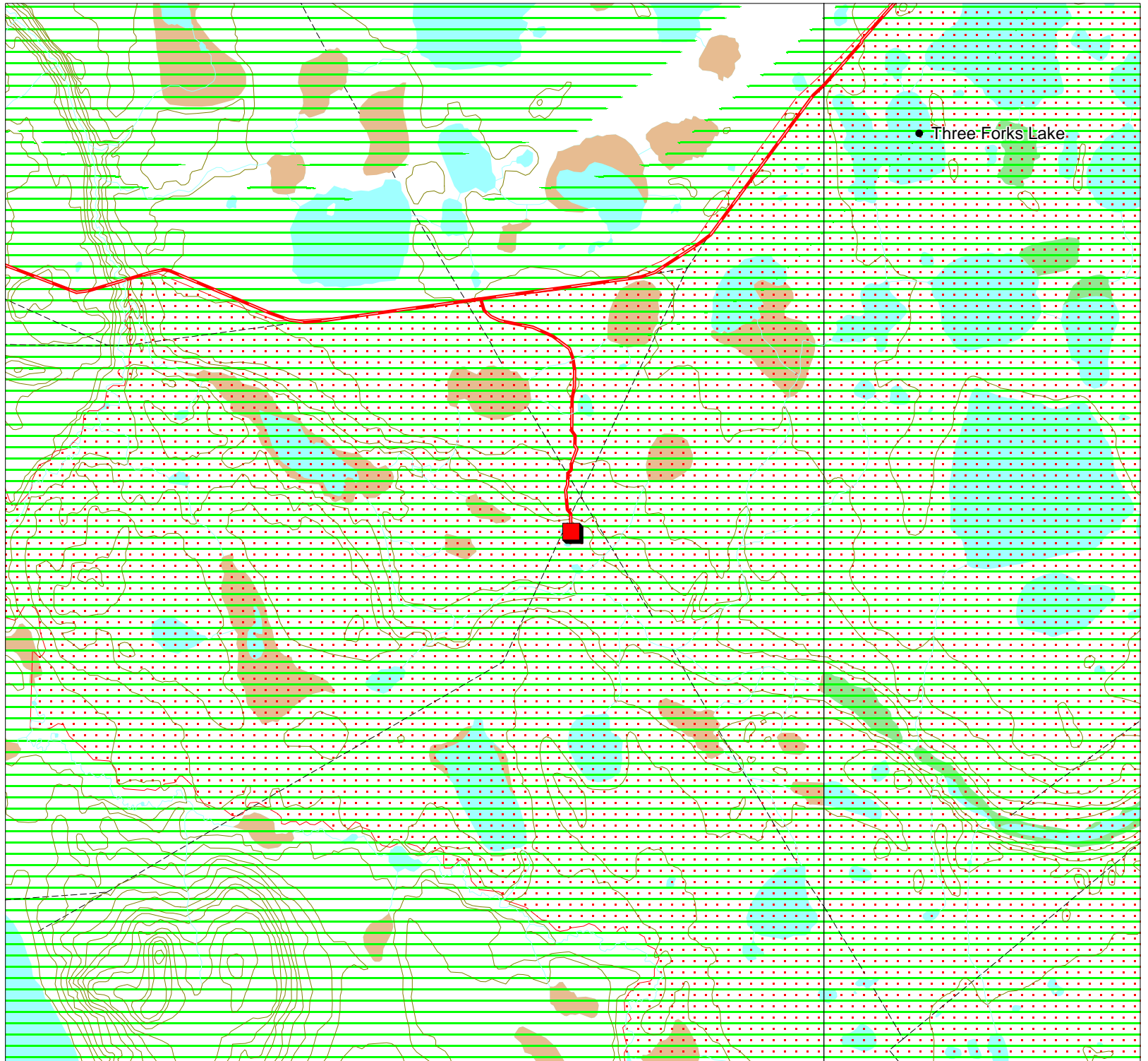


Project Description Map 1

Permit Number:
G99S022

Activity Location:
-134.055, 67.3635



Map Scale: 1:50,000



Map Extent:
Top Left: -134.179, 67.4082
Bottom Right: -133.931, 67.3188

Map Projection:
Longitude / Latitude (NAD 83)

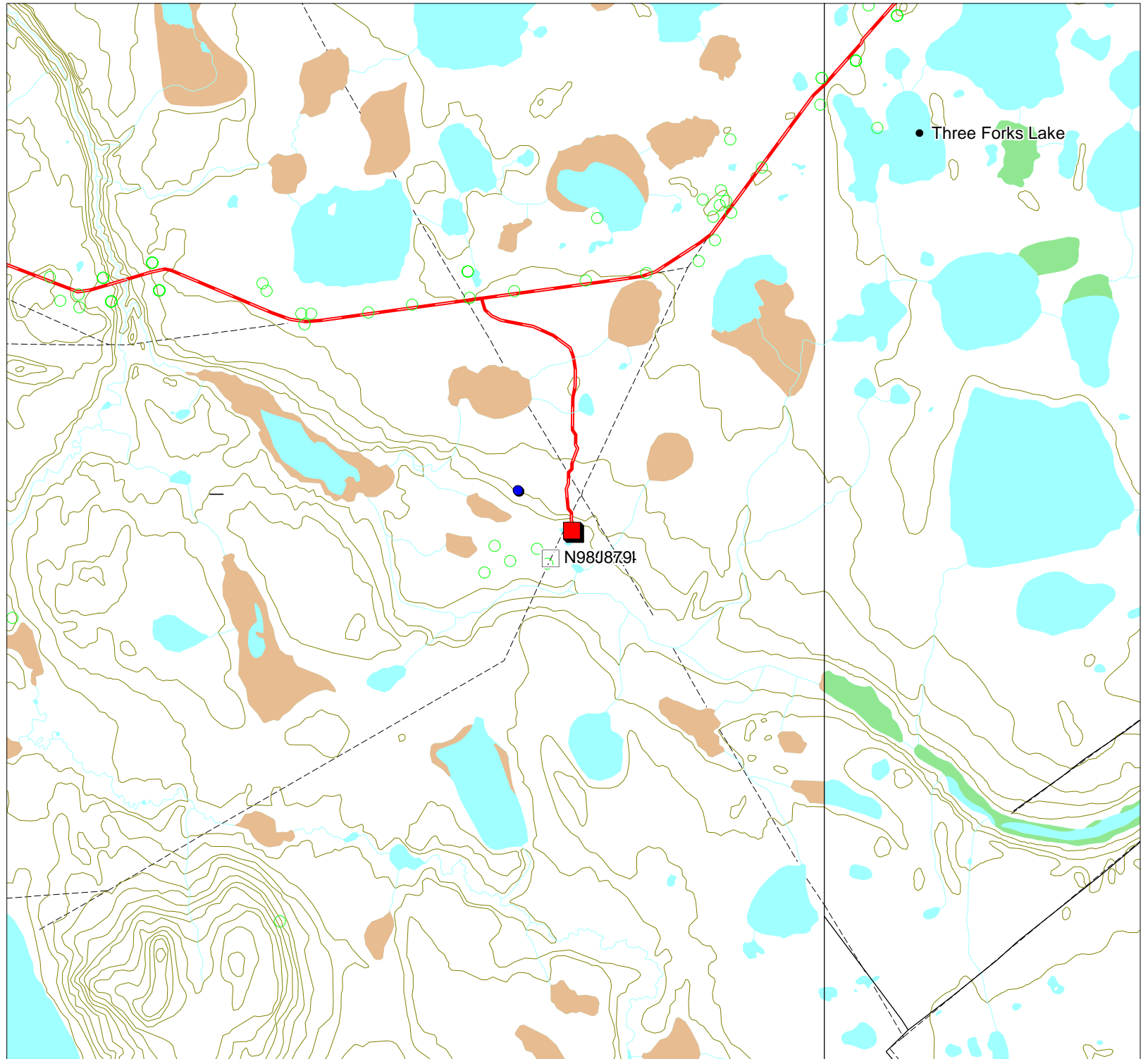
Creation Date: August 17, 1999
Modification Date: August 17, 1999



Development Activity Map 3

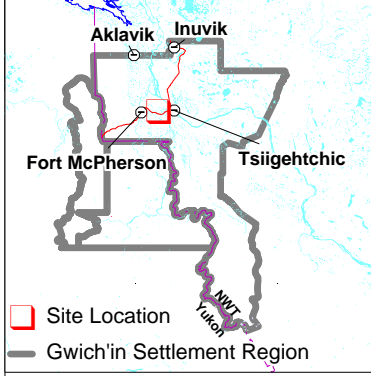
Permit Number:
G99S022

Activity Location:
-134.055, 67.3635



• Three Forks Lake

N98J879I



□ Site Location
— Gwich'in Settlement Region

Map Scale: 1:50,000



Map Extent:
Top Left: -134.179, 67.4082
Bottom Right: -133.931, 67.3188

Map Projection:
Longitude / Latitude (NAD 83)

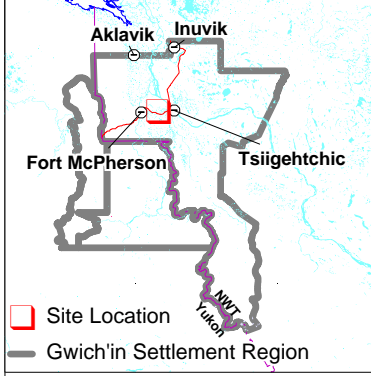
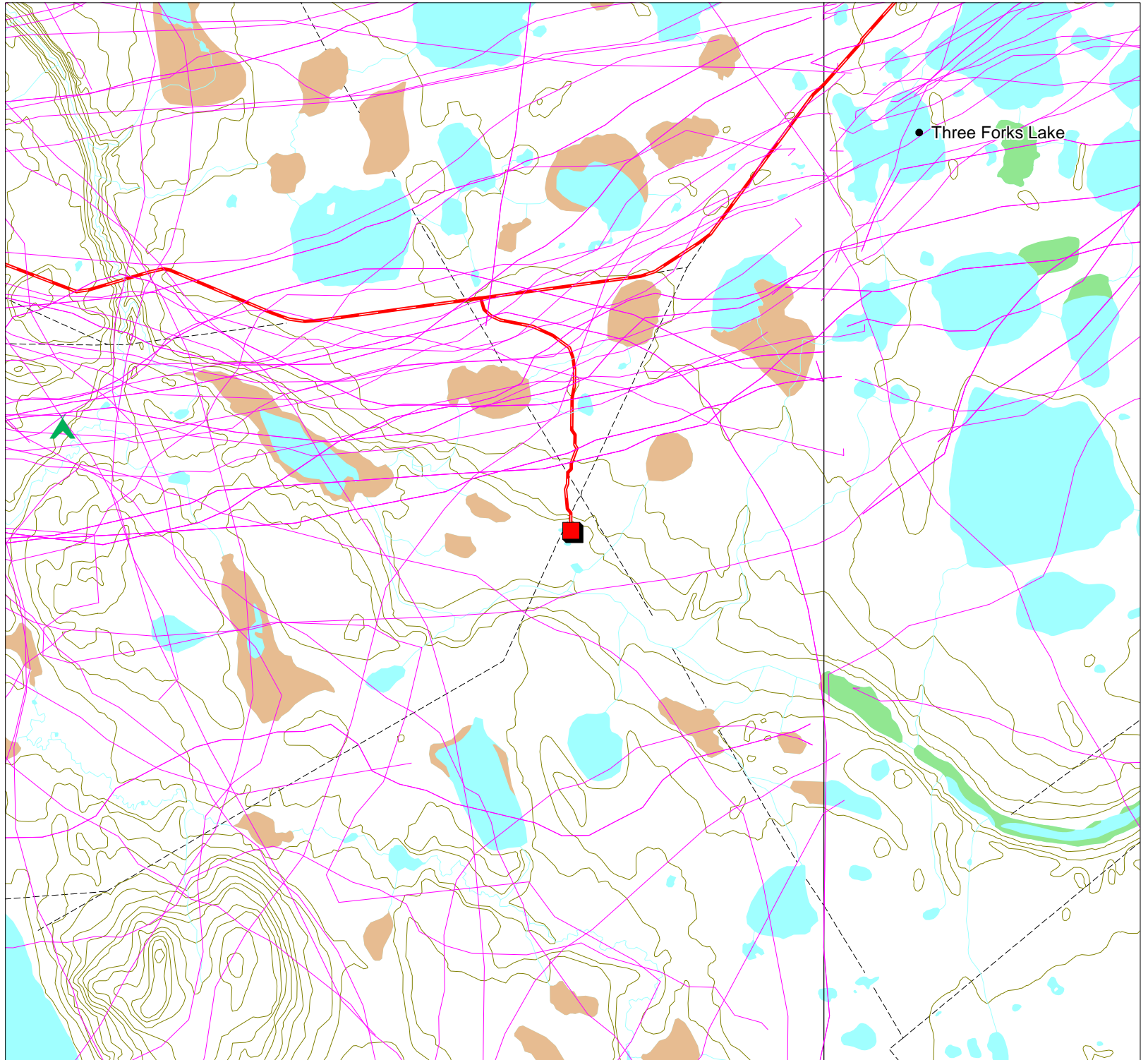
Creation Date: August 17, 1999
Modification Date: August 17, 1999



Traditional Use Map 4

Permit Number:
G99S022

Activity Location:
-134.055, 67.3635



Site Location
Gwich'in Settlement Region

Map Scale: 1:50,000

Map Extent:
Top Left: -134.179, 67.4082
Bottom Right: -133.931, 67.3188
















Map Projection:
Longitude / Latitude (NAD 83)





Creation Date: August 17, 1999
Modification Date: August 17, 1999






Permit Map Series Legend

Point Layers


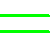



-  Activity Location
-  CHIN Heritage and Archeological Sites
-  DFO Fisheries Studies
-  DIAND Boreholes Exploration
-  DIAND Licenses
-  DOT Granular Resources Inventory
-  Env Canada Stream Gauging Stations
-  GSC Mineral Showings
-  GSC Wells
-  Gwich'in Cabins
-  NTDB Contour Lines
-  NWT Mineral Showings
-  NWT Wells
-  NWT/Yukon Placename
-  Public Registry









-  Rwed Cabins
-  RWED Land Permits
-  Surface disposition
-  Yukon Mineral Showings

Line Layers

-  Dempster Highway
-  Dene Traditional Trails
-  NTDB Cutlines

Region Layers

-  GLUPB Proposed Protected Areas
-  GLUPB Special Management Areas
-  Grand River Resource Blocks
-  Gwich'in Harvest Boundaries
-  Gwich'in Parcels

-  Gwich'in Territorial Park
-  Mineral lease
-  NTDB Sand/Gravel
-  NTDB Water Bodies
-  NTDB Wetlands
-  Prospect Lease 98
-  RWED Forest Inventory
-  Town Boundaries