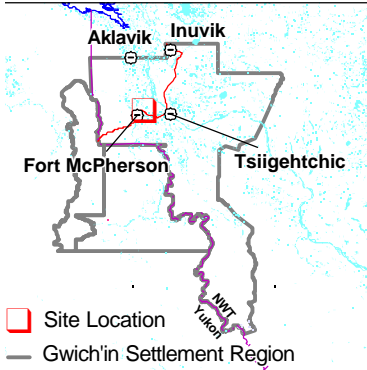


Project Description Map 1

Permit Number:
g00e010

Activity Location:
-134.425, 67.4089



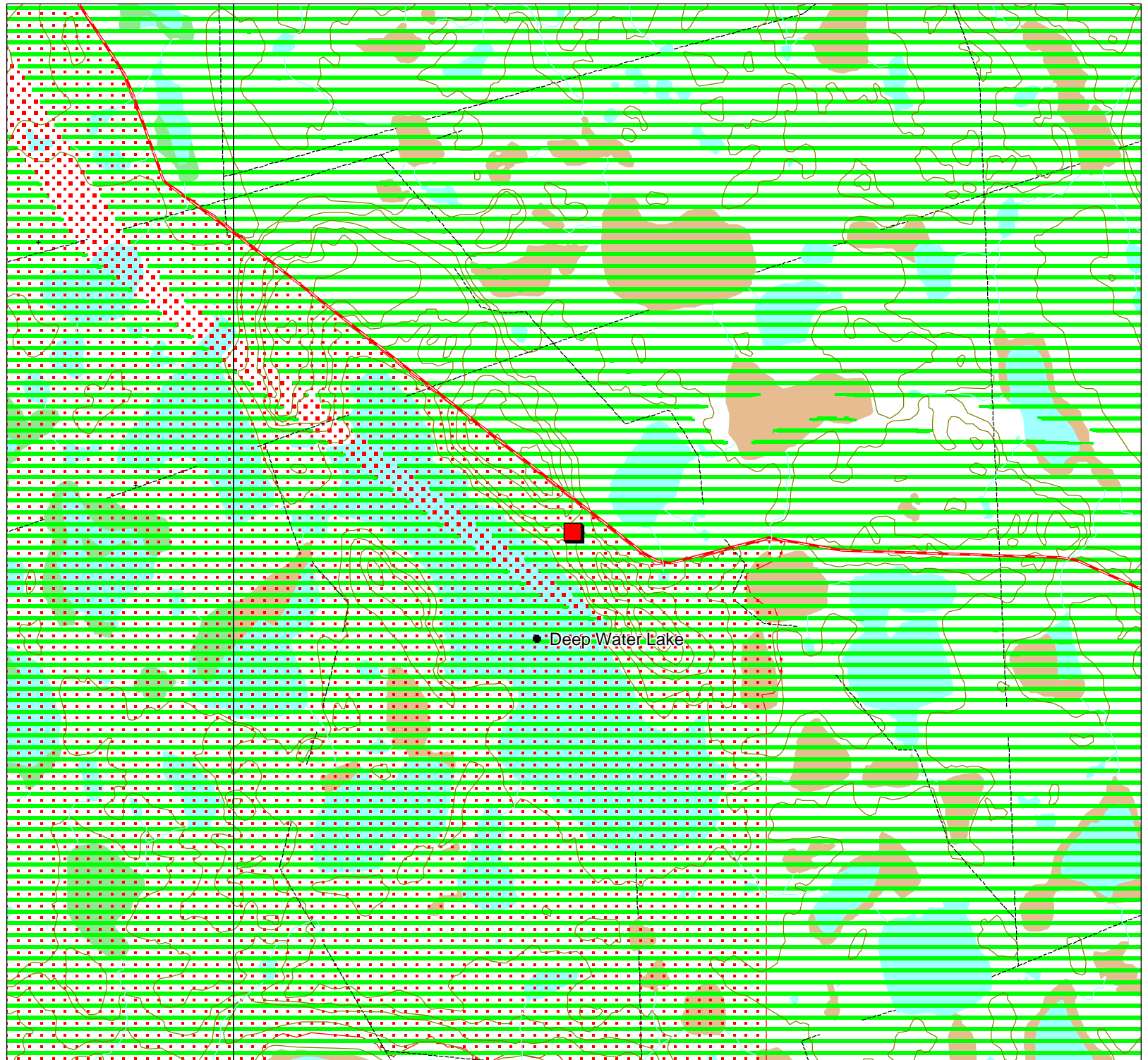
Map Scale: 1:50,000



Map Extent:
Top Left: -134.55, 67.4536
Bottom Right: -134.301, 67.3642

Map Projection:
Longitude / Latitude (NAD 83)

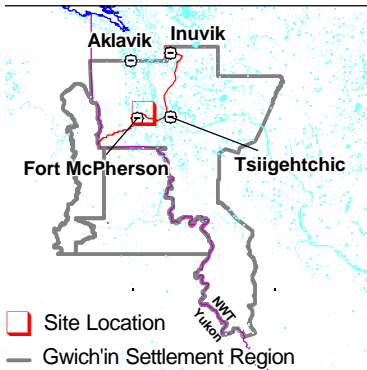
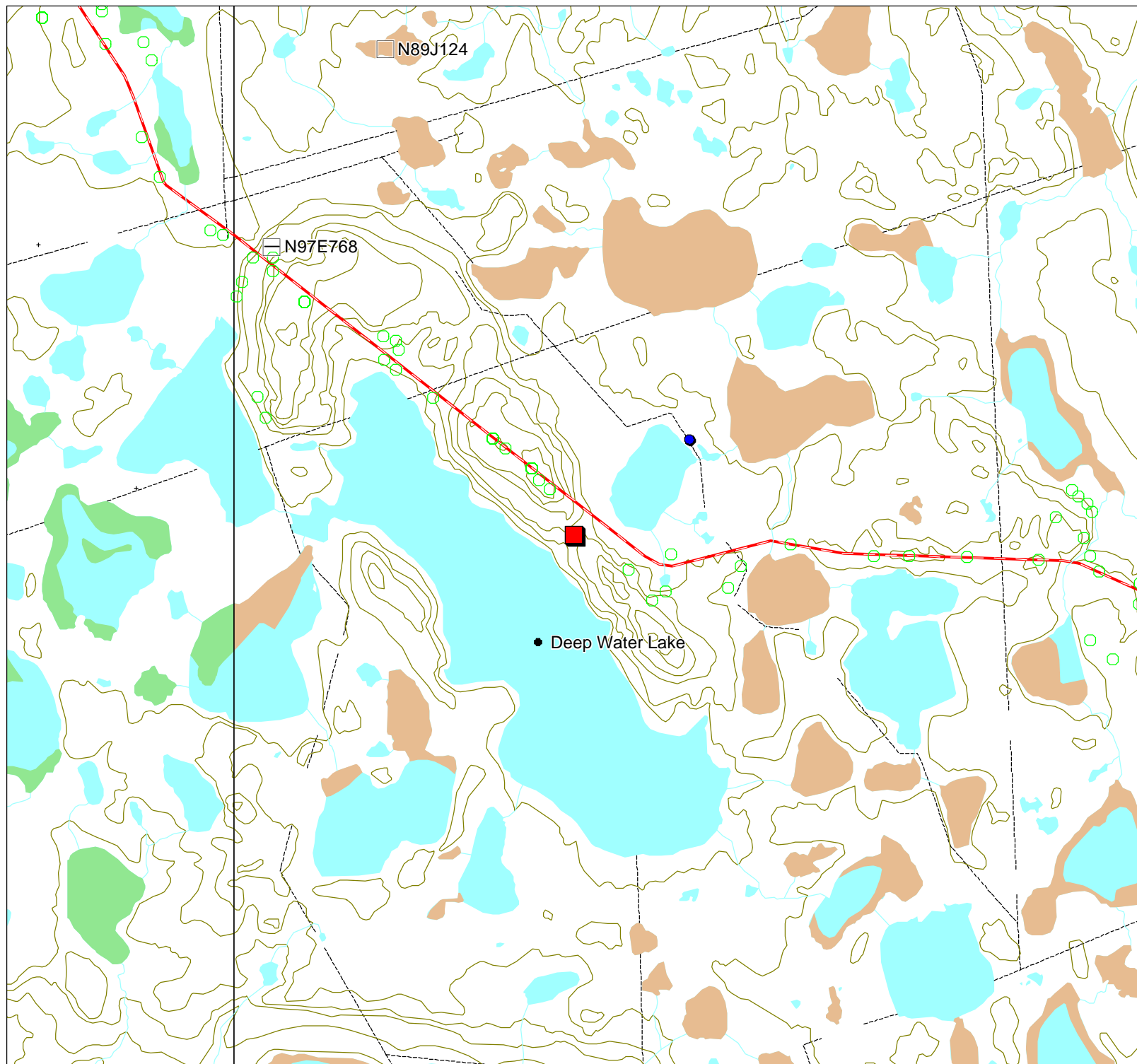
Creation Date: August 22, 2000
Modification Date: August 22, 2000



Development Activity Map 3

Permit Number:
g00e010

Activity Location:
-134.425, 67.4089



- Site Location
- Gwich'in Settlement Region

Map Scale: 1:50,000



Map Extent:
Top Left: -134.55, 67.4536
Bottom Right: -134.301, 67.3642

Map Projection:
Longitude / Latitude (NAD 83)

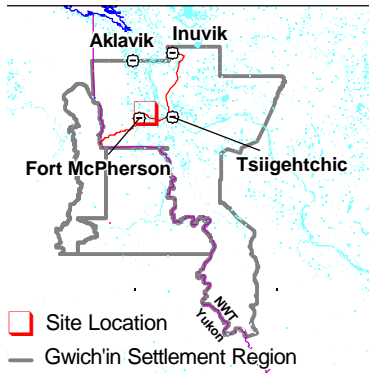
Creation Date: August 22, 2000
Modification Date: August 22, 2000



Traditional Use Map 4

Permit Number:
g00e010

Activity Location:
-134.425, 67.4089



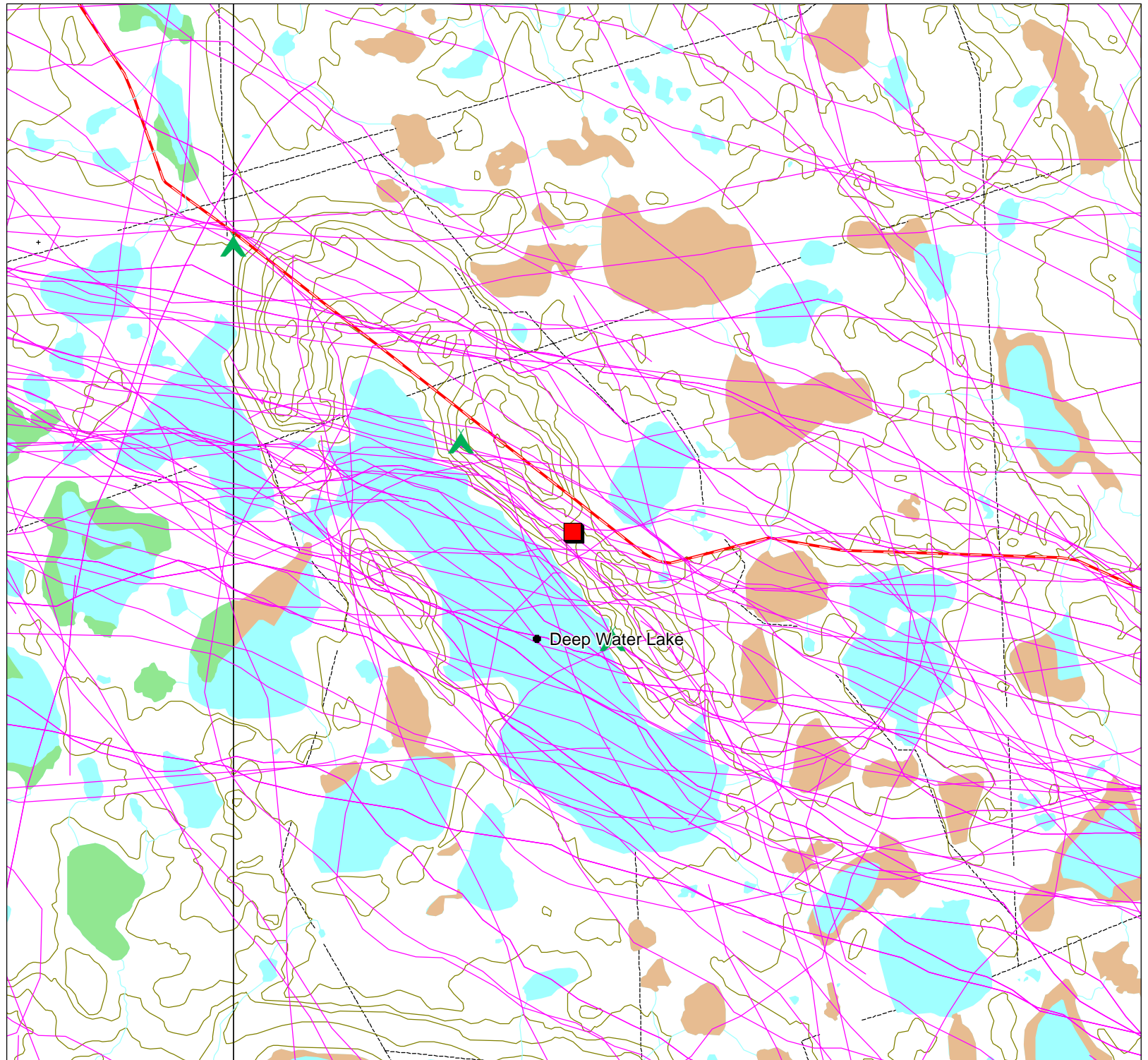
Map Scale: 1:50,000



Map Extent:
Top Left: -134.55, 67.4536
Bottom Right: -134.301, 67.3642
















Map Projection:
Longitude / Latitude (NAD 83)





Creation Date: August 22, 2000
Modification Date: August 22, 2000






Permit Map Series Legend

Point Layers






-  Activity Location
-  CHIN Heritage and Archeological Sites
-  DFO Fisheries Studies
-  DIAND Boreholes Exploration
-  DIAND Licenses
-  DOT Granular Resources Inventory
-  Env Canada Stream Gauging Stations
-  GSC Mineral Showings
-  GSC Wells
-  Gwich'in Cabins
-  NTDB Contour Lines
-  NWT Mineral Showings
-  NWT Wells
-  NWT/Yukon Placename
-  Public Registry







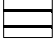

-  Rwed Cabins
-  RWED Land Permits
-  Surface disposition
-  Yukon Mineral Showings

Line Layers

-  Dempster Highway
-  Dene Traditional Trails
-  NTDB Cutlines

Region Layers

-  GLUPB Proposed Protected Areas
-  GLUPB Special Management Areas
-  Grand River Resource Blocks
-  Gwich'in Harvest Boundaries
-  Gwich'in Parcels

-  Gwich'in Territorial Park
-  Mineral lease
-  NTDB Sand/Gravel
-  NTDB Water Bodies
-  NTDB Wetlands
-  Prospect Lease 98
-  RWED Forest Inventory
-  Town Boundaries