



BHP Billiton Canada Inc.
#1102 4920-52nd Street
Yellowknife NT Canada X1A 3T1
Tel. 867 669 9292 Fax. 867 669 9293
bhpbilliton.com

**WATER SURVEILLANCE NETWORK PROGRAM (SNP)
MONTHLY REPORT FOR LICENCE
W2009L2-0001
OCTOBER
2011**

Submitted to:
South Mackenzie District
Indian and Northern Affairs Canada

Submitted by:
BHP Billiton Canada Inc.
Yellowknife, NT

November 30th, 2011

BHP Billiton Canada Inc.



BHP Billiton Canada Inc.
#1102 4920-52nd Street
Yellowknife NT Canada X1A 3T1
Tel 867 669 9292 Fax 867 669 9293
bhpbilliton.com

Via: E-mail

November 30th , 2011

South Mackenzie District
Indian and Northern Affairs Canada
#16 Yellowknife Airport
Yellowknife, NT
X1A 3T2

Attention: Mr. Jason Brennan
Resource Management Officer III

Dear Mr. Brennan:

**Re: Surveillance Network Program (SNP) Report for Water Licence
W2009L2-0001.**

As per Part "B" of the Surveillance Network Programs for the Water Licence W2009L2-0001, please find enclosed the Surveillance Network Program (SNP) Monthly Report for October, 2011.

We trust this report meets with your requirements. Please contact the undersigned at (867) 880-2232 should you have any questions or comments.

Yours sincerely,

BHP Billiton Canada Inc.

A handwritten signature in purple ink that reads "R. Ehlert" followed by a small box containing the word "FOR".

Keith McLean
Environment Superintendent - Operations
EKATI Diamond Mine

TABLE OF CONTENTS

1.0 Water Licence W2009L2-0001	1
1.1 SAMPLING SUMMARY FOR LICENCE W2009L2-0001	1
1.2 SECTION C. FLOW, VOLUME AND LAKE MONITORING REQUIREMENTS	3
<i>C (1.) Volume of water obtained from Grizzly, Little and Thinner Lakes:</i>	<i>3</i>
<i>C (2.)&(10) Lake level elevations above sea level:</i>	<i>3</i>
<i>C (3.) Volume of recycled water used:.....</i>	<i>3</i>
<i>C (4.) Volume of water or waste discharged to containment facilities:</i>	<i>3</i>
<i>C (5.) Volume of water or waste discharged from containment facilities:</i>	<i>4</i>
<i>C (6.) Quantities of mine water pumped from open pit and underground mines:</i>	<i>4</i>
<i>C (7.)&(8.) Quantity of sewage effluent and solids discharged/removed:</i>	<i>4</i>
<i>C (9.) Quantity of water dewatered from Sable and Beartooth Lakes:</i>	<i>4</i>
<i>C (11.) Quantity of waste deposited into Two Rock Sedimentation Pond:</i>	<i>5</i>
<i>C (12.) Quantity of effluent discharged from the Two Rock Sedimentation Pond:</i>	<i>5</i>
<i>C (13.) Quantities of mine water pumped from Beartooth, Pigeon, and Sable Pits:..</i>	<i>5</i>
1.3 SECTION D. OTHER MONITORING REQUIREMENTS	5
<i>D (4.) Quantity of Ore Produced:.....</i>	<i>5</i>
<i>D (5.) Quantity of Waste Rock and Course Processed Kimberlite Produced:</i>	<i>5</i>
<i>D (5.1) Waste Rock Summary</i>	<i>6</i>

LIST OF TABLES

TABLE 1. MV2009L2-0001 SAMPLING OVERVIEW..... 1

LIST OF FIGURES

FIGURE 1. SNP MONITORING STATIONS – KOALA & MISERY WATERSHEDS..... 2

APPENDICES

APPENDIX A. ANALYTICAL RESULTS FOR W2009L2-0001 WATER LICENCE..... 8

APPENDIX B. SNP MONITORING METEOROLOGICAL DATA 13

1.0 Water Licence W2009L2-0001

1.1 Sampling Summary for Licence W2009L2-0001

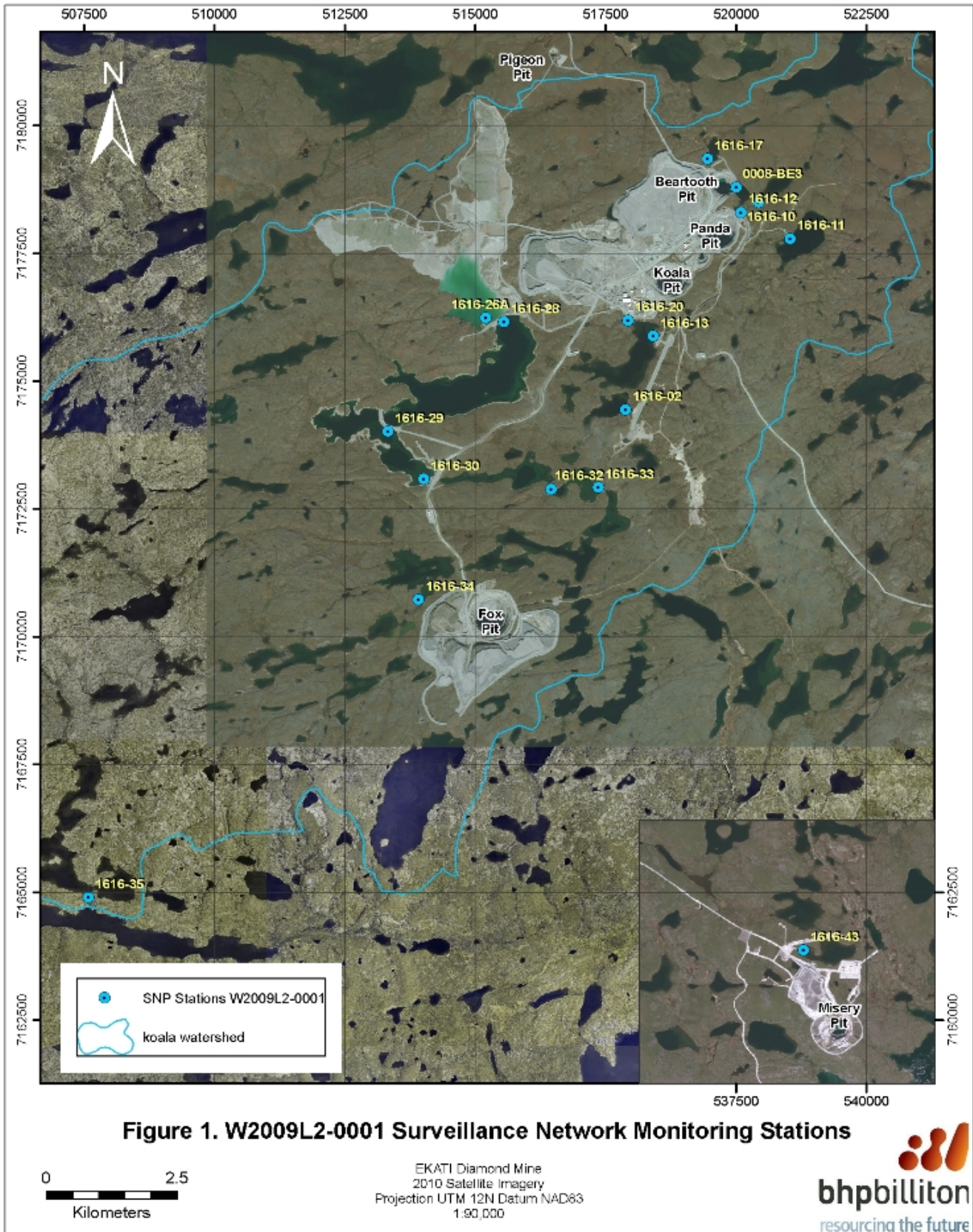
In accordance with the requirements listed in Water Licence W2009L2-0001, fifteen samples were collected during the month of October 2011. Please refer to Figure 1 – Surveillance Network Monitoring Stations for locations of sampling stations. Table 1 provides an overview of sampling activities for the month.

The pH results for the blanks may be less than the effluent quality requirements of pH 6.0. It is important to note that these samples are not representative of water quality being discharged to the receiving environment. These samples are made up of distilled, de-ionized water and do not represent natural conditions; therefore, the effluent water quality criteria do not apply.

All water samples collected were submitted for testing to our analytical laboratory ALS Environmental in Vancouver BC. All W2009L2-0001 sample results are shown in Appendix A. October 2011 Meteorological Weather Data is shown in Appendix B.

Table 1. W2009L2-0001 Sampling Overview

Lab Number	Station ID	Collection Date	Received Date	Comments
L1069412-1	1616-13	2-Oct-2011	20-Oct-2011	
L1069412-2	1616-12	2-Oct-2011	20-Oct-2011	
L1069414-1	1616-30	3-Oct-2011	20-Oct-2011	
L1069414-2	1616-11	3-Oct-2011	20-Oct-2011	
L1069414-3	1616-11	3-Oct-2011	20-Oct-2011	Field Blank for 1616-11
L1069414-4	1616-11	3-Oct-2011	20-Oct-2011	Travel Blank for 1616-11
L1069414-5	1616-11	3-Oct-2011	20-Oct-2011	Field Duplicate for 1616-11
L1070509-1	1616-30	10-Oct-2011	24-Oct-2011	
L1070509-2	1616-30	10-Oct-2011	24-Oct-2011	Field Blank for 1616-30
L1070509-3	1616-30	10-Oct-2011	24-Oct-2011	Travel Blank for 1616-30
L1070509-4	1616-30	10-Oct-2011	24-Oct-2011	Field Duplicate for 1616-30
L1073918-1	1616-13	16-Oct-2011	31-Oct-2011	
L1073917-1	1616-30	17-Oct-2011	26-Oct-2011	
L1077796-1	1616-30	24-Oct-2011	2-Nov-2011	
L1080236-1	1616-30	31-Oct-2011	10-Nov-2011	



1.2 Section C. Flow, Volume and Lake Monitoring Requirements

C (1.) Volume of water obtained from Grizzly, Little and Thinner Lakes:

Lake Name	Current Month (m ³)	Year to Date (m ³)
Grizzly Lake	7,056	75,202
Little Lake	0	0
Thinner lake	0	0

C (2.)&(10) Lake level elevations above sea level:

Lake Name	Lake Elevation (m)
Grizzly Lake	Frozen
Little Lake	Frozen
Upper/North Panda Lake	Frozen
Thinner Lake	Frozen
Cell E LLCF	447.882
King Pond	Frozen
Exeter Lake	Frozen
Ursula Lake	Frozen

C (3.) Volume of recycled water used:

	Source	Current Month (m ³)	Year to Date (m ³)
Process Plant	LLCF	372,476	3,793,664
Sample Plant	Not In Use		

C (4.) Volume of water or waste discharged to containment facilities:

Location Name	Current Month (m ³)	Year to Date (m ³)
Into LLCF		
Fine Processed Kimberlite Slurry	496,016	4,935,427
Mine Water	88,225	655,090
Other Wastes*	2,753	22,713
Into King Pond		
Mine Water	33,748	286,790
Other Wastes **	0	243,770
Phase 1		
Not in use		
Into Beartooth Pit		
Mine Water	87,829	516,634

*Other wastes include camp sumps not associated with mine water.

**Other wastes include Waste Rock Dam & Desperation Pond.

C (5.) Volume of water or waste discharged from containment facilities:

Location Name	Current Month (m ³)	Year to Date (m ³)
From LLCF		
To Leslie Lake	1,305,732	7,428,863
For Road Watering	0	74,240
For Other locations	0	80
Koala South Sump for Roads	0	240
From King Pond		
To Cujo Lake	0	235,463
For Road Watering	0	0
From Phase 1		
Not in use		

C (6.) Quantities of mine water pumped from open pit and underground mines:

Location Name	Current Month (m ³)	Year to Date (m ³)
Misery Open Pit	33,748	286,790
Fox Open Pit	71,397	461,243
Koala Open Pit	16,826***	144,224
Panda Open Pit	****	****
Koala North Open Pit and Underground	2,981	22,080
Koala Underground	25,117***	296,076
Panda Underground	74,691	506,918

Note: *** estimated quantities based on previous flow rates. Quantities of underground mine water are recycled for use in the underground service water system. ****Volume discrepancies noted for current Month/Year to Date and will be reported in December Surveillance Network Program Report.

C (7.)&(8.) Quantity of sewage effluent and solids discharged/removed:

Location Name	Current Month (m ³)		Year to Date (m ³)	
	liquids	solids	liquids	solids
From Sewage treatment facility	7,052	9.08	74,757	82
Pigeon Lake	0	0	0	0
Sable Lake	0	0	0	0

Note: No development exists for Pigeon and Sable Lakes.

C (9.) Quantity of water dewatered from Sable and Beartooth Lakes:

Location Name	Current Month (m ³)	Year to Date (m ³)
Sable Lake	0	0
Beartooth Lake	0	0

C (11.) Quantity of waste deposited into Two Rock Sedimentation Pond:

Location Name	Current Month (m ³)	Year to Date (m ³)
Two Rock	0	0

Note: Facility does not exist; therefore there is no deposition to date.

C (12.) Quantity of effluent discharged from the Two Rock Sedimentation Pond:

Location Name	Current Month (m ³)	Year to Date (m ³)
Two Rock	0	0

Note: Facility does not exist; therefore there is no deposition to date.

C (13.) Quantities of mine water pumped from Beartooth, Pigeon, and Sable Pits:

Location Name	Current Month (m ³)	Year to Date (m ³)
Beartooth Pit	0	0
Pigeon Pit	0	0
Sable Pit	0	0

Note: Pigeon and Sable Pits do not yet exist therefore no pumping to date.

1.3 Section D. Other Monitoring Requirements

D (1.), (2.)& (3.):

Refer to SNP Monitoring Meteorological Data Appendix B.

D (4.) Quantity of Ore Produced:

Parameter	Current Month (t)	Year to Date (t)
Ore processed	411,583	3,913,101

Note: Quantity reported represents all operating open pit and underground mines.

D (5.) Quantity of Waste Rock and Course Processed Kimberlite Produced:

Parameter	Current Month (t)	Year to Date (t)
Waste rock produced	12,000	232,000
Course processed kimberlite	261,255	2,487,423

Note: Quantity of course processed kimberlite reported represents all operating open pit and underground mines.
 Quantity of waste rock reported represents all operating open pit and underground mines.

D (5.1) Waste Rock Summary

Origin	Destination			Coarse Rejects WRP	
	Fox WRP	Panda/Koala WRP	Pigeon WRP		
Fox Pit	0	0	0	0	
Pigeon	0	0	0	0	
Koala Underground	0	9,000	0	0	
Koala North Underground	0	3,000		0	
Panda Underground	0	0	0	0	
TOTAL	0	12,000	0	0	12,000

Total Waste Rock - All Locations

This table summarizes all waste types from all active pits and underground mines governed under Type A Water Licence MV2009L2-0001. WRP = Waste Rock Pile

Appendix A
Analytical Results for W2009L2-0001 Water Licence

Freshwater intake from Grizzly Lake Pumphouse.

1616-11					
Collect Date/Time		10/3/2011 16:01	10/3/2011 16:02	10/3/2011 16:06	10/3/2011 16:05
Sample No.		L1069414-2	L1069414-3	L1069414-4	L1069414-5
Sample Class		M	FB	TB	F1
Air Temperature	Deg C	-0.3	-0.3	-0.3	-0.3
Weather	Unitless	Cloudy	Cloudy	Cloudy	Cloudy
Wind Direction	Degree	210	210	210	210
Wind Speed	km/h	20	20	20	20
Field pH	pH	7.90	*NR	*NR	7.87
Field Conductivity	uS/cm	14.7	*NR	*NR	13.0
Field Temperature	Deg C	14.6	*NR	*NR	14.6
pH	pH	6.69	5.60	5.69	6.65
Alkalinity	mg/L	*NR	*NR	*NR	*NR
Conductivity	uS/cm	*NR	*NR	*NR	*NR
Total Hardness	mg/L	*NR	*NR	*NR	*NR
Turbidity	NTU	*NR	*NR	*NR	*NR
Ammonia-N	mg/L	<0.0050	<0.0050	<0.0050	<0.0050
Total Carbon	mg/L	*NR	*NR	*NR	*NR
Total Organic Carbon	mg/L	*NR	*NR	*NR	*NR
Total Phosphorus	mg/L	*NR	*NR	*NR	*NR
Total Phosphate	mg/L	*NR	*NR	*NR	*NR
Orthophosphate	mg/L	*NR	*NR	*NR	*NR
Nitrate + Nitrite	mg/L	*NR	*NR	*NR	*NR
Sulphate	mg/L	*NR	*NR	*NR	*NR
Chloride	mg/L	*NR	*NR	*NR	*NR
Nitrate-N	mg/L	*NR	*NR	*NR	*NR
Total Calcium	mg/L	*NR	*NR	*NR	*NR
Total Magnesium	mg/L	*NR	*NR	*NR	*NR
Total Sodium	mg/L	*NR	*NR	*NR	*NR
Total Potassium	mg/L	*NR	*NR	*NR	*NR
Total Aluminum	mg/L	*NR	*NR	*NR	*NR
Total Arsenic	mg/L	*NR	*NR	*NR	*NR
Total Barium	mg/L	*NR	*NR	*NR	*NR
Total Boron	mg/L	*NR	*NR	*NR	*NR
Total Cadmium	mg/L	*NR	*NR	*NR	*NR
Total Chromium	mg/L	*NR	*NR	*NR	*NR
Total Copper	mg/L	*NR	*NR	*NR	*NR
Total Iron	mg/L	*NR	*NR	*NR	*NR
Total Lead	mg/L	*NR	*NR	*NR	*NR
Total Manganese	mg/L	*NR	*NR	*NR	*NR
Total Molybdenum	mg/L	*NR	*NR	*NR	*NR
Total Nickel	mg/L	*NR	*NR	*NR	*NR
Total Selenium	mg/L	*NR	*NR	*NR	*NR
Total Strontium	mg/L	*NR	*NR	*NR	*NR
Total Uranium	mg/L	*NR	*NR	*NR	*NR
Total Zinc	mg/L	*NR	*NR	*NR	*NR
Total Suspended Solids	mg/L	<3.0	<3.0	<3.0	4.7
Oil & Grease	mg/L	*NR	*NR	*NR	*NR
BTEX	mg/L	*NR	*NR	*NR	*NR
Total Petroleum Hydrocarbons	mg/L	*NR	*NR	*NR	*NR

Note: *NR= Not Required M=Monitoring Sample F1=Duplicate Sample FB=Field Blank TB=Travel Blank

North Panda Lake adjacent to Panda Lake Dam.

1616-12		
Collect Date/Time		10/2/2011 16:42
Sample No.		L1069412-2
Sample Class		M
Air Temperature	Deg C	-3
Weather	Unitless	Cloudy
Wind Direction	Degree	23
Wind Speed	km/h	22
Field pH	pH	7.65
Field Conductivity	uS/cm	22.3
Field Temperature	Deg C	1.5
pH	pH	6.68
Alkalinity	mg/L	*NR
Conductivity	uS/cm	*NR
Total Hardness	mg/L	*NR
Turbidity	NTU	1.24
Ammonia-N	mg/L	*NR
Total Carbon	mg/L	*NR
Total Organic Carbon	mg/L	*NR
Total Phosphorus	mg/L	*NR
Total Phosphate	mg/L	*NR
Orthophosphate	mg/L	*NR
Nitrate + Nitrite	mg/L	*NR
Sulphate	mg/L	*NR
Chloride	mg/L	*NR
Nitrate-N	mg/L	*NR
Total Calcium	mg/L	*NR
Total Magnesium	mg/L	*NR
Total Sodium	mg/L	*NR
Total Potassium	mg/L	*NR
Total Aluminum	mg/L	*NR
Total Arsenic	mg/L	*NR
Total Barium	mg/L	*NR
Total Boron	mg/L	*NR
Total Cadmium	mg/L	*NR
Total Chromium	mg/L	*NR
Total Copper	mg/L	*NR
Total Iron	mg/L	*NR
Total Lead	mg/L	*NR
Total Manganese	mg/L	*NR
Total Molybdenum	mg/L	*NR
Total Nickel	mg/L	*NR
Total Selenium	mg/L	*NR
Total Strontium	mg/L	*NR
Total Uranium	mg/L	*NR
Total Zinc	mg/L	*NR
Total Suspended Solids	mg/L	<3.0
Oil & Grease	mg/L	*NR
BTEX	mg/L	*NR
Total Petroleum Hydrocarbons	mg/L	*NR

Note: *NR= Not Required M=Monitoring Sample F1=Duplicate Sample FB=Field Blank TB=Travel Blank

Panda Diversion Channel Prior to entering Kodiak Lake.

1616-13			
Collect Date/Time		10/2/2011 17:26	10/16/2011 13:45
Sample No.		L1069412-1	L1073918-1
Sample Class		M	M
Air Temperature	Deg C	-3	-2.2
Weather	Unitless	Cloudy	cloudy
Wind Direction	Degree	23	12
Wind Speed	km/h	22	13
Field pH	pH	7.15	8.39
Field Conductivity	uS/cm	23.4	22.4
Field Temperature	Deg C	1.9	1.1
pH	pH	7.09	6.89
Alkalinity	mg/L	4.9	*NR
Conductivity	uS/cm	21.6	*NR
Total Hardness	mg/L	7.85	8.20
Turbidity	NTU	1.67	*NR
Ammonia-N	mg/L	<0.0050	*NR
Total Carbon	mg/L	6.05	*NR
Total Organic Carbon	mg/L	6.37	*NR
Total Phosphorus	mg/L	0.0068	*NR
Total Phosphate	mg/L	0.0068	*NR
Orthophosphate	mg/L	<0.0010	*NR
Nitrate + Nitrite	mg/L	0.0670	*NR
Sulphate	mg/L	3.85	*NR
Chloride	mg/L	<0.50	*NR
Nitrate-N	mg/L	0.0670	*NR
Total Calcium	mg/L	1.41	1.44
Total Magnesium	mg/L	1.08	1.12
Total Sodium	mg/L	<2.0	<2.0
Total Potassium	mg/L	<2.0	<2.0
Total Aluminum	mg/L	0.124	0.103
Total Arsenic	mg/L	0.00025	0.00024
Total Barium	mg/L	0.00681	0.00636
Total Boron	mg/L	<0.010	<0.010
Total Cadmium	mg/L	<0.000010	<0.000010
Total Chromium	mg/L	<0.00050	<0.00050
Total Copper	mg/L	0.00292	0.00273
Total Iron	mg/L	0.152	0.126
Total Lead	mg/L	<0.000050	<0.000050
Total Manganese	mg/L	0.00584	0.00520
Total Molybdenum	mg/L	0.000084	0.000081
Total Nickel	mg/L	0.00192	0.00175
Total Selenium	mg/L	<0.00010	<0.00010
Total Strontium	mg/L	0.0110	0.0108
Total Uranium	mg/L	0.000208	0.000187
Total Zinc	mg/L	0.0046	0.0062
Total Suspended Solids	mg/L	3.0	<3.0
Oil & Grease	mg/L	<5.0	*NR
BTEX	mg/L	0.002250000	*NR
Total Petroleum Hydrocarbons	mg/L	<0.25	*NR

Note: *NR= Not Required M=Monitoring Sample F1=Duplicate Sample FB=Field Blank TB=Travel Blank

Long Lake Containment Facility, Cell E upstream of decant structure to Leslie Lake. Point of Compliance.

1616-30											
Collect Date/Time		10/3/2011 15:21	10/10/2011 13:31	10/10/2011 13:30	10/10/2011 13:32	10/10/2011 14:00	10/17/2011 15:00	10/24/2011 16:05	10/31/2011 15:20	13	13
Sample No.		L1069414-1	L1070509-2	L1070509-1	L1070509-3	L1070509-4	L1073917-1	L1077796-1	L1080236-1	- W2009L2-0001	- W2009L2-0001
Sample Class		M	FB	M	TB	F1	M	M	M	Grab	Avg
Air Temperature	Deg C	-0.2	-4.2	-4.2	-4.2	-4.2	-2.9	-7.2	-1.3		
Weather	Unitless	Cloudy	cloudy	cloudy	cloudy	cloudy	Cloudy	Cloudy	Overcast		
Wind Direction	Degree	230	100	100	100	100	14	23	34		
Wind Speed	km/h	18.5	33	33	33	33	30	11	15		
Field pH	pH	8.07	*NR	8.64	*NR	8.64	8.18	8.39	8.11		
Field Conductivity	uS/cm	813.4	*Nr	838	*NR	838	852.8	*ND	809.7		
Field Temperature	Deg C	3.9	*NR	2.3	*NR	2.3	1.8	0.3	0.3		
pH	pH	7.83	5.61	7.91	5.74	7.91	7.92	7.89	7.83	6.0-9.0	6.0-9.0
Alkalinity	mg/L	42.3	<2.0	44.5	<2.0	44.4	44.8	45.7	44.1		
Conductivity	uS/cm	803	<2.0	825	<2.0	825	862	837	854		
Total Hardness	mg/L	147	<0.50	151	<0.50	145	153	157	155		
Turbidity	NTU	1.32	0.20	1.57	<0.10	1.31	1.10	0.85	0.73		
Ammonia-N	mg/L	<0.0050	<0.0050	<0.0050	0.0159	<0.0050	<0.0050	<0.0050	0.0065	4	2
Total Carbon	mg/L	13.4	<0.50	13.5	<0.50	13.7	13.0	14.1	14.5		
Total Organic Carbon	mg/L	5.19	<0.50	4.92	<0.50	4.93	4.89	4.84	4.66		
Total Phosphorus	mg/L	0.0067	<0.0020	0.0067	<0.0020	0.0068	0.0066	0.0103	0.0063		
Total Phosphate	mg/L	0.0067	<0.0020	0.0067	<0.0020	0.0068	0.0066	0.0103	0.0063		
Orthophosphate	mg/L	<0.0010	<0.0010	<0.0010	<0.0010	<0.0010	<0.0010	<0.0010	<0.0010		
Nitrate + Nitrite	mg/L	3.34	<0.0051	3.49	<0.0051	3.51	3.65	3.93	4.15		
Sulphate	mg/L	117	<0.50	121	<0.50	120	127	127	143		
Chloride	mg/L	133	<0.50	138	<0.50	139	142	142	161		
Nitrate-N	mg/L	3.33	<0.0050	3.47	<0.0050	3.48	3.63	3.92	4.14		
Total Calcium	mg/L	34.3	<0.050	34.7	<0.050	33.5	35.5	35.5	35.8		
Total Magnesium	mg/L	14.9	<0.10	15.6	<0.10	15.0	15.5	16.6	15.9		
Total Sodium	mg/L	88.4	<2.0	94.4	<2.0	90.7	93.7	102	97.5		
Total Potassium	mg/L	27.2	<2.0	28.0	<2.0	27.0	28.8	30.4	29.4		
Total Aluminium	mg/L	0.0522	<0.0030	0.0391	<0.0030	0.0387	0.0333	0.0260	0.0239	2	1
Total Arsenic	mg/L	0.00056	<0.00010	0.00054	<0.00010	0.00052	0.00059	0.00060	0.00060	1	0.5
Total Barium	mg/L	0.0734	<0.000050	0.0746	<0.000050	0.0720	0.0765	0.0777	0.0794		
Total Boron	mg/L	0.026	<0.010	0.028	<0.010	0.027	0.027	0.026	0.033		
Total Cadmium	mg/L	0.000033	<0.000010	0.000023	<0.000010	<0.000040	<0.000040	<0.000040	<0.000040		
Total Chromium	mg/L	<0.00050	<0.00050	<0.00050	<0.00050	<0.00050	<0.00050	<0.00050	<0.00050		
Total Copper	mg/L	0.00138	<0.00050	0.00129	<0.00050	0.00135	0.00138	0.00126	0.00136	0.2	0.1
Total Iron	mg/L	0.041	<0.030	0.035	<0.030	0.031	<0.030	<0.030	<0.030		
Total Lead	mg/L	<0.000050	<0.000050	<0.000050	<0.000050	<0.000050	<0.000050	<0.000050	<0.000050		
Total Manganese	mg/L	0.00478	<0.000050	0.00401	<0.000050	0.00405	0.00363	0.00251	0.00245		
Total Molybdenum	mg/L	0.0796	<0.000050	0.0830	<0.000050	0.0809	0.0875	0.0826	0.0851		
Total Nickel	mg/L	0.00417	<0.00050	0.00444	<0.00050	0.00430	0.00436	0.00430	0.00422	0.3	0.15
Total Selenium	mg/L	0.00022	<0.00010	0.00024	<0.00010	0.00023	0.00025	0.00026	0.00024		
Total Strontium	mg/L	0.707	<0.00010	0.703	<0.00010	0.685	0.711	0.717	0.730		
Total Uranium	mg/L	0.000570	<0.000010	0.000588	<0.000010	0.000584	0.000626	0.000576	0.000585		
Total Zinc	mg/L	<0.0030	<0.0030	<0.0030	<0.0030	<0.0030	<0.0030	<0.0030	<0.0030		
Total Suspended Solids	mg/L	<3.0	<3.0	<3.0	<3.0	<3.0	<3.0	<3.0	3.0	25	15
Oil & Grease	mg/L	<5.0	<5.0	<5.0	<5.0	<5.0	<5.0	<5.0	<5.0		
BTEX	mg/L	0.002250000	0.002250000	0.002250000	0.002250000	0.002250000	0.002250000	0.002250000	0.002250000		
Total Petroleum Hydrocarbons	mg/L	<0.25	<0.25	<0.25	<0.25	<0.25	<0.25	<0.25	<0.25	5	3
Bio-Oxy-Demand	mg/L	*NR	*NR	*NR	*NR	*NR	*NR	*NR	*NR	40	40

Note: *NR= Not Required *ND= No Data M=Monitoring Sample F1=Duplicate Sample FB=Field Blank TB=Travel Blank

Appendix B
SNP MONITORING METEOROLOGICAL DATA

	Hourly Avg. Temp.	Hourly Avg. Rel. Humidity	Hourly Wind Speed	Hourly Wind Direction	Hourly Wind S.D.	Hourly Rainfall	2 Minute Wind Direction	2 Minute Wind Speed	2 Minute Wind S.D.	10 Minute Wind Direction	10 Minute Wind Speed	10 Minute Wind S.D.
Koala Hourly Array	Degrees C	%	m/s	Degrees	Degrees	mm	Degrees	m/s	Degrees	Degrees	m/s	Degrees
Collect Date/Time												
10/1/11 0:00	0.379	100.5	11.37	311.8	4.617	0.508	312.4	11.83	3.863	314	11.41	4.45
10/1/11 1:00	0.18	100.5	11.62	318.6	5.18	0.254	324.1	10.34	4.913	323	11.42	5.809
10/1/11 2:00	-0.186	100	10.66	326.6	5.546	0	327.1	11.14	5.191	328.8	11.03	5.646
10/1/11 3:00	-0.921	98.2	11.75	332	5.03	0	336.3	11.7	6.032	335.4	12.79	5.102
10/1/11 4:00	-1.767	97.5	12.28	338.9	5.798	0	340.1	12.16	5.296	339.1	12.59	5.813
10/1/11 5:00	-2.106	95.9	13.6	341.5	6.124	0	345.5	12.35	7.32	344.9	12.19	6.804
10/1/11 6:00	-2.334	94.4	14.24	345.2	5.53	0	349	14.52	5.105	346.9	15.49	5.091
10/1/11 7:00	-2.729	92	15.26	345.2	6.587	0	346.9	13.95	18.73	345	14.98	10.21
10/1/11 8:00	-3.123	90.6	15.65	346.8	5.705	0	345.4	15.49	4.201	347.8	15.84	5.407
10/1/11 9:00	-3.2	90.6	15.1	349.6	8.63	0	349.4	15.53	5.723	354.2	15.12	10.57
10/1/11 10:00	-3.113	90.6	13.2	355.7	10.13	0	356.8	13.6	7.01	356.9	13.1	7.59
10/1/11 11:00	-3.23	90.6	11.91	356.4	10.9	0	353.8	12.15	5.619	355.7	11.77	6.794
10/1/11 12:00	-3.72	90.1	11.22	0.064	10.89	0	352.5	11.6	5.545	354.7	11.17	11.76
10/1/11 13:00	-3.616	87.4	11.57	351.6	8.43	0	355.8	10.49	7	356.3	10.82	7.53
10/1/11 14:00	-3.063	87	9.38	2.752	9.08	0	1.133	10.85	7.25	7.62	8.98	9.76
10/1/11 15:00	-3.058	83.8	8.67	6.077	9.19	0	355.4	8.7	6.355	1.423	8.18	10.78
10/1/11 16:00	-3.109	84.3	7.15	10.14	10	0	30.75	6.443	10.43	25.18	6.383	10.63
10/1/11 17:00	-3.085	86.7	6.663	21.24	7.71	0	27.96	5.965	2.906	20.55	6.423	7.66
10/1/11 18:00	-3.447	87.5	4.942	20.34	10.09	0	16.15	4.762	6.497	12.51	4.978	8.05
10/1/11 19:00	-3.661	86.4	4.657	9.79	11.23	0	0.339	4.851	7.55	4.731	4.242	9.25
10/1/11 20:00	-4.096	87.6	4.162	12.08	8.2	0	12.42	3.412	3.862	6.753	3.566	7.96
10/1/11 21:00	-4.013	90	3.406	352.2	7.82	0	343.6	2.618	5.424	349.2	2.244	7.76
10/1/11 22:00	-3.841	89.9	1.636	338.2	7.73	0	322.2	1.236	5.461	323.7	1.151	5.089
10/1/11 23:00	-3.807	91	0.931	266.7	9.71	0	243.9	0.566	1.387	249.4	0.711	3.893
10/2/11 0:00	-3.613	90.6	2.072	133.8	18.12	0	130.5	2.657	15.14	117.8	3.136	11.32
10/2/11 1:00	-4.016	92.6	2.497	117.6	7.35	0	109.3	3.628	2.881	114.3	3.196	5.974
10/2/11 2:00	-3.025	86.3	3.995	116.3	7.71	0	117.9	4.053	7.27	118.2	3.822	8
10/2/11 3:00	-3.069	86.2	4.21	121.4	9.22	0	117.5	3.487	6.398	133.7	3.83	12.44
10/2/11 4:00	-3.451	89.3	4.169	118	6.599	0	110.4	3.883	5.263	116.3	4.348	7.03
10/2/11 5:00	-3.535	90.5	4.85	137.7	8.54	0	159.8	6.65	4.297	148.9	5.585	8.79
10/2/11 6:00	-3.297	90.6	6.274	154.8	7.32	0	160.3	6.521	6.808	156.9	6.521	7.69
10/2/11 7:00	-3.211	92.4	6.59	157.8	6.594	0	157.7	7.42	3.852	159.8	6.603	6.245
10/2/11 8:00	-3.045	93.8	5.537	174.9	6.948	0	179.8	5.019	4.489	177.8	5.061	4.263
10/2/11 9:00	-2.597	95.8	5.212	175.1	6.099	0	178.6	4.811	6.23	175.1	4.808	6.857
10/2/11 10:00	-1.567	95.1	4.813	177.6	6.547	0	182	4.873	4.618	183.4	4.703	5.198
10/2/11 11:00	-0.669	97.3	5.7	167.3	6.149	0	156.5	7.3	3.898	157.5	6.699	6.201
10/2/11 12:00	0.323	94.5	6.579	156.5	5.815	0.508	155.9	7.11	3.325	158.2	6.701	5.545
10/2/11 13:00	0.763	89.7	7.27	153.8	7.37	1.016	154.8	6.885	4.923	151.8	6.408	5.76
10/2/11 14:00	0.893	91.4	6.618	155.2	7.76	0.508	146.7	7.01	4.699	155.4	6.893	7.57
10/2/11 15:00	1.044	92.2	6.35	148.9	7.29	0	141.5	7.62	4.921	150.4	6.661	7.31
10/2/11 16:00	1.468	90.3	5.927	144.4	7.8	0	143.3	4.801	7.72	144.7	5.196	8.5
10/2/11 17:00	1.598	88.8	4.906	138.7	8.55	0	131.3	3.365	9.31	134.9	4.559	7.64
10/2/11 18:00	1.645	89.8	4.016	163.2	10.37	0	169.1	4.365	7.14	173.2	4.207	9.26
10/2/11 19:00	1.741	89.8	5.314	161.8	7.48	0	153.5	6.172	6.504	164.1	5.679	8.59
10/2/11 20:00	1.6	90.3	5.627	164.2	6.902	0	160.4	6.797	4.361	163.3	7.49	5.342
10/2/11 21:00	1.576	89.4	5.699	157.5	6.918	0	157.2	4.974	7.53	156.6	4.986	6.713
10/2/11 22:00	1.519	90.5	5.355	160.1	7.01	0	153.8	6.005	4.817	154.1	5.462	4.926
10/2/11 23:00	1.399	90.3	5.921	156.4	6.703	0	155	5.494	5.256	151.5	5.316	7.02
10/3/11 0:00	1.124	90.6	6.49	154.1	6.702	0	142.6	5.154	5.701	145.7	5.979	5.024
10/3/11 1:00	0.854	90.9	6.044	151.2	6.997	0	152	5.512	9.14	151.7	6.296	5.829
10/3/11 2:00	0.508	91.7	5.815	151.7	7.87	0	153.9	6.571	6.764	156.8	6.242	6.196
10/3/11 3:00	0.045	94.5	6.091	152.8	6.612	0	152.2	5.172	5.517	151.2	5.619	5.325
10/3/11 4:00	-0.484	96.6	6.427	153.8	8.17	0	149.2	6.791	6.129	147.6	6.825	7.84
10/3/11 5:00	-0.56	95.9	6.248	148.7	8.49	0	153.7	6.458	4.048	148.7	6.587	6.82
10/3/11 6:00	-0.495	96.1	5.173	138.5	8.23	0	134.5	5.21	4.694	140.1	5.465	10.14
10/3/11 7:00	-0.451	96	5.066	141.1	9.87	0	145.3	5.933	6.253	150.5	6.077	6.501
10/3/11 8:00	-0.601	96.7	4.423	125.4	7.71	0	115.5	3.617	5.923	122.6	4.219	8.48
10/3/11 9:00	-0.574	96.8	4.436	142.7	11.73	0	159	4.992	6.794	142.8	4.498	16.39
10/3/11 10:00	-0.79	97.7	4.545	152.8	11.96	0	173.1	4.438	5.307	148.8	4.317	14.57
10/3/11 11:00	-0.734	98.1	4.758	159	9.55	0	168.9	4.513	7.55	170.8	4.597	6.833
10/3/11 12:00	-0.565	96.5	5.245	164.7	11.35	0	166.2	5.321	2.83	171	5.535	5.967
10/3/11 13:00	0.158	94.3	4.387	169.7	13.62	0	171.9	5.637	9.34	180.8	4.572	10.15
10/3/11 14:00	0.091	94.3	4.36	184.5	11.9	0	179.8	5.352	9.26	185.1	5.164	10.29
10/3/11 15:00	0.781	92	4.846	193.6	11.01	0	202.8	5.156	7.98	202.3	5.007	7.06
10/3/11 16:00	1.223	90.9	4.892	197.1	12.37	0	207.8	4.885	5.073	207.2	5.205	5.485
10/3/11 17:00	1.174	91.9	5.313	186.3	7.88	0	184.1	5.32	6.861	186.2	5.375	6.109
10/3/11 18:00	1.033	94.3	4.453	194.4	7.56	0	197.5	3.63	4.363	198	3.821	5.035
10/3/11 19:00	0.107	97.2	3.08	226	6.133	0	249.1	3.028	4.915	242.8	2.999	5.662
10/3/11 20:00	-0.16	97.6	4.581	262.1	4.02	0	270.6	5.93	1.496	269.8	5.683	2.373
10/3/11 21:00	-0.498	97.3	6.136	274.9	3.064	0	273.7	6.023	3.165	274.5	6.302	3.322
10/3/11 22:00	-0.633	95.7	6.254	267.9	3.768	0	269.4	6.177	2.93	267.7	6.252	2.87
10/3/11 23:00	-0.403	94.7	5.904	264	4.601	0	256.4	5.952	4.398	260	6.045	5.119

	Hourly Avg. Temp.	Hourly Avg. Rel. Humidity	Hourly Wind Speed	Hourly Wind Direction	Hourly Wind S.D.	Hourly Rainfall	2 Minute Wind Direction	2 Minute Wind Speed	2 Minute Wind S.D.	10 Minute Wind Direction	10 Minute Wind Speed	10 Minute Wind S.D.
Koala Hourly Array	Degrees C	%	m/s	Degrees	Degrees	mm	Degrees	m/s	Degrees	Degrees	m/s	Degrees
Collect Date/Time												
10/4/11 0:00	0.128	95.5	5.87	247.6	5	0	243.5	6.275	3.502	243.7	6.268	4.264
10/4/11 1:00	0.132	95.3	5.998	249.6	3.833	0	253.1	6.118	3.088	253.4	5.943	3.703
10/4/11 2:00	-0.285	96.6	6.309	257.7	4.15	0	257	6.777	4.205	256.7	6.656	4.519
10/4/11 3:00	-0.338	96.4	6.779	261.1	4.006	0	261.3	6.38	4.223	261	6.65	4.181
10/4/11 4:00	-0.617	97	6.42	262.6	4.01	0	257.6	6.415	3.626	259.6	6.314	4.622
10/4/11 5:00	-0.491	97.3	6.74	259.7	4.728	0	256.7	7.08	5.448	257.8	7.22	5.217
10/4/11 6:00	-0.318	97.6	7.17	257.4	4.515	0	250.8	7.37	4.703	253.5	6.956	4.926
10/4/11 7:00	-0.459	98.6	7.42	260.7	4.259	0	268.3	7.85	3.899	268.3	7.76	3.579
10/4/11 8:00	0.108	99.1	8.97	252	5.434	0	246.1	10.59	5.756	243	10.62	5.086
10/4/11 9:00	0.311	100.2	9.91	243.8	5.179	0	245.4	9.07	4.434	244.6	9.24	4.722
10/4/11 10:00	0.778	100.2	9.5	244.5	5.125	0	246.3	9.75	5.182	246.2	9.25	5.303
10/4/11 11:00	1.097	99.5	9.4	249.5	5.336	0	250.2	9.38	3.049	252.2	9.42	4.992
10/4/11 12:00	1.204	99.9	8.57	257.1	5.689	0	260.9	8.05	5.589	256.9	8.16	6.675
10/4/11 13:00	1.327	100	8.68	257.7	6.287	1.016	258.1	8.69	5.071	259.4	8.78	5.458
10/4/11 14:00	1.53	99.4	8.55	258	5.875	1.524	259.6	8.33	5.61	255.9	8.41	5.546
10/4/11 15:00	1.89	98.7	8.94	248.8	6.026	0.762	246	10.29	6.335	246.5	9.18	5.758
10/4/11 16:00	1.976	98.4	9.83	244.5	5.405	0.508	242.5	10.11	3.859	242.9	9.71	4.688
10/4/11 17:00	2.172	99	8.33	236.8	5.739	0.762	232.6	7.91	5.392	232	7.85	5.639
10/4/11 18:00	2.45	99.4	7.68	235.4	5.759	0	235.7	6.313	6.933	237.7	6.609	5.81
10/4/11 19:00	2.668	99.3	7.13	228.9	6.059	0	222.3	7.52	4.673	223.1	7.63	4.476
10/4/11 20:00	2.952	98.8	7.05	221.8	5.53	0	219.7	6.805	4.741	220.1	7.11	4.667
10/4/11 21:00	3.033	99.7	6.444	216.7	5.846	0	207.2	5.912	7.16	208.6	5.825	6.358
10/4/11 22:00	3.212	100	5.417	210.7	5.483	0	213.6	5.123	4.747	212.4	4.99	5.154
10/4/11 23:00	3.315	100.1	4.579	209.2	5.972	0	205.5	4.361	5.239	205.8	4.538	5.024
10/5/11 0:00	3.453	100.1	4.232	198.9	5.847	0	189.4	3.287	6.956	192.2	3.444	6.74
10/5/11 1:00	3.427	100.1	2.934	196.5	6.469	0.254	199.2	2.075	6.615	197.5	2.316	6.288
10/5/11 2:00	3.312	100.2	1.58	185.5	9.2	0	173.7	1.885	4.561	182.4	1.74	7.47
10/5/11 3:00	3.194	100.2	1.622	182.3	6.302	0	170.2	1.131	7.05	174.9	1.138	7.34
10/5/11 4:00	3.1	100.2	1.079	203.7	8.62	0	248.5	1.422	6.488	240.9	1.387	8.62
10/5/11 5:00	2.974	100.2	1.43	199.5	9.2	0	165.7	1.116	1.467	164.9	1.254	1.876
10/5/11 6:00	3.09	100.2	1.544	135.7	8.61	0	122.2	2.445	3.074	124.9	2.301	4.941
10/5/11 7:00	2.954	100.2	2.244	118.6	3.454	0	109.3	2.243	2.942	112.9	2.112	2.948
10/5/11 8:00	3.202	100.3	3.074	94.3	6.367	0.254	93.2	3.831	5.148	90.2	3.717	5.189
10/5/11 9:00	3.475	100.3	4.125	90.4	5.091	0	89.2	3.947	4.554	86.8	4.184	4.639
10/5/11 10:00	3.686	100.4	3.299	97.5	5.839	0	113.8	2.21	5.363	110.2	2.479	4.781
10/5/11 11:00	3.857	100.3	2.931	111.6	5.539	0	113.9	3.449	5.101	112.2	3.399	4.99
10/5/11 12:00	4.34	100.4	3.28	116	7.54	0	102.1	5.704	5.543	104.2	4.423	9.74
10/5/11 13:00	4.885	100.3	5.592	97.6	6.353	0	101.1	6.136	4.57	100.5	5.747	5.176
10/5/11 14:00	4.809	99.8	5.736	99.1	7.35	0	102.7	6.161	4.54	104.6	5.345	6.05
10/5/11 15:00	4.644	97.3	5.279	93	6.472	0	81.5	4.596	4.524	84.6	4.886	5.231
10/5/11 16:00	4.797	92.6	4.606	92.6	7.33	0	114.6	3.63	3.768	109.7	3.636	5.98
10/5/11 17:00	4.583	93.6	3.996	117.3	4.794	0	116.1	4.415	3.016	118.4	4.218	4.104
10/5/11 18:00	4.332	93.4	4.826	112.2	6.088	0	129.4	4.012	4.338	124.7	4.001	6.015
10/5/11 19:00	3.6	95.1	4.202	123.4	4.689	0	128.8	3.958	3.461	128.6	3.971	3.734
10/5/11 20:00	2.556	98.3	4.062	125.2	5.362	0	114.7	4.592	3.859	117.8	4.84	4.887
10/5/11 21:00	2.016	98.1	4.232	109	5.288	0	111.9	3.486	1.965	110.9	3.127	4.99
10/5/11 22:00	1.445	96.2	4.429	90.5	5.822	0	85.1	2.81	2.299	85.9	3.33	3.84
10/5/11 23:00	0.396	96.1	2.716	98	3.618	0	105.4	1.789	2.806	105.4	1.878	3.807
10/6/11 0:00	0.035	96.4	2.046	126.2	6.032	0	126.8	2.655	3.82	131.8	2.764	5.387
10/6/11 1:00	-0.49	98.5	2.438	124.6	6.778	0	131.4	2.631	7.87	123.9	2.184	8.27
10/6/11 2:00	-0.471	99.7	2.463	124.3	6.453	0	120.7	1.893	5.691	117.5	2.038	6.944
10/6/11 3:00	-0.683	99.9	1.571	139.7	6.826	0	150.9	1.162	9.52	146.9	1.245	8.41
10/6/11 4:00	-0.43	99.2	1.357	143.1	10.02	0	153.6	1.35	6.532	147.6	0.968	12.55
10/6/11 5:00	-0.091	97.1	1.63	178.7	19.51	0	184.1	2.826	3.187	188.9	2.686	7.15
10/6/11 6:00	0.13	98.2	2.485	168.5	9.12	0	169.4	2.757	4.64	171.9	3.012	4.299
10/6/11 7:00	0.276	98.9	2.084	163	19.58	0	100.8	0.854	19.13	154.9	0.298	32.96
10/6/11 8:00	-0.662	99.9	2.501	181.8	14.95	0	191.9	4.511	4.667	194.1	3.561	10.38
10/6/11 9:00	-0.871	100.7	4.124	175.7	7.51	0	167.1	1.988	7.5	170.4	2.704	8.51
10/6/11 10:00	0.005	100.7	2.523	175.2	10.89	0	189.1	3.617	6.466	192.2	3.347	6.73
10/6/11 11:00	0.638	100.6	4.149	182.3	7.11	0	173.3	3.549	5.033	178.2	3.711	5.997
10/6/11 12:00	1.912	100.3	4.545	167.2	6.235	0	164.3	5.036	5.509	161.1	5.482	6.299
10/6/11 13:00	2.932	100.2	5.015	161.5	6.654	0	160.4	5.41	6.078	158	5.388	6.999
10/6/11 14:00	3.399	100.2	4.97	168.8	6.913	0	180.6	3.539	9.11	180.1	4.354	6.484
10/6/11 15:00	3.756	100.2	4.029	200.8	7.53	0	204.8	3.546	6.993	205.7	3.763	7.82
10/6/11 16:00	4.186	100.1	3.746	212.9	8.19	0	204	4.757	7.48	207.1	4.378	7.71
10/6/11 17:00	4.757	100	4.912	213	6.173	0	207.7	4.733	5.581	209.5	4.982	5.785
10/6/11 18:00	4.955	99.2	4.463	211.6	7.29	0	208.6	4.857	6.577	210.1	4.641	6.983
10/6/11 19:00	4.841	98.6	4.356	199.2	6.175	0	200.9	4.343	3.864	200.7	4.722	4.717
10/6/11 20:00	4.625	98.7	4.325	212.5	6.598	0	227.9	4.852	7.54	228.4	4.573	6.424
10/6/11 21:00	4.413	98.7	4.94	219.2	6.082	0	208.6	5.475	4.555	207.4	5.2	5.282
10/6/11 22:00	4.215	97.9	5.328	217.9	6.122	0	208.3	5.936	6.219	209.1	6.134	6.146
10/6/11 23:00	4.18	96.4	5.856	210	5.668	0	216.5	5.224	5.553	213.8	5.063	5.605

	Hourly Avg. Temp.	Hourly Avg. Rel. Humidity	Hourly Wind Speed	Hourly Wind Direction	Hourly Wind S.D.	Hourly Rainfall	2 Minute Wind Direction	2 Minute Wind Speed	2 Minute Wind S.D.	10 Minute Wind Direction	10 Minute Wind Speed	10 Minute Wind S.D.
Koala Hourly Array	Degrees C	%	m/s	Degrees	Degrees	mm	Degrees	m/s	Degrees	Degrees	m/s	Degrees
Collect Date/Time												
10/7/11 0:00	3.779	96.4	5.517	209.5	6.157	0	207.1	5.421	6.54	208.5	5.409	6.362
10/7/11 1:00	3.827	96.6	5.311	218.3	5.84	0	223.3	4.747	4.732	218.3	4.968	5.955
10/7/11 2:00	3.894	96.4	5.2	224.4	5.724	0	228.3	5.649	5.576	227.4	5.253	5.413
10/7/11 3:00	3.673	96.1	4.823	232.8	4.858	0	236.6	4.486	5.092	234.7	4.544	4.651
10/7/11 4:00	3.27	97.2	4.779	241.1	4.566	0	242.1	5.02	4.037	241.9	4.969	4.043
10/7/11 5:00	2.791	98	4.933	249.2	5.421	0	244.6	4.809	4.268	248.6	4.748	5.794
10/7/11 6:00	2.981	98.9	4.542	242.6	5.638	0	237.1	4.547	4.853	236.3	4.395	5.065
10/7/11 7:00	3.382	99.5	4.568	237	5.195	0	236.4	5.276	5.043	235.9	5.099	5.312
10/7/11 8:00	3.537	99.6	3.54	234.5	7.84	0	247.6	2.362	5.936	241.7	2.524	7.91
10/7/11 9:00	3.664	99.6	3.714	234.7	6.294	0	221	5.679	4.361	225.5	5.199	5.718
10/7/11 10:00	3.918	98.3	5.316	220	4.835	0	219.4	4.954	4.162	219.6	5.029	5.101
10/7/11 11:00	4.163	97.2	4.319	217.4	5.463	0	213.4	4.75	5.607	214	4.481	5.289
10/7/11 12:00	4.579	95.8	5.006	207.4	5.931	0	216.1	4.822	4.454	215	5.059	5.105
10/7/11 13:00	4.625	95.8	4.775	214	6.017	0	216.9	4.24	4.885	215	4.195	7.13
10/7/11 14:00	4.688	95.4	4.333	218.7	6.086	0	220.5	4.487	4.635	218.6	4.512	5.178
10/7/11 15:00	4.898	94.3	3.132	215.4	5.965	0.254	206.1	2.452	5.372	212	2.329	6.733
10/7/11 16:00	4.704	97.1	3.138	208.8	9.63	1.016	180.3	2.873	3.989	178.1	3.27	5.554
10/7/11 17:00	4.568	95.1	2.421	198.6	6.473	0.254	200	2.369	3.844	201.9	2.437	6.291
10/7/11 18:00	4.43	95.3	1.873	228.1	6.858	0.254	247.9	2.074	3.291	241.9	1.988	6.798
10/7/11 19:00	4.075	98.6	2.478	227.9	6.955	0.508	225.9	2.7	4.924	227.5	2.644	6.066
10/7/11 20:00	3.825	99.4	2.055	225.3	8.19	0.254	227.3	2.437	4.9	230.9	2.186	5.627
10/7/11 21:00	3.693	99.7	1.913	225.9	5.557	0.508	219.2	1.685	3.801	221.8	1.674	5.248
10/7/11 22:00	3.5	99.8	1.552	89.8	18.58	0.508	47.68	1.955	2.312	47.51	1.813	3.193
10/7/11 23:00	3.231	99.6	1.303	48.6	4.699	0.254	56.34	0.753	2.346	53.57	0.802	3.685
10/8/11 0:00	2.932	99.7	1.338	42.73	4.558	0.254	46.99	1.793	2.565	47.8	1.781	2.302
10/8/11 1:00	2.784	99.9	1.791	36.42	3.785	0.254	17.79	1.824	1.937	21.95	1.815	3.516
10/8/11 2:00	2.685	100	2.054	42.49	4.936	0	45.5	1.85	5.167	45.2	2.127	5.049
10/8/11 3:00	2.452	100	2.065	54.49	4.058	0	46.74	2.1	3.513	48.38	2.235	4.531
10/8/11 4:00	2.654	100.1	2.475	47.06	4.687	0	47.06	2.821	2.258	45.46	2.758	3.135
10/8/11 5:00	2.648	100.1	2.354	53.4	3.986	0.254	56.69	2.454	5.062	58.36	2.557	4.361
10/8/11 6:00	2.799	100.2	2.836	58.19	6.231	0	43.81	4.55	9.37	50.05	3.454	8.85
10/8/11 7:00	2.19	100.1	7.38	38.19	6.114	0	37.16	7.04	6.348	36.03	7.44	6.078
10/8/11 8:00	1.17	99.5	8	35.83	6.067	0	36.38	7.91	5.62	35.79	8.05	5.305
10/8/11 9:00	0.845	96.7	8.69	28.05	6.795	0	20.99	8.59	5.522	22.56	8.95	7.06
10/8/11 10:00	0.381	97.3	7.92	28.44	8.06	0	26.84	9.33	5.903	28.97	8.64	6.558
10/8/11 11:00	0.139	95.2	9.01	36.17	6.179	0	33.52	8.53	5.834	37.77	8.03	6.227
10/8/11 12:00	-0.216	91.2	8.94	38.16	6.565	0	39.59	8.88	4.772	37.47	8.94	6.478
10/8/11 13:00	-0.587	88.2	8.8	33.76	7.31	0	32.92	8.07	5.62	32.48	8.63	7.04
10/8/11 14:00	-0.261	86.2	8.03	44.37	8.14	0	63.3	9.96	4.938	52.16	8.88	9.79
10/8/11 15:00	-0.449	84	9.08	51.64	7.97	0	61.29	8.29	5.68	55.98	8.76	7.77
10/8/11 16:00	-0.692	81.8	9.01	57.53	7.91	0	58.7	8.78	7.72	54.31	9.17	7.21
10/8/11 17:00	-1.025	83.7	7.97	51.35	8.81	0	50.04	7.08	5	50.93	7.04	7.88
10/8/11 18:00	-0.737	80.7	7.15	53.94	7.27	0	54.41	7	5.381	53.83	7.08	7.74
10/8/11 19:00	-0.367	80.5	6.906	65.09	7.84	0	53.46	8.05	5.825	65.94	8.23	9.18
10/8/11 20:00	-0.773	86.6	5.976	45.45	7.22	0	45.62	5.097	4.435	43.39	5.276	5.279
10/8/11 21:00	-0.911	91.4	5.687	47.16	6.762	0	38.78	6.268	5.59	37.34	6.371	7.32
10/8/11 22:00	-1.086	94	6.373	32.54	7.42	0	35.3	6.074	7.08	33.16	5.993	7.06
10/8/11 23:00	-1.138	93.9	6.568	33.92	6.447	0	30.91	6.539	5.798	36.6	6.783	6.875
10/9/11 0:00	-1.884	93	7.05	17.94	7.55	0	14.93	7.03	6.7	19	6.969	7.15
10/9/11 1:00	-2.504	91.1	6.431	14.76	8.48	0	7.99	6.203	21.87	6.556	6.153	11.4
10/9/11 2:00	-3.16	89.1	6.456	19.32	8.43	0	8.87	3.781	9.63	14.39	5.286	11.04
10/9/11 3:00	-3.305	89.6	5.01	5.148	9.72	0	1.125	3.497	8.87	0.562	4.049	9.19
10/9/11 4:00	-3.325	88.2	4.646	21.92	12.09	0	354.8	5.422	5.903	10.07	5.372	13.42
10/9/11 5:00	-3.662	88	4.99	3.07	10.06	0	355.8	4.637	6.071	353.6	5.097	7.4
10/9/11 6:00	-3.809	89	4.621	20.81	9.39	0	23.26	4.508	11.87	34.86	3.95	10.74
10/9/11 7:00	-3.849	90.6	4.165	13.21	12.07	0	28.34	4.182	8.26	25.8	4.324	8.64
10/9/11 8:00	-3.89	91	3.26	12.76	11.64	0	6.809	4.18	8.54	7.36	4.337	9.01
10/9/11 9:00	-3.995	91.6	4.536	327.9	10.84	0	306.5	4.043	7.59	325.5	3.914	15.68
10/9/11 10:00	-4.1	87.7	4.131	316.4	10.85	0	322.6	3.825	10.35	320.2	3.934	10.61
10/9/11 11:00	-3.95	84.6	3.976	312.5	11.4	0	336.5	2.887	10.1	313	3.466	17.24
10/9/11 12:00	-3.588	81.8	3.826	307.9	11.7	0	293.7	4.049	6.088	304.6	3.91	10.72
10/9/11 13:00	-3.345	81.4	4.426	297	10.04	0	284	4.806	5.236	289.1	4.205	14.19
10/9/11 14:00	-3.222	82.8	4.75	286.8	9.82	0	279	6.047	4.356	279.7	4.791	11.33
10/9/11 15:00	-3.271	83.3	4.899	285.8	9.57	0	290.4	5.479	7.71	280.3	4.901	9.45
10/9/11 16:00	-3.162	81.8	5.914	287	7.23	0	278.5	5.758	5.658	273.8	6.196	7.05
10/9/11 17:00	-3.055	84.2	6.389	281.2	6.259	0	284.8	6.897	4.626	283.8	6.987	5.002
10/9/11 18:00	-3.057	83.6	6.607	279.6	6.635	0	283.9	6.57	4.508	279.3	6.678	7.5
10/9/11 19:00	-3.296	89.1	7.54	283.8	5.755	0	288.2	8.25	5.329	284	7.98	6.265
10/9/11 20:00	-3.269	85.9	8.09	282.7	6.144	0	283.7	8.7	5.976	281	8.46	6.286
10/9/11 21:00	-3.414	85.6	8.64	283.3	5.547	0	282.7	9.3	4.662	284.2	8.83	5.376
10/9/11 22:00	-3.635	87.5	8.79	282.7	6.023	0	282.5	9.05	5.066	282.9	9.05	5.464
10/9/11 23:00	-3.962	90.5	9.05	284	5.928	0	284	9.03	5.79	283.2	8.38	6.085

	Hourly Avg. Temp.	Hourly Avg. Rel. Humidity	Hourly Wind Speed	Hourly Wind Direction	Hourly Wind S.D.	Hourly Rainfall	2 Minute Wind Direction	2 Minute Wind Speed	2 Minute Wind S.D.	10 Minute Wind Direction	10 Minute Wind Speed	10 Minute Wind S.D.
Koala Hourly Array	Degrees C	%	m/s	Degrees	Degrees	mm	Degrees	m/s	Degrees	Degrees	m/s	Degrees
Collect Date/Time												
10/10/11 0:00	-4.135	90.3	8.15	276.7	7.9	0	278.8	7.88	6.967	276.6	7.69	6.545
10/10/11 1:00	-4.155	92.4	8.09	271.5	7.7	0	275.9	9.21	4.833	275.7	7.6	5.834
10/10/11 2:00	-4.433	94.9	8.29	278.7	5.902	0	278.1	9.18	4.931	275.1	8.5	5.568
10/10/11 3:00	-4.57	95	8.33	274.6	6.409	0	273.7	8.4	5.204	274	8.47	5.59
10/10/11 4:00	-4.561	96.5	8.53	275.1	5.923	0	274.2	8.94	4.836	272.7	8.08	5.058
10/10/11 5:00	-4.73	94.4	8.37	269.3	5.82	0	266	7.45	5.93	269.1	7.93	5.94
10/10/11 6:00	-4.675	95.7	7.7	272.6	6.192	0	275.9	7.65	5.704	273.6	7.27	7.02
10/10/11 7:00	-4.415	95.1	7.25	278.4	6.459	0	279.7	6.801	6.838	280.8	7.27	6
10/10/11 8:00	-4.408	92.8	8.08	273.5	5.98	0	270.8	8.48	3.817	275	7.84	6.191
10/10/11 9:00	-4.442	92.8	8.26	272.5	5.741	0	272.4	8.46	4.76	272.2	8.63	4.51
10/10/11 10:00	-4.427	92.8	8.5	272.8	6.063	0	270.7	8.61	6.824	273.4	9.12	5.559
10/10/11 11:00	-4.6	93.4	8.71	272	6.291	0	274.7	8.6	4.242	271.9	8.49	5.416
10/10/11 12:00	-4.594	92.8	8.38	270.6	6.197	0	275.1	7.77	5.085	271.9	8.35	6.7
10/10/11 13:00	-4.528	93.7	7.8	272.1	6.423	0	273.5	6.858	5.715	269.6	7.02	7.08
10/10/11 14:00	-4.493	94	7.5	269.2	7.14	0	274.5	6.669	9.05	272.4	7.37	8
10/10/11 15:00	-4.503	94.3	10.39	274.8	5.922	0	270.3	10.32	4.126	273.8	11.52	5.478
10/10/11 16:00	-4.447	93.3	10.7	273	7.04	0	275	10.22	6.675	277.1	10.32	6.044
10/10/11 17:00	-4.686	95.6	10.13	275.4	6.329	0	274.6	8.36	5.64	273.5	8.88	7.43
10/10/11 18:00	-4.803	95.9	9.91	274.6	5.818	0	275.7	9.26	5.952	275.5	9.85	5.165
10/10/11 19:00	-4.75	95.8	8.88	274.9	6.478	0	274.2	7.55	3.987	272.1	8.33	7.03
10/10/11 20:00	-4.749	96	8.63	273	6.135	0	275.3	8.34	5.583	269.2	8.91	7.1
10/10/11 21:00	-5.021	97.7	8.79	276.9	6.008	0	276.2	8.45	6.309	276.2	9.08	5.91
10/10/11 22:00	-5.114	98.2	8.4	274.8	5.894	0	272.3	7.82	4.372	272.6	8.11	5.739
10/10/11 23:00	-5.096	98.3	7.71	274.1	5.935	0	273.5	7.64	5.467	273.2	6.816	6.345
10/11/11 0:00	-4.953	98.4	7.3	275.2	5.556	0	276.6	6.426	5.473	275.7	7.15	4.948
10/11/11 1:00	-4.888	98.3	6.876	273.2	5.669	0	270.2	6.556	5.848	270.6	6.964	5.737
10/11/11 2:00	-4.915	98.2	7.07	272.8	5.691	0	276	7.81	4.837	275	7.33	5.361
10/11/11 3:00	-5.311	98.3	6.848	275.7	6.1	0	275.6	5.771	6.311	276.7	6.27	6.745
10/11/11 4:00	-5.345	98.3	6.317	279.7	5.756	0	284.2	6.526	4.391	282.5	6.294	5.888
10/11/11 5:00	-5.229	98.1	5.91	283.1	5.601	0	281.4	5.485	4.795	284.9	5.767	5.501
10/11/11 6:00	-5.25	98	6.055	282.2	6.013	0	283.8	6.836	4.889	282	6.278	6.38
10/11/11 7:00	-5.331	98	5.642	281	6.098	0	282.2	5.386	4.908	282.4	5.13	5.771
10/11/11 8:00	-5.165	98.2	4.349	279.7	6.109	0	277.3	4.249	5.08	278.4	4.37	4.852
10/11/11 9:00	-4.958	98.3	3.724	277.5	6.035	0	276.4	3.511	5.957	276.7	3.508	6.098
10/11/11 10:00	-4.643	98.4	2.889	271.2	6.589	0	271.1	2.733	6.172	269.4	2.608	6.518
10/11/11 11:00	-4.166	98.5	2.577	270	7.8	0	266.7	2.493	8.64	270.9	2.426	8.4
10/11/11 12:00	-3.659	98.8	2.301	270.8	7.26	0	271.8	2.064	7.57	273	2.092	7.79
10/11/11 13:00	-3.062	98.9	2.313	271.6	7.12	0	271.3	2.431	7.21	274.8	2.366	6.623
10/11/11 14:00	-2.536	98.9	2.423	275.5	6.817	0	276	2.915	5.076	275.9	2.847	5.885
10/11/11 15:00	-2.468	98.6	2.978	272.7	6.163	0	267.1	3.203	5.095	272.2	3.243	5.946
10/11/11 16:00	-2.545	98.4	2.973	271.8	5.905	0	272.5	3	5.671	271.5	2.976	5.528
10/11/11 17:00	-2.5	98.4	3.056	273.5	5.855	0	275.9	2.92	6.272	273.9	3.045	5.757
10/11/11 18:00	-2.497	98.5	3.033	270.5	6.479	0	271.7	2.978	5.622	272.1	2.866	6.544
10/11/11 19:00	-2.418	98.8	2.814	270.4	5.837	0	272.6	3.167	4.781	271.7	2.768	5.527
10/11/11 20:00	-2.255	98.9	3.458	269.5	5.065	0	269.1	2.945	5.947	269.6	3.001	5.711
10/11/11 21:00	-2.06	99.3	3.104	264.4	5.654	0	260.9	3.461	6.305	263.9	3.175	5.336
10/11/11 22:00	-1.732	100.1	3.325	261.2	6.476	0	257.7	3.541	7.57	257.2	3.244	6.456
10/11/11 23:00	-1.366	100.4	2.905	258.8	6.189	0	261.5	2.699	6.374	259.3	2.669	5.814
10/12/11 0:00	-0.997	100.5	2.597	259.9	5.481	0	259	2.556	5.184	260.8	2.503	5.29
10/12/11 1:00	-0.563	100.5	2.554	256.2	5.62	0	247.7	2.675	5.993	247.5	2.759	5.598
10/12/11 2:00	0.062	100.5	3.174	239.9	5.36	0	227.5	5.112	4.562	229.5	5.087	5.698
10/12/11 3:00	0.391	100.5	5.214	231.1	5.153	0	225.2	5.534	4.615	225.3	5.339	5.04
10/12/11 4:00	1.135	100.4	5.703	219.1	5.37	1.27	218.8	6.141	4.788	215.9	6.003	5.111
10/12/11 5:00	1.363	100.4	5.902	220	5.11	1.016	220.9	5.891	2.963	220.3	5.655	4.28
10/12/11 6:00	1.366	100.3	6.412	221	4.884	0.508	219.6	5.813	4.942	219.4	6.872	4.804
10/12/11 7:00	1.188	100.4	6.34	221.3	5.35	0	217.6	7.19	4.247	218.3	6.763	5.251
10/12/11 8:00	1.05	100.5	7.03	222.9	4.941	0	222.9	7.97	4.338	221.3	7.91	4.453
10/12/11 9:00	1.134	100.5	7.21	219.5	4.863	0.508	218.1	8.2	4.289	218.7	7.78	4.614
10/12/11 10:00	1.007	100.6	6.864	221.1	5.74	0.254	222.9	6.901	6.237	221.3	6.801	5.926
10/12/11 11:00	0.89	100.6	6.101	230.2	5.484	0.508	229.4	5.885	5.753	234.4	6.111	5.748
10/12/11 12:00	0.836	100.4	7.2	227	5.253	0.762	227.8	6.917	6.725	227.7	7.25	5.186
10/12/11 13:00	0.98	99.5	7.24	227.9	5.405	0.254	230.3	7.98	4.355	226.3	8.25	5.601
10/12/11 14:00	1.145	98.5	7.99	223.8	5.694	0.254	219.8	7.4	7.98	219.7	7.66	6.769
10/12/11 15:00	1.291	98.2	7.34	222	5.954	0	218.3	6.007	5.021	218.4	7.03	5.5
10/12/11 16:00	1.243	97.7	7.27	218.9	5.447	0	216.8	7.04	5.951	216.5	7.19	5.901
10/12/11 17:00	1.201	97	6.612	220.2	5.726	0	229.9	6.587	5.151	227.9	6.323	5.373
10/12/11 18:00	1.09	96	6.422	220.8	5.931	0	217.3	5.973	4.722	220.5	6.256	5.632
10/12/11 19:00	0.948	95.8	5.789	219	5.727	0	212.9	4.787	6.218	216.9	4.901	5.992
10/12/11 20:00	0.739	96.9	4.698	213	7.05	0	227.1	3.644	7.43	224.8	3.467	7.64
10/12/11 21:00	0.382	97.5	5.281	221.4	6.173	0	216.7	4.56	6.994	214.9	5.254	6.933
10/12/11 22:00	-0.027	99.2	4.634	213	6.976	0	212.8	4.63	5.412	210.6	4.759	5.875
10/12/11 23:00	-0.35	100.5	4.322	207.4	7.02	0	210.4	4.876	7.89	210.2	4.317	6.131

	Hourly Avg. Temp.	Hourly Avg. Rel. Humidity	Hourly Wind Speed	Hourly Wind Direction	Hourly Wind S.D.	Hourly Rainfall	2 Minute Wind Direction	2 Minute Wind Speed	2 Minute Wind S.D.	10 Minute Wind Direction	10 Minute Wind Speed	10 Minute Wind S.D.
Koala Hourly Array	Degrees C	%	m/s	Degrees	Degrees	mm	Degrees	m/s	Degrees	Degrees	m/s	Degrees
Collect Date/Time												
10/13/11 0:00	-0.364	100.8	4.591	206.7	6.597	0	215.2	4.533	5.448	211.7	4.6	5.681
10/13/11 1:00	-0.238	100.8	4.178	203.4	6.193	0	192	3.659	6.381	196.2	4.075	6.857
10/13/11 2:00	-0.156	100.8	3.19	194.7	7.21	0	196.1	3.078	6.481	195.7	3.179	6.088
10/13/11 3:00	-0.118	100.9	3.486	199.6	6.063	0	204.7	2.673	6.095	203.7	3.272	5.279
10/13/11 4:00	-0.186	100.9	3.565	200.4	6.52	0	196	4.034	4.627	196.6	3.499	5.402
10/13/11 5:00	-0.393	101	3.437	195.2	6.932	0	195.1	3.505	6.025	192.8	3.546	6.58
10/13/11 6:00	-0.426	101	3.257	196	7.81	0	189.4	2.846	7.71	190.9	3.434	5.899
10/13/11 7:00	-0.584	101.1	2.87	185.1	7.56	0	185.3	2.754	5.254	184.5	3.12	7.15
10/13/11 8:00	-0.786	101.1	3.243	187.5	12.22	0	207.5	3.091	4.263	188.4	2.985	16.96
10/13/11 9:00	-1.218	101.1	3.079	202.2	10.17	0	201.5	3.373	5.691	205.6	2.972	7.52
10/13/11 10:00	-1.29	100.7	2.826	188.8	12.81	0	179.5	2.816	7.54	182.5	2.996	7.41
10/13/11 11:00	-1.11	100	3.305	187.8	11.11	0	189.5	3.49	5.842	184.7	3.847	7.34
10/13/11 12:00	-1.263	98.3	3.85	193	8.52	0	191.4	3.832	6.821	192.5	4.403	9.05
10/13/11 13:00	-1.28	97.2	4.318	192.7	9.5	0	182.8	4.361	7.02	172.7	4.101	8.65
10/13/11 14:00	-1.144	97.2	4.238	178.3	11.56	0	168.9	4.281	6.334	178.6	3.88	10.45
10/13/11 15:00	-1.027	98	3.792	179.5	9.27	0	173.5	3.616	4.573	177.1	3.856	6.7
10/13/11 16:00	-1.212	98.2	3.636	188	9.99	0	188.8	2.361	2.893	186.8	3.351	9.71
10/13/11 17:00	-1.077	98.2	3.551	168.4	12.87	0	152.7	3.695	6.562	156.5	3.215	7.75
10/13/11 18:00	-1.296	99.1	3.012	183.3	21.13	0	166.5	3.569	9.31	182.7	3.285	22.3
10/13/11 19:00	-1.475	99.1	3.503	165.7	9.13	0	155.8	3.736	5.151	165.3	3.779	10.31
10/13/11 20:00	-1.776	98.4	3.47	182.7	8.39	0	181.8	3.352	4.03	190.5	3.3	7.88
10/13/11 21:00	-1.952	97.7	3.4	179.7	6.23	0	176.6	3.642	7.13	178.7	3.792	6.425
10/13/11 22:00	-2.004	96.8	4.604	174.4	8.19	0	171.5	4.861	3.608	177.3	5.21	6.426
10/13/11 23:00	-1.891	96.3	4.211	178.4	7.52	0	180.7	3.35	3.804	178.4	3.192	5.588
10/14/11 0:00	-1.6	95.6	4.141	174.4	8.66	0	175.1	5.116	6.83	179.9	4.414	6.327
10/14/11 1:00	-1.536	96	4.824	161.6	7.66	0	161.2	5.721	6.041	157.1	4.907	6.876
10/14/11 2:00	-1.514	96	4.776	161.8	6.762	0	165.8	4.168	6.32	166.6	4.221	5.466
10/14/11 3:00	-1.566	98.2	3.958	163.6	6.032	0	166.1	3.634	4.378	164.9	3.61	4.278
10/14/11 4:00	-1.833	99.2	3.74	150.6	10.02	0	154.6	4.282	3.947	150.4	4.213	5.422
10/14/11 5:00	-1.945	97.3	4.636	152.7	6.424	0	148.7	4.245	3.154	147	4.676	5.078
10/14/11 6:00	-1.975	96.7	4.911	151.5	8.19	0	147.7	5.974	3.791	148.7	5.824	6.096
10/14/11 7:00	-2.079	96.1	4.579	163.1	6.681	0	168.4	3.055	4.764	168.9	3.363	3.987
10/14/11 8:00	-2.312	97.4	3.675	175.1	6.379	0	182.3	3.693	3.627	173.4	4.576	8.77
10/14/11 9:00	-1.852	98	3.772	174.7	6.34	0	162.6	3.654	3.61	163.7	3.521	5.96
10/14/11 10:00	-1.511	97.6	3.956	169.4	6.816	0	172.4	4.052	4.934	172.9	3.93	6.452
10/14/11 11:00	-1.269	97.9	4.134	178	5.666	0	185.8	3.638	4.847	181.8	3.776	5.311
10/14/11 12:00	-0.78	96.8	4.405	177.6	6.084	0	172.9	4.917	5.168	177.5	4.838	6.377
10/14/11 13:00	-0.592	96.6	5.038	177.9	5.862	0	175	5.069	3.289	178.2	5.081	5.247
10/14/11 14:00	-0.286	98.4	4.419	166.5	6.338	0	166.5	4.656	4.402	163	5.209	6.156
10/14/11 15:00	-0.006	96.8	4.461	167.5	6.687	0	168	4.547	4.551	175	4.286	7.02
10/14/11 16:00	0.007	98.6	3.949	177.3	5.455	0	184.8	3.912	4.642	182.3	3.793	5.044
10/14/11 17:00	0.052	99.8	3.297	186.6	5.118	0	192.6	3.884	3.034	193.1	3.464	4.49
10/14/11 18:00	0.031	100.3	3.561	193	5.911	0	196.1	3.76	5.121	193.7	3.543	6.926
10/14/11 19:00	0.066	100.5	4.222	194.5	5.453	0	192.7	4.557	5.485	192.8	4.378	5.648
10/14/11 20:00	0.109	100.6	4.564	192.5	5.268	0	191.7	4.568	4.592	191.9	4.812	4.897
10/14/11 21:00	0.178	100.7	4.376	191.2	5.756	0	192.4	4.149	6.76	193.1	4.118	5.585
10/14/11 22:00	0.245	100.7	4.151	195.8	6.004	0	197.1	4.252	5.049	197	4.041	5.28
10/14/11 23:00	0.403	100.8	4.002	192.9	5.353	0.254	194.4	3.788	5.713	193.5	3.919	4.848
10/15/11 0:00	0.464	100.8	3.463	176.4	6.114	0	169.4	3.617	3.385	166.7	3.597	4.834
10/15/11 1:00	0.43	100.8	3.58	169.1	5.89	0	166.7	3.184	4.769	168.9	3.562	6.142
10/15/11 2:00	0.293	100.8	3.306	169.1	6.303	0	167.7	3.792	4.548	170	3.652	5.276
10/15/11 3:00	0.227	100.9	3.212	150.9	6.547	0	145.3	3.258	4.679	143.1	2.69	6.727
10/15/11 4:00	0.074	100.9	3.648	139.2	6.55	0	145.2	3.116	4.562	140.4	3.418	5.395
10/15/11 5:00	-0.129	100.9	3.773	136.3	5.391	0	146.4	3.948	5.186	144.1	4.093	5.328
10/15/11 6:00	-0.387	101	3.369	128	5.789	0	124.4	2.299	2.47	122.2	2.325	4.001
10/15/11 7:00	-0.622	101	2.15	129.3	5.189	0	139.1	1.272	6.279	131.9	1.71	6.931
10/15/11 8:00	-1.007	101.1	1.206	131.2	7.27	0	129.8	1.14	6.041	126	1.204	6.218
10/15/11 9:00	-1.182	101	1.242	127.3	5.65	0	132.1	1.261	4.059	126.1	1.324	5.192
10/15/11 10:00	-1.104	100.8	1.465	115.7	6.679	0	119.4	1.488	3.829	118.2	1.39	5.557
10/15/11 11:00	-0.421	100.7	2.567	98.5	7.71	0	84.7	3.333	3.857	83.7	3.254	6.397
10/15/11 12:00	-0.25	100.4	3.788	81.2	5.718	0.254	71	4.003	3.039	78.4	3.573	6.888
10/15/11 13:00	-0.069	100	3.552	72.4	6.583	0	64.85	3.766	5.766	69.79	3.572	6.593
10/15/11 14:00	0.2	99.7	4.345	57.55	8.01	0	45.84	3.951	8.55	40.95	4.316	11.25
10/15/11 15:00	0.28	99.3	4.098	50.51	8.59	0	50.47	4.337	4.163	49.97	3.847	7.8
10/15/11 16:00	0.218	98.3	3.708	48.52	8.54	0	53.82	3.537	3.593	46.96	3.459	8.26
10/15/11 17:00	-0.089	97.4	3.679	41.23	7.68	0	30.3	3.185	4.982	39.78	3.312	7.5
10/15/11 18:00	-0.692	99.9	3.467	48.36	9.51	0	49.21	4.09	2.375	63.18	4.17	9.01
10/15/11 19:00	-1.292	100.5	2.975	41.91	9.13	0	17.75	2.509	4.856	32.1	2.293	12.46
10/15/11 20:00	-1.546	100.3	1.587	31.42	9.34	0	37.97	1.185	5.894	45.58	1.197	9.96
10/15/11 21:00	-1.713	100.4	1.369	11.25	11.61	0	351.5	1.389	6.278	6.912	1.154	11.55
10/15/11 22:00	-2.251	100.5	1.143	336.1	12.44	0	279.7	1.708	2.806	276	0.836	10.57
10/15/11 23:00	-2.743	100	1.987	293.5	5.544	0	290.7	1.744	3.815	292.4	1.803	3.816

	Hourly Avg. Temp.	Hourly Avg. Rel. Humidity	Hourly Wind Speed	Hourly Wind Direction	Hourly Wind S.D.	Hourly Rainfall	2 Minute Wind Direction	2 Minute Wind Speed	2 Minute Wind S.D.	10 Minute Wind Direction	10 Minute Wind Speed	10 Minute Wind S.D.
Koala Hourly Array	Degrees C	%	m/s	Degrees	Degrees	mm	Degrees	m/s	Degrees	Degrees	m/s	Degrees
Collect Date/Time												
10/16/11 0:00	-3.485	99.5	1.67	299.1	4.292	0	308.8	1.644	2.567	308.6	1.603	3.337
10/16/11 1:00	-2.91	99.7	1.36	304.7	8.03	0	316.5	0.905	6.56	304.5	0.898	10.22
10/16/11 2:00	-2.523	99.9	0.863	316.1	11.13	0	295.9	1.731	7.89	297	1.66	5.58
10/16/11 3:00	-3.086	99.4	1.545	296	5.144	0	304	1.3	3.253	309.8	1.255	5.64
10/16/11 4:00	-2.682	99.4	1.735	307.1	8.17	0	308.1	1.907	7.51	308.7	1.898	6.73
10/16/11 5:00	-2.546	99.7	2.032	309	6.899	0	301.5	2.49	6.287	307.6	2.174	5.472
10/16/11 6:00	-2.535	99.3	3.518	277	5.956	0	279.2	3.934	3.899	275.8	3.831	6.72
10/16/11 7:00	-2.657	99.3	4.398	282.4	6.106	0	282.9	4.987	5.451	280.6	4.847	5.979
10/16/11 8:00	-2.984	98.6	4.14	281.6	5.382	0	272.6	3.667	4.732	278.4	3.629	6.246
10/16/11 9:00	-3.115	97.7	3.236	258.9	7.72	0	253.1	2.902	4.586	256.9	2.663	5.289
10/16/11 10:00	-2.754	97.7	2.871	264.5	7.16	0	260.7	3.172	5.122	267.1	3.166	5.968
10/16/11 11:00	-2.614	96.3	3.455	254.2	7.33	0	244.5	3.356	7.19	253.5	3.928	7.46
10/16/11 12:00	-2.741	95.1	3.47	242.5	10.5	0	261	3.894	4.449	259.2	3.511	7.51
10/16/11 13:00	-2.586	95.1	3.591	261.3	7.88	0	254	4.1	9.93	255.4	3.961	8.01
10/16/11 14:00	-2.581	93.5	4.176	267.7	7.4	0	268	3.533	5.451	262.8	3.802	7.29
10/16/11 15:00	-2.752	93.6	4.526	269.6	6.379	0	265.8	4.481	7	270.4	4.79	5.83
10/16/11 16:00	-2.687	94.8	4.313	256.1	8.19	0	255.2	4.394	10.06	256.7	4.237	8.34
10/16/11 17:00	-2.981	94	4.846	265.2	8.28	0	271.5	4.879	5.592	269.1	5.241	5.8
10/16/11 18:00	-3.339	94.6	5.215	263.8	6.586	0	259.2	4.92	6.156	259.9	4.418	6.249
10/16/11 19:00	-3.395	95.2	4.533	263.2	7.77	0	247.5	3.748	5.736	262.3	4.502	9.29
10/16/11 20:00	-3.151	95.6	4.656	245.1	8.45	0	248.4	4.534	6.948	243.4	4.52	8.6
10/16/11 21:00	-2.998	94.8	4.858	238.5	7.17	0	247.4	5.035	5.23	245.5	4.857	6.189
10/16/11 22:00	-3.024	94	5.172	235.4	6.621	0	227.7	4.114	4.746	229.7	4.635	7.07
10/16/11 23:00	-3.11	92.2	4.446	241.9	5.702	0	242.2	4.083	6.533	243.5	4.444	5.613
10/17/11 0:00	-3.155	91.9	5.428	239.5	5.698	0	237.9	6.757	6.044	238.1	6.228	5.717
10/17/11 1:00	-3.767	91.2	5.877	240.7	5.231	0	244.8	6.062	6.155	245.2	6.162	5.29
10/17/11 2:00	-4.166	90.9	6.547	244.6	5.1	0	245.1	6.107	4.497	244.7	6.648	5.383
10/17/11 3:00	-4.266	93.7	6.051	249.1	5.498	0	245.1	6.084	4.639	247.4	6.066	4.804
10/17/11 4:00	-4.311	93.9	6.581	250.9	5.066	0	262.9	6.689	3.965	259.2	6.422	5.423
10/17/11 5:00	-4.648	94.9	6.674	258.6	4.97	0	256.5	6.942	4.541	256.9	6.587	5.409
10/17/11 6:00	-4.629	94.7	6.872	261.7	5.424	0	266.8	6.422	5.229	267.6	6.33	5.159
10/17/11 7:00	-4.81	96.2	6.683	262.2	5.656	0	255.2	7.61	5.269	257.7	7.82	5.559
10/17/11 8:00	-4.906	95	7.08	257	5.037	0	258	7.04	4.495	257.1	7.11	5.11
10/17/11 9:00	-4.923	94	7.53	258	5.332	0	256.6	7.18	4.44	257.4	7.37	4.488
10/17/11 10:00	-4.778	94.9	6.563	258.5	5.698	0	261.7	6.775	6.657	260.2	6.633	5.598
10/17/11 11:00	-4.272	93.5	7.1	253.8	6.093	0	247.6	7.84	3.904	248.9	7.97	5.307
10/17/11 12:00	-3.849	88.2	8.3	243.7	5.032	0	245.4	8.84	4.679	245.8	8.77	4.289
10/17/11 13:00	-3.468	86.1	8.65	248.4	5.596	0	243.8	8.47	5.099	248	8.57	6.16
10/17/11 14:00	-2.943	85.1	8.87	245.9	5.756	0	244.3	7.77	6.5	246	8.15	6.41
10/17/11 15:00	-3.133	87.3	8.12	243.2	6.106	0	241.7	8.4	4.825	244.1	8.14	6.529
10/17/11 16:00	-3.281	88.7	8.17	247	5.976	0	250.6	8.66	4	248.8	8.16	4.88
10/17/11 17:00	-3.693	88.8	8.12	246.5	6.014	0	246.6	7.75	6.502	243.9	8.06	6.166
10/17/11 18:00	-4.08	90.1	8.01	245.4	5.847	0	251.1	8.72	4.18	247.3	8.01	5.281
10/17/11 19:00	-4.243	92.6	7.49	251.4	5.498	0	250.6	7.91	5.442	251.5	7.34	5.784
10/17/11 20:00	-4.299	93.6	7.64	251.1	5.594	0	246.4	7.45	5.264	248.5	7.82	5.466
10/17/11 21:00	-4.403	93.8	7.62	248.8	5.407	0	247.5	7.07	6.262	247.2	7.6	5.149
10/17/11 22:00	-4.443	94.7	7.75	249.9	5.57	0	249.2	8.36	5.857	249.3	7.59	5.117
10/17/11 23:00	-4.562	94.9	8.03	248.2	5.276	0	244.5	8.4	4.631	247.3	8.28	4.724
10/18/11 0:00	-4.71	95.2	8.04	246.5	5.338	0	248.4	8.2	3.738	248	7.97	4.384
10/18/11 1:00	-4.867	95.4	7.77	247.9	5.014	0	252.1	7.34	4.354	249.5	7.49	5.518
10/18/11 2:00	-4.934	95.6	7.26	248.8	5.479	0	250.3	7.39	5.281	248.9	7.48	5.67
10/18/11 3:00	-4.899	95.8	7.36	248.1	5.294	0	247.9	7.26	3.973	247.1	6.928	5.226
10/18/11 4:00	-4.768	96.6	6.582	248.3	5.753	0	246.7	6.631	4.509	247.9	6.414	5.806
10/18/11 5:00	-4.597	96.2	6.885	245.1	5.384	0	241.1	6.275	4.613	241.9	6.494	4.867
10/18/11 6:00	-4.193	95.8	6.465	235.5	5.887	0	241	5.709	8.45	239	6.089	6.434
10/18/11 7:00	-4.308	96.6	6.1	237	6.079	0	231.8	6.714	5.488	230.2	6.705	5.312
10/18/11 8:00	-4.475	95.5	7.07	226.8	5.431	0	227	6.648	7.43	225.6	6.367	6.018
10/18/11 9:00	-4.494	95.5	7.06	229.2	5.619	0	226.5	7.53	5.295	228.7	7.73	5.142
10/18/11 10:00	-4.265	95.8	7.43	229.5	5.415	0	236.7	6.619	5.257	234.5	7.09	5.351
10/18/11 11:00	-4.031	95.9	7.12	233.5	5.223	0	226.2	6.644	4.355	227	6.755	4.88
10/18/11 12:00	-3.702	94.3	7.27	231.2	5.31	0	234.4	6.572	6.084	232.8	7.26	5.217
10/18/11 13:00	-3.509	93.7	6.708	230	6.328	0	230.4	6.468	5.387	231.8	6.195	6.351
10/18/11 14:00	-3.414	93.4	6.571	232.8	5.823	0	235.8	5.699	6.571	235.5	6.579	5.057
10/18/11 15:00	-3.362	93.7	6.579	233	5.538	0	238.7	6.47	4.343	234.7	6.291	5.773
10/18/11 16:00	-3.224	94.7	6.361	237.4	5.264	0	237.7	6.315	4.462	238.6	6.335	4.76
10/18/11 17:00	-3.123	96.1	6.292	238.9	5.675	0	244	5.471	4.916	244.7	5.851	5.216
10/18/11 18:00	-3.202	97.1	6.999	247.9	6.129	0	239.6	8.38	3.778	243.5	8.2	5.916
10/18/11 19:00	-3.259	98.9	7.64	247.6	5.872	0	251.7	7.18	6.211	248.7	7.43	6.379
10/18/11 20:00	-3.112	99.3	7.75	253	6.051	0	259.2	8.79	3.99	257.8	8.22	4.84
10/18/11 21:00	-2.883	99.8	7.88	252.5	5.396	0	249.2	8.59	5.01	248.4	8.1	5.465
10/18/11 22:00	-2.559	99.8	9.14	253.6	5.33	0	252.7	9.92	3.793	254.6	9.85	4.93
10/18/11 23:00	-2.469	99.9	8.67	251.8	5.286	0	250.6	9.59	4.329	250.4	9.07	5.088

	Hourly Avg. Temp.	Hourly Avg. Rel. Humidity	Hourly Wind Speed	Hourly Wind Direction	Hourly Wind S.D.	Hourly Rainfall	2 Minute Wind Direction	2 Minute Wind Speed	2 Minute Wind S.D.	10 Minute Wind Direction	10 Minute Wind Speed	10 Minute Wind S.D.
Koala Hourly Array	Degrees C	%	m/s	Degrees	Degrees	mm	Degrees	m/s	Degrees	Degrees	m/s	Degrees
Collect Date/Time												
10/19/11 0:00	-2.335	99.8	7.99	249	5.516	0	254.3	7.09	4.551	251.7	7.45	5.151
10/19/11 1:00	-2.164	99.8	7.65	260.6	5.016	0	264.3	8.16	5.793	263.7	7.91	5.075
10/19/11 2:00	-2	99.8	8.44	265.3	5.05	0	265.3	9.05	6.11	265.4	9.32	5.065
10/19/11 3:00	-1.861	99.9	9.3	266.6	4.866	0	268.1	9.98	4.223	269.1	9.72	4.01
10/19/11 4:00	-1.929	99.8	10.56	269.2	4.791	0	264.1	10.26	6.467	265.7	10.51	5.216
10/19/11 5:00	-2.127	99.6	10	262.9	4.96	0	262.8	8.89	3.532	265.2	9.6	3.868
10/19/11 6:00	-2.373	99.5	8.98	265.5	4.801	0	261.1	9.06	4.438	263.4	8.53	5.368
10/19/11 7:00	-2.134	99.5	9.29	260.9	5.174	0	264.6	9.84	4.391	262.8	9.58	4.495
10/19/11 8:00	-2.257	99.3	9.57	264.8	4.698	0	265.8	8.68	5.566	265.6	9.3	4.945
10/19/11 9:00	-2.13	99.4	8.63	268.7	4.598	0	269.5	7.84	4.098	271.1	8.07	4.484
10/19/11 10:00	-1.924	99.6	7.49	272.2	4.136	0	278.5	7.81	3.59	277	7.4	3.824
10/19/11 11:00	-1.598	99.6	7.96	280.1	3.559	0	279	8.24	3.024	281.1	8.03	3.599
10/19/11 12:00	-1.195	99.8	7.28	279.2	3.982	0	277.3	6.159	3.222	277.9	6.476	3.496
10/19/11 13:00	-0.816	100.1	4.021	277	3.031	0	276.9	2.625	0	276.9	2.636	0
10/19/11 14:00	-0.604	100.1	2.27	277.1	0	0	277.3	2.229	0	277.2	2.112	0
10/19/11 15:00	-0.76	100.2	1.714	277.3	0	0	277.3	1.363	0	277.3	1.573	0
10/19/11 16:00	-1.121	100	1.499	277.4	0	0	277.4	1.457	0	277.4	1.391	0
10/19/11 17:00	-1.307	100.1	1.106	277.4	0	0	277.3	0.978	0	277.3	0.898	0
10/19/11 18:00	-1.418	100.1	0.965	277.3	0	0	277.4	1.097	0	277.4	1.132	0
10/19/11 19:00	-1.811	100	1.265	277.4	0	0	277.4	1.228	0	277.4	1.316	0
10/19/11 20:00	-2.227	99.7	1.689	277.5	0	0	277.5	2.03	0	277.5	1.95	0
10/19/11 21:00	-3.061	99.1	2.221	277.5	0	0	277.5	2.182	0	277.5	2.363	0
10/19/11 22:00	-3.477	98.9	2.284	277.6	0	0	277.7	2.416	0	277.6	2.279	0
10/19/11 23:00	-3.817	98.7	2.538	284.9	3.592	0	285.2	2.605	2.812	286.7	2.419	3.17
10/20/11 0:00	-4.155	98.4	2.687	287	3.083	0	287.7	2.864	2.244	287.1	2.832	2.897
10/20/11 1:00	-4.609	98.2	2.835	286.2	2.836	0	285.7	2.71	2.629	284.9	2.812	2.614
10/20/11 2:00	-4.889	98	2.709	288.1	3.037	0	291.7	2.822	2.927	291.5	2.754	2.744
10/20/11 3:00	-5.156	97.8	2.729	288.2	3.105	0	284.9	2.463	2.771	285.8	2.753	2.813
10/20/11 4:00	-5.417	97.6	3.027	286.3	2.773	0	286.4	3.16	2.608	286.3	3.117	2.988
10/20/11 5:00	-6.07	97.1	3.213	288.1	2.761	0	288.3	3.527	2.907	288.9	3.422	2.769
10/20/11 6:00	-6.57	96.9	3.534	288.8	2.997	0	285.7	3.688	2.296	286.5	3.641	2.97
10/20/11 7:00	-6.713	96.9	3.474	285.2	3.146	0	284.3	3.605	3.475	284.4	3.393	3.393
10/20/11 8:00	-6.834	96.8	3.376	287.1	3.356	0	287.8	3.298	3.311	288.6	3.333	3.251
10/20/11 9:00	-7.05	96.5	3.624	286.7	3.489	0	285.4	3.659	3.215	285.6	3.731	3.666
10/20/11 10:00	-7.1	96.4	3.715	282.9	3.365	0	280.3	3.748	2.872	280.9	3.706	3.298
10/20/11 11:00	-6.906	96.4	3.833	281.1	3.244	0	283.3	3.671	3.001	283.3	3.833	3.624
10/20/11 12:00	-6.893	96	3.781	283.9	3.83	0	281.5	3.588	4.598	284.2	3.735	4.257
10/20/11 13:00	-6.777	95.8	3.685	282.3	3.54	0	283.4	3.721	3.344	283	3.692	2.984
10/20/11 14:00	-6.832	95.6	3.448	282.7	3.791	0	283.4	3.568	4.155	283.1	3.549	3.506
10/20/11 15:00	-6.861	95.4	3.343	283	3.793	0	283.7	3.272	2.185	284.5	3.167	3.241
10/20/11 16:00	-7.05	95.4	2.912	290.8	3.864	0	292.4	2.872	4.116	296	2.72	4.404
10/20/11 17:00	-7.42	95.3	2.876	290.7	4.126	0	294.5	2.51	3.585	292.1	2.718	3.799
10/20/11 18:00	-8.11	94.8	3.053	295.4	3.541	0	294.5	3.053	3.128	294.7	3.283	3.116
10/20/11 19:00	-8.57	94.4	3.268	293.5	3.535	0	293	2.826	3.726	292.5	3.166	3.458
10/20/11 20:00	-8.84	94.2	3.139	295.5	3.769	0	298.1	2.92	3.995	297.2	3.077	3.865
10/20/11 21:00	-9.3	94.1	3.044	299.8	3.544	0	302.1	3.107	2.804	300.7	3.067	3.429
10/20/11 22:00	-9.63	93.9	3.216	299.2	3.877	0	297.2	3.173	3.484	297.4	3.255	3.584
10/20/11 23:00	-9.78	93.9	3.241	297.9	3.869	0	299.5	3.304	2.568	299.2	3.252	3.414
10/21/11 0:00	-9.9	93.6	3.303	299.9	3.649	0	296.4	3.346	2.793	296.7	3.473	3.506
10/21/11 1:00	-9.93	93.6	3.164	298.2	3.954	0	299	3.212	3.137	299	3.098	3.414
10/21/11 2:00	-10.06	93.4	3.053	298.3	3.633	0	299.6	2.745	3.041	298.4	2.733	4.006
10/21/11 3:00	-10.34	93.3	2.756	301.8	3.784	0	306.2	2.788	4.273	305.4	2.803	4.141
10/21/11 4:00	-10.66	93.2	2.888	306	4.123	0	305.2	3.014	3.441	307.2	2.944	3.682
10/21/11 5:00	-10.83	93.1	2.991	307.7	4.254	0	303.7	2.9	4.194	305.8	3.052	4.029
10/21/11 6:00	-10.95	93	2.861	305.4	4.174	0	305.8	2.914	4.562	305.3	2.866	4.324
10/21/11 7:00	-11.09	92.8	3.126	306.6	4.427	0	309.1	8.11	3.937	308.4	4.512	3.821
10/21/11 8:00	-11.26	92.5	7.99	310.3	4.36	0	313.5	7.28	3.949	312	8.33	4.157
10/21/11 9:00	-11.46	92.3	8.44	308.5	4.073	0	304.3	9.73	3.471	305.4	9.57	3.651
10/21/11 10:00	-11.42	92	8.8	305	3.922	0	308.7	7.11	4.752	308.8	7.22	4.751
10/21/11 11:00	-11.35	91.2	7.03	312.3	4.326	0	315.2	6.775	4.811	314.8	7.08	4.348
10/21/11 12:00	-11.37	90.3	6.875	315.7	4.619	0	321.2	6.748	4.039	317.7	6.306	4.797
10/21/11 13:00	-11.46	89.3	6.943	318.1	4.563	0	316.3	6.833	3.78	318.9	6.56	4.493
10/21/11 14:00	-11.9	88.8	5.821	319.2	4.587	0	317.4	5.326	3.704	319.4	5.539	3.663
10/21/11 15:00	-12.13	88.5	5.916	317.1	4.178	0	323.2	5.936	2.342	320.7	5.936	3.997
10/21/11 16:00	-12.53	86.9	5.751	323.3	3.796	0	321.3	5.837	3.17	322.5	5.84	3.423
10/21/11 17:00	-13.2	87.1	6.23	315.7	4.197	0	310.7	7.35	3.679	310.2	7.54	4.089
10/21/11 18:00	-14.06	89.3	6.23	307.5	3.931	0	305.4	4.394	3.778	306.2	4.565	4.251
10/21/11 19:00	-15.1	90.8	3.582	316.7	6.45	0	318.7	3.548	5.27	320.5	3.577	5.202
10/21/11 20:00	-15.77	91.1	4.752	311.2	3.503	0	314.1	5.356	2.977	314.9	5.17	3.256
10/21/11 21:00	-15.74	91.1	4.591	309.3	4.604	0	300.1	5.396	2.782	300.7	5.111	3.564
10/21/11 22:00	-15.97	91.5	6.383	293.9	3.339	0	288.8	6.619	3.486	289.1	6.563	3.467
10/21/11 23:00	-15.99	91.3	6.821	285.3	3.07	0	282.3	6.611	2.637	282.1	6.927	2.334

	Hourly Avg. Temp.	Hourly Avg. Rel. Humidity	Hourly Wind Speed	Hourly Wind Direction	Hourly Wind S.D.	Hourly Rainfall	2 Minute Wind Direction	2 Minute Wind Speed	2 Minute Wind S.D.	10 Minute Wind Direction	10 Minute Wind Speed	10 Minute Wind S.D.
Koala Hourly Array	Degrees C	%	m/s	Degrees	Degrees	mm	Degrees	m/s	Degrees	Degrees	m/s	Degrees
Collect Date/Time												
10/22/11 0:00	-15.83	91.6	6.805	282.4	2.923	0	280.5	6.418	2.785	282.7	6.665	2.93
10/22/11 1:00	-14.54	92.3	5.585	280.5	3.853	0	285.3	4.642	3.252	283.1	5.102	3.932
10/22/11 2:00	-14.38	92	3.701	296	4.376	0	300.5	3.124	4.454	299.8	3.074	3.813
10/22/11 3:00	-14.26	92.3	3.329	299.7	3.916	0	294.5	3.667	3.335	296.6	3.482	3.901
10/22/11 4:00	-13.08	93	4.302	290.6	4.298	0	288	4.812	3.483	289.6	4.688	4.062
10/22/11 5:00	-12.87	92.8	5.304	284.4	3.72	0	284.1	5.535	3.465	283.3	5.415	3.638
10/22/11 6:00	-12.93	92.9	5.229	280.4	3.751	0	276.5	5.574	3.472	277.2	5.408	3.569
10/22/11 7:00	-12.15	93.7	5.272	281.3	3.342	0	279.3	4.843	3.463	282.7	4.74	3.665
10/22/11 8:00	-11.38	94.1	4.912	281.9	3.927	0	275	5.239	3.442	274.8	5.356	3.854
10/22/11 9:00	-10.32	94.9	5.346	263.7	4.834	0	262.6	5.535	4.048	263.2	5.13	4.16
10/22/11 10:00	-9.45	95.3	5.398	238.7	5.679	0	227	6.495	3.696	228	6.22	4.87
10/22/11 11:00	-9.15	95	6.334	230.1	5.138	0	229.3	7.57	5.036	230.9	6.456	5.606
10/22/11 12:00	-9.01	94.7	7.32	230	4.748	0	228.3	6.93	5.468	226.7	6.972	4.718
10/22/11 13:00	-8.88	94.6	6.921	217.3	5.859	0	206.3	6.643	5.898	208.3	6.622	5.55
10/22/11 14:00	-8.84	93.2	6.77	201.5	6.104	0	201.5	6.718	3.204	198.1	7.25	5.144
10/22/11 15:00	-8.64	93.5	6.703	200.7	5.977	0	190.8	6.983	2.904	192.7	6.764	5.06
10/22/11 16:00	-8.62	95.4	6.167	185.6	8.83	0	175.4	6.647	5.353	174.8	7.12	4.269
10/22/11 17:00	-9.01	95.6	6.025	175.9	5.75	0	170.9	6.052	4.291	172.4	5.833	4.264
10/22/11 18:00	-9.56	95.3	5.477	167.9	5.282	0	183.6	4.395	5.488	178.8	4.806	5.474
10/22/11 19:00	-9.84	95.1	5.053	179.9	5.962	0	187.1	6.284	5.555	190.8	4.898	7.02
10/22/11 20:00	-10.06	95	4.841	176.9	5.702	0	179	4.158	3.125	175.7	3.9	4.02
10/22/11 21:00	-9.98	95	5.027	178.6	4.64	0	168	6.215	3.807	173.3	5.542	5.096
10/22/11 22:00	-10.55	94.6	4.849	171.9	4.441	0	181.3	3.311	3.777	180.8	3.717	4.605
10/22/11 23:00	-10.64	94.3	3.592	182.1	4.43	0	188.4	2.187	5.161	188.2	2.53	5.272
10/23/11 0:00	-10.86	94.8	3.036	184.4	5.205	0	182.5	3.851	3.272	181.7	3.953	3.589
10/23/11 1:00	-9.72	95.3	3.24	192.4	6.561	0	203.8	3.403	3.967	199.6	3.339	6.216
10/23/11 2:00	-8.84	95.8	3.348	183.8	8.64	0	170.9	3.63	4.101	176.4	3.663	5.026
10/23/11 3:00	-8.79	95.6	3.291	173.8	4.339	0	176.3	3.545	4.187	174.8	3.271	3.968
10/23/11 4:00	-8.79	95.9	3.232	180.8	5.045	0	178.1	2.869	3.033	181.2	2.851	4.805
10/23/11 5:00	-8.4	96.1	2.34	174.7	6.716	0	179.7	1.937	7.43	179.8	1.922	6.986
10/23/11 6:00	-7.75	96.6	1.669	192.9	7.49	0	195.9	1.582	5.325	195.5	1.77	5.717
10/23/11 7:00	-6.843	97.2	1.489	196	7.93	0	197.8	1.189	6.346	199.6	1.114	8.02
10/23/11 8:00	-6.029	97.6	1.922	204.2	6.463	0	203.8	2.22	5.542	205.9	2.205	4.955
10/23/11 9:00	-5.348	98	2.394	203.3	6.316	0	202.3	2.227	6.385	202.4	2.418	5.003
10/23/11 10:00	-4.868	98.1	2.351	207.7	5.719	0	212.4	2.266	6.647	209.7	2.111	5.579
10/23/11 11:00	-3.986	98.8	2.389	204.3	7.19	0	207.5	2.586	4.953	203.6	2.71	5.86
10/23/11 12:00	-2.989	99.1	2.997	197.9	6.435	0	193.2	3.181	5.26	192.5	3.289	5.726
10/23/11 13:00	-1.975	99.6	3.004	189	5.805	0	183.7	3.356	6.267	182.6	3.17	5.534
10/23/11 14:00	-1.373	99.8	8.4	178.1	5.226	0	174.6	9.21	6.808	175	9.67	5.35
10/23/11 15:00	-1.14	99.9	9.95	170.3	5.498	0	162.5	10.7	4.753	166.4	10.6	5.399
10/23/11 16:00	-1.192	100	11.16	162.9	5.179	0	162.8	11.77	3.647	161.4	11.97	5.048
10/23/11 17:00	-1.291	100	10.52	159	4.965	0	153.8	10.58	4.078	156.2	10.39	5.699
10/23/11 18:00	-1.155	100.2	7.71	137.9	4.829	0	132.1	6.512	3.11	131.5	6.694	3.84
10/23/11 19:00	-1.555	100	5.981	126.2	4.84	0	113.4	5.975	5.271	112.5	5.888	4.463
10/23/11 20:00	-2.043	99.7	5.149	113.8	4.901	0	108.6	5.678	3.812	113.5	5.446	5.875
10/23/11 21:00	-2.63	99.4	6.374	108.3	4.719	0	112.9	8.17	3.89	110.9	7.25	4.842
10/23/11 22:00	-3.369	98.4	7.79	101	5.297	0	93.4	8.01	3.131	93.7	8.17	4.312
10/23/11 23:00	-3.68	98.1	6.616	96.3	5.204	0	98.4	6.984	6.168	99.1	7.18	5.437
10/24/11 0:00	-4.265	96.1	7.44	102	5.05	0	100.4	8.01	4.549	100.3	8.05	5.007
10/24/11 1:00	-4.704	97.9	6.898	99.1	5.37	0	96.6	6.155	5.589	99.2	6.514	5.596
10/24/11 2:00	-4.928	97.8	6.712	99.9	5.985	0	100	7.32	3.867	100.7	6.751	5.587
10/24/11 3:00	-5.058	98.2	6.504	94.2	5.574	0	92.5	4.876	6.839	92.7	5.607	6.407
10/24/11 4:00	-5.1	98.7	5.403	96	6.059	0	98.2	4.412	5.48	96.1	4.26	5.787
10/24/11 5:00	-4.548	98.5	5.201	94.4	5.712	0	78.6	5.424	5.091	81.5	5.548	5.431
10/24/11 6:00	-4.683	97.7	6.157	64.73	6.198	0	64.96	5.838	6.49	64.08	5.932	5.512
10/24/11 7:00	-5.456	97.7	5.887	62.37	6.067	0	64.61	6.132	6.778	57.19	5.566	7.68
10/24/11 8:00	-5.821	97.1	5.902	71.4	7.6	0	66.43	5.532	6.522	66.89	6.224	6.641
10/24/11 9:00	-5.867	96.1	5.062	66.57	9.27	0	73.1	5.429	4.63	69.72	4.59	7.03
10/24/11 10:00	-6.042	97.2	5.184	96.5	7.26	0	95.3	4.679	4.964	104.8	4.736	7.02
10/24/11 11:00	-6.268	97.2	4.097	105.2	8	0	86	4.819	4.123	90.3	4.752	7.86
10/24/11 12:00	-5.894	96.5	5.487	80.5	6.345	0	81.1	6.655	4.143	76.3	6.085	6.314
10/24/11 13:00	-5.953	96.1	5.165	80	4.827	0	80.4	5.396	4.022	81.6	5.212	4.568
10/24/11 14:00	-5.765	97.5	4.096	89.9	6.848	0	98.5	4.166	4.835	98.4	4.013	5.329
10/24/11 15:00	-6.307	97.3	4.451	110.3	7.57	0	116.5	3.692	2.316	115.5	4.081	4.395
10/24/11 16:00	-7.12	96.3	3.668	121.7	5.742	0	125.6	2.393	4.145	128.1	2.234	6.402
10/24/11 17:00	-7.92	96.5	2.863	122	8.06	0	116.4	3.82	4.309	123.9	3.832	9.02
10/24/11 18:00	-8.03	96.4	3.453	120.1	5.388	0	130.7	2.629	3.838	131	3.086	4.759
10/24/11 19:00	-7.94	96.7	2.951	125.7	6.706	0	116.2	3.006	3.641	119.7	2.957	6.928
10/24/11 20:00	-7.69	96.9	3.446	122.9	4.671	0	126.4	3.15	4.209	122.1	3.19	5.208
10/24/11 21:00	-7.8	96.6	3.205	120.6	5.622	0	118.6	3.556	3.117	115.8	3.627	4.833
10/24/11 22:00	-7.45	97	3.682	119.7	4.541	0	115	3.665	3.523	115.6	4.019	4.351
10/24/11 23:00	-6.807	97.4	3.637	114.5	5.117	0	109	3.426	5.023	117.5	3.209	6.799

	Hourly Avg. Temp.	Hourly Avg. Rel. Humidity	Hourly Wind Speed	Hourly Wind Direction	Hourly Wind S.D.	Hourly Rainfall	2 Minute Wind Direction	2 Minute Wind Speed	2 Minute Wind S.D.	10 Minute Wind Direction	10 Minute Wind Speed	10 Minute Wind S.D.
Koala Hourly Array	Degrees C	%	m/s	Degrees	Degrees	mm	Degrees	m/s	Degrees	Degrees	m/s	Degrees
Collect Date/Time												
10/25/11 0:00	-6.419	96.6	5.996	66.75	7.49	0	41.31	4.492	4.908	44.72	5.266	4.964
10/25/11 1:00	-8.31	94.5	5.807	33.19	5.27	0	30.56	7.33	4.442	26.21	6.801	6.216
10/25/11 2:00	-10.47	94.8	6.113	15.61	6.75	0	10.2	4.955	5.146	10.49	5.12	6.142
10/25/11 3:00	-11.29	94.5	4.585	25.25	7.08	0	32.38	4.471	4.645	40.03	4.911	6.036
10/25/11 4:00	-11.15	94	4.474	28.62	6.299	0	26.93	4.141	5.353	24.35	4.331	6.734
10/25/11 5:00	-11.36	93.6	2.879	10.64	7.62	0	0.019	3.38	7.41	355.9	2.977	6.636
10/25/11 6:00	-11.47	92.7	2.785	5.244	10.59	0	348.9	2.799	3.459	355.8	2.749	10.42
10/25/11 7:00	-11.48	92.6	2.314	343	5.758	0	344.9	1.894	8.13	342.8	1.902	5.083
10/25/11 8:00	-11.4	92.6	1.448	333.4	7.45	0	332.5	1.044	4.016	332.8	1.159	4.733
10/25/11 9:00	-11.4	93.5	1.179	236.7	23.09	0	225.5	1.073	2.616	227.8	1.391	5.303
10/25/11 10:00	-11.29	93	1.297	261.3	9.35	0	269.9	1.339	2.39	267.1	1.374	2.695
10/25/11 11:00	-11.13	92.5	1.264	270.2	7.77	0	276.2	1.192	4.437	284.3	1.277	7.41
10/25/11 12:00	-10.87	92	2.13	270.2	5.821	0	257	2.012	6.368	259.6	2.243	5.421
10/25/11 13:00	-10.54	92.3	2.544	259.1	5.203	0	248	3.119	3.291	251.4	2.967	4.78
10/25/11 14:00	-9.97	93.1	2.975	245.6	5.475	0	224.2	2.493	3.02	229.2	2.628	5.952
10/25/11 15:00	-9.39	93.4	3.312	195.6	5.694	0	180.9	4.111	3.084	182.3	3.775	5.084
10/25/11 16:00	-9.4	93.9	3.62	198.8	6.076	0	221.2	3.792	3.83	220.1	3.717	4.816
10/25/11 17:00	-8.44	95.7	4.485	210.9	4.621	0	199.5	5.323	4.546	202.8	5.07	5.047
10/25/11 18:00	-7.88	95.6	6.686	206.1	4.667	0	209.9	6.525	4.58	210.3	6.598	4.514
10/25/11 19:00	-7.22	96.7	7.24	210.5	4.342	0	214.9	7.04	5.03	214.2	7.12	4.566
10/25/11 20:00	-6.261	97.4	6.918	216.6	4.58	0	217.6	6.812	3.28	220.9	6.669	4.37
10/25/11 21:00	-5.358	98	7.2	216.2	5.4	0	211.6	8.03	4.085	213.1	7.65	5.901
10/25/11 22:00	-4.157	98.9	7.64	202.1	4.883	0	192.6	7.42	3.939	192.4	7.94	3.749
10/25/11 23:00	-3.388	98.8	7.72	193.1	4.571	0	189.1	8.13	3.124	189.7	8.12	3.535
10/26/11 0:00	-2.933	99.1	9.23	168.9	6.578	0	167	10.15	6.015	166.3	10.43	6.054
10/26/11 1:00	-2.881	99	10.77	166	5.778	0	163.9	11.42	4.817	164.7	10.84	6.39
10/26/11 2:00	-3.096	98.5	11.3	161.2	5.245	0	157.5	10.49	3.993	154.9	11.37	4.225
10/26/11 3:00	-3.357	98	10.3	166.9	6.988	0	172.9	8.72	4.841	175.7	8.43	6.524
10/26/11 4:00	-3.408	97.8	8.94	180.6	5.814	0	186.4	8.11	4.228	183.5	8.67	5.627
10/26/11 5:00	-3.205	97.9	9.75	179.5	5.709	0	182.2	9.91	5.786	180.2	10.59	4.382
10/26/11 6:00	-3.239	98	10.65	182.4	5.219	0	181.1	9.94	4.745	181.3	10.43	5.596
10/26/11 7:00	-2.881	98.4	9.79	177.8	5.338	0	180.7	9.47	4.176	182.8	9.67	4.326
10/26/11 8:00	-2.615	97.9	10.63	179.3	5.585	0	186.9	9.76	4.779	183.7	11.4	6.172
10/26/11 9:00	-2.424	97.6	11.18	181.6	5.153	0	178.5	11.85	4.136	180	11.89	4.315
10/26/11 10:00	-2.284	97.7	11.52	178.2	5.111	0	178.9	11.94	4.046	178.5	11.52	3.883
10/26/11 11:00	-2.135	98	9.85	182.9	5.759	0	186.4	10.73	5.013	187.6	11.43	5.053
10/26/11 12:00	-2.09	97.9	11.29	189.6	5.286	0	191.2	11.79	3.245	190.6	11.18	4.45
10/26/11 13:00	-2.149	96.2	9.17	202.2	5.519	0	210	9.21	5.353	211.8	8.76	4.401
10/26/11 14:00	-2.017	94.8	9.51	210.5	5.068	0	209.1	10.43	4.065	212.6	9.41	4.818
10/26/11 15:00	-1.613	94.2	9.52	210.1	5.199	0	204.1	9.42	5.691	205.4	9.09	5.356
10/26/11 16:00	-1.144	93.7	8.7	206.1	5.087	0	211.8	7.87	4.786	212.2	8.03	5.076
10/26/11 17:00	-0.874	93.5	8.5	210.2	4.623	0	214.4	8.68	5.098	211.6	8.85	4.81
10/26/11 18:00	-0.742	92.6	8.24	205.5	4.789	0	198.3	6.837	6.162	201.3	7.23	5.885
10/26/11 19:00	-0.861	97.9	7.93	192.9	4.96	0	186.8	8.32	3.7	188.2	7.99	4.601
10/26/11 20:00	-0.731	99.3	8.38	187.6	4.467	0	182.4	9.28	2.971	184.9	9	4.307
10/26/11 21:00	-0.737	98.5	8.68	184.9	4.139	0	185.6	8.14	4.031	187.4	8.15	3.928
10/26/11 22:00	-0.731	99.3	8.62	179.7	4.674	0	172.1	8.91	4.052	171.2	8.8	4.013
10/26/11 23:00	-0.425	99.7	8.96	161.1	4.827	0	153.5	8.48	3.071	153.1	9.04	4.342

	Hourly Avg. Temp.	Hourly Avg. Rel. Humidity	Hourly Wind Speed	Hourly Wind Direction	Hourly Wind S.D.	Hourly Rainfall	2 Minute Wind Direction	2 Minute Wind Speed	2 Minute Wind S.D.	10 Minute Wind Direction	10 Minute Wind Speed	10 Minute Wind S.D.
Koala Hourly Array	Degrees C	%	m/s	Degrees	Degrees	mm	Degrees	m/s	Degrees	Degrees	m/s	Degrees
Collect Date/Time												
10/27/11 0:00	-0.134	100.3	7.96	145.8	5.836	0	142.2	7.16	7.43	141.9	7.01	5.847
10/27/11 1:00	0.075	100.6	5.954	138.1	4.423	0	138.9	6.412	4.911	139.4	6.053	4.686
10/27/11 2:00	-0.031	100.5	5.351	133	4.642	0	132.9	5.107	3.617	131.1	5.231	3.951
10/27/11 3:00	-0.246	97.4	5.082	120.9	5.967	0	109.1	4.988	4.493	110.8	5.102	4.751
10/27/11 4:00	-0.545	97.4	3.761	108.8	4.655	0	103.3	2.906	5.137	105	3.204	4.22
10/27/11 5:00	-1.04	99.8	1.805	132.5	5.508	0	155.6	1.302	1.014	149.5	1.401	3.461
10/27/11 6:00	-1.202	100.4	1.824	154.8	4.345	0	140.6	1.838	2.716	143.8	2.038	4.02
10/27/11 7:00	-1.189	100.4	1.668	126	4.607	0	117.9	1.192	0.732	117.3	1.23	2.053
10/27/11 8:00	-1.239	100.3	1.289	107.4	10.66	0	115.4	0.916	2.4	119.5	0.847	7.14
10/27/11 9:00	-1.331	100.3	0.879	85.9	8.21	0	50.28	1.33	2.201	52.24	0.986	3.445
10/27/11 10:00	-1.613	100	1.727	40.6	3.95	0	26.39	2.27	3.944	25.09	2.148	3.537
10/27/11 11:00	-3.914	96.5	8.9	355.4	8.66	0	340.3	12.15	5.02	339.4	13.08	4.644
10/27/11 12:00	-7.9	93.7	14.06	340.6	4.407	0	338.6	15.71	3.557	339.8	14.9	3.942
10/27/11 13:00	-9.34	92.9	15.58	341.9	4.309	0	341.8	15.72	5.058	340.2	15.81	4.472
10/27/11 14:00	-9.9	92.8	15.78	342.5	4.393	0	344.8	15.67	4.785	345.3	16.06	4.109
10/27/11 15:00	-10.73	92.7	16.35	346.2	4.137	0	348.3	15.32	3.563	348.3	15.66	3.55
10/27/11 16:00	-11.38	92.5	15.5	351.1	4.925	0	352.6	15.65	4.492	351.8	15.44	4.324
10/27/11 17:00	-11.9	91.9	14.85	351.9	7.28	0	353.5	15.05	3.932	352.4	14.02	5.07
10/27/11 18:00	-12.49	91.5	14.29	352.4	6.977	0	352.5	14.66	4.117	353.5	13.5	7.34
10/27/11 19:00	-13.21	90.4	11.91	357.5	8.55	0	5.954	10.19	14.04	3.273	10.23	9.13
10/27/11 20:00	-13.7	88.8	11.05	357.8	10.09	0	357.8	10.24	6.229	354.1	11.02	5.281
10/27/11 21:00	-15.4	87.4	9.84	354.5	8.14	0	349.9	9.09	3.353	351.9	8.91	4.494
10/27/11 22:00	-16.63	87.1	8.99	352	7.26	0	360	8.73	5.845	358.8	8.8	6.27
10/27/11 23:00	-17.53	87	7.78	354.4	6.764	0	2.016	7.52	4.646	357.4	7.8	6.713
10/28/11 0:00	-18.13	87	7.37	354.2	6.797	0	350.5	6.177	4.456	351.1	7.08	4.503
10/28/11 1:00	-18.84	87	7.62	347.6	3.54	0	343.5	8.14	4.477	343.4	8.46	3.847
10/28/11 2:00	-19.29	87.4	8.2	344.2	4.134	0	339.7	8	4.244	340.7	8.06	4.201
10/28/11 3:00	-19.91	87.1	8.18	338.2	3.291	0	335.4	8.05	3.047	336.3	8.12	3.057
10/28/11 4:00	-20.64	86.5	7.22	332.7	2.854	0	328.7	7.05	2.515	331.4	6.824	2.994
10/28/11 5:00	-21.02	86.3	6.839	328.7	2.07	0	329.1	7.24	2.102	328.8	7.08	2.172
10/28/11 6:00	-20.75	86.7	7.67	318.8	3.152	0	309.6	7.87	2.431	310.8	7.98	2.49
10/28/11 7:00	-20.5	87.2	7.81	303.5	2.823	0	299.5	8.45	2.623	300.2	8.37	2.647
10/28/11 8:00	-20.68	87.7	8.46	296	2.637	0	292.9	8.89	2.704	293.7	8.83	3.007
10/28/11 9:00	-21.09	87.3	8.38	287.7	2.537	0	281.9	7.91	1.462	280.7	7.63	2.521
10/28/11 10:00	-21.52	86.5	7.18	272.2	3.503	0	267.5	6.085	2.09	265.3	5.865	3.284
10/28/11 11:00	-20.94	86.2	5.907	266.6	3.897	0	261.4	6.251	2.288	262.9	6.142	2.694
10/28/11 12:00	-20.68	86.5	6.281	269.2	4.537	0	285.7	5.421	3.21	283.2	5.521	4.676
10/28/11 13:00	-20.06	86.8	5.012	276	5.063	0	271	4.373	5.856	273.4	4.528	5.065
10/28/11 14:00	-19.58	86.9	5.041	267.9	5.729	0	260.6	7.28	3.645	260.5	7.25	4.626
10/28/11 15:00	-19.25	87.8	7.62	262.5	5.123	0	265.3	8.2	4.147	263.2	7.76	4.257
10/28/11 16:00	-18.93	88.1	6.991	263.2	4.741	0	263.3	6.843	4.349	264.4	6.862	4.484
10/28/11 17:00	-18.66	88.5	6.968	266.9	4.427	0	264.7	7.02	4.452	265.7	7.55	4.084
10/28/11 18:00	-18	89.2	6.747	266	4.046	0	267.4	5.907	3.569	266.9	5.963	4.522
10/28/11 19:00	-17.69	89.3	6.034	267.7	4.293	0	268.1	5.963	5.563	268.1	6.059	3.948
10/28/11 20:00	-17.42	89.6	7.24	267.3	4.527	0	265.5	8.54	4.15	265.3	7.81	5.08
10/28/11 21:00	-16.89	90	8.41	262.7	4.235	0	262.9	7.56	4.053	261.2	8.05	4.089
10/28/11 22:00	-17.18	89.6	6.068	262.3	4.663	0	262.9	5.598	4.043	263.5	5.617	4.294
10/28/11 23:00	-17.09	89.8	6.027	261.9	5.152	0	262.5	6.495	5.9	262.4	6.086	5.446
10/29/11 0:00	-16.59	90.2	6.059	262.6	4.942	0	264.4	6.96	3.983	261.3	6.526	5.386
10/29/11 1:00	-15.9	90.7	7.21	265.6	4.696	0	267.2	7.76	4.615	264.8	7.48	4.687
10/29/11 2:00	-14.73	91.8	7.78	256.7	5.362	0	247.6	9.92	3.905	248.7	8.85	6.121
10/29/11 3:00	-13.57	92.5	8.52	251.7	5.732	0	258.6	9.09	4.052	260.9	8.79	4.968
10/29/11 4:00	-13.04	92.7	8.83	263	5.261	0	264.4	8.88	4.033	265.1	8.98	4.524
10/29/11 5:00	-13.43	92.5	9.57	265.6	4.873	0	267.3	8.28	4.577	266.2	9.05	4.729
10/29/11 6:00	-13.37	92.6	8.98	269.8	4.363	0	268.2	8.61	3.829	268.5	8.59	5.209
10/29/11 7:00	-12.78	93.1	9.29	268.9	4.293	0	267	9.83	4.258	267.4	9.58	4.232
10/29/11 8:00	-12.32	93.3	9.85	269.7	4.481	0	272.5	10	4.528	271.2	9.93	4.634
10/29/11 9:00	-11.69	93.9	9.55	269.6	4.464	0	268.5	9.63	4.082	269.9	9.47	4.361
10/29/11 10:00	-10.85	94.4	8.87	268	4.425	0	269	8.16	3.627	270.9	8.4	4.68
10/29/11 11:00	-10.13	94.9	8.93	267.8	4.786	0	264.5	10.18	4.195	266.3	9.46	4.823
10/29/11 12:00	-9.82	95	9.81	270.3	3.794	0	274.3	9.4	3.252	274	9.76	3.339
10/29/11 13:00	-9.38	95.4	8.83	275.4	3.376	0	276.7	7.43	3.285	277.2	7.91	3.912
10/29/11 14:00	-7.86	96.5	8.74	266.4	4.995	0	263.5	8.75	4.736	261.7	9.05	4.431
10/29/11 15:00	-7.13	96.8	9.47	260.4	4.556	0	262	10.25	4.99	261.4	10	4.497
10/29/11 16:00	-6.876	96.9	10.36	264.1	4.287	0	262.6	10.42	5.299	263	10.72	3.957
10/29/11 17:00	-6.539	97.2	10.52	262.1	3.987	0	262.2	10.41	3.443	261.2	10.52	3.986
10/29/11 18:00	-6.255	97.4	9.96	260.2	4.006	0	257.8	9.02	4.308	258.6	9.4	4.317
10/29/11 19:00	-5.767	97.7	8.64	257.3	4.092	0	255	8.65	4.32	256.1	8.73	4.272
10/29/11 20:00	-5.248	98	7.98	253.6	4.338	0	249	9	3.692	249.7	8.27	4.249
10/29/11 21:00	-4.888	98.1	7.44	254.2	4.715	0	255.5	6.955	4.73	254.3	6.84	4.869
10/29/11 22:00	-4.719	98.3	6.73	255	4.346	0	258.8	6.712	4.571	255.8	6.804	4.284
10/29/11 23:00	-4.571	98.4	6.476	254.4	4.108	0	254.2	5.92	3.961	253.4	5.888	4.297

Koala Hourly Array	Hourly Avg. Temp. Degrees C	Hourly Avg. Rel. Humidity %	Hourly Wind Speed m/s	Hourly Wind Direction Degrees	Hourly Wind S.D. Degrees	Hourly Rainfall mm	2 Minute Wind Direction Degrees	2 Minute Wind Speed m/s	2 Minute Wind S.D. Degrees	10 Minute Wind Direction Degrees	10 Minute Wind Speed m/s	10 Minute Wind S.D. Degrees
Collect Date/Time												
10/30/11 0:00	-4.259	98.6	5.471	256.5	3.878	0	258.7	5.836	2.493	258.8	5.536	2.782
10/30/11 1:00	-3.956	98.7	5.381	250.6	4.25	0	245.1	5.12	3.613	246.7	5.415	3.94
10/30/11 2:00	-3.688	98.9	5.14	244.8	3.409	0	241.6	4.605	3.317	242.7	4.699	3.477
10/30/11 3:00	-3.231	99.2	4.474	245	4.573	0	246.3	4.344	4.509	245.9	4.405	4.255
10/30/11 4:00	-2.92	99.3	4.502	247.1	4.325	0	249.4	4.338	4.066	246.2	4.365	4.731
10/30/11 5:00	-2.663	99.5	3.94	243.9	4.293	0	242.4	3.457	3.547	244.7	3.652	5.111
10/30/11 6:00	-2.108	99.8	4.327	217.9	4.835	0	209.7	4.66	3.605	208.7	4.642	4.217
10/30/11 7:00	-1.995	99.8	4.411	207.7	4.26	0	203.8	4.841	2.825	205.9	4.618	3.145
10/30/11 8:00	-3.673	98.7	5.236	203.2	4.016	0	208.4	4.706	3.415	209.6	4.974	3.304
10/30/11 9:00	-3.614	99.2	4.781	207.6	4.956	0	199	5.991	4.764	203.1	6.051	4.736
10/30/11 10:00	-3.037	99.2	5.87	197.7	5.032	0	196.9	5.322	5.035	195.2	4.968	4.636
10/30/11 11:00	-3.1	99.1	4.924	204.4	4.408	0	202.6	4.772	3.409	206.2	4.543	4.953
10/30/11 12:00	-3.134	99	4.652	206.2	4.495	0	211.8	3.826	4.22	211	3.844	4.189
10/30/11 13:00	-2.707	99.2	3.636	228.9	5.77	0	244	4.367	5.364	244.2	4.263	7.62
10/30/11 14:00	-2.264	99.6	5.03	234.6	5.012	0	236.1	6.252	3.997	235	6.093	4.753
10/30/11 15:00	-2.026	99.6	6.231	239.4	5.016	0	246.1	7.9	3.864	243.9	6.766	4.313
10/30/11 16:00	-2.356	99.4	7.14	246.2	4.579	0	245.3	7.66	4	246.2	7.09	4.238
10/30/11 17:00	-2.621	99.5	7	244.6	4.52	0	250.3	6.76	3.46	252.4	6.569	4.232
10/30/11 18:00	-2.397	99.7	7.24	250.6	4.785	0	254.5	6.504	4.153	253.1	6.706	5.01
10/30/11 19:00	-2.167	99.8	6.329	254.8	4.573	0	261.1	5.662	3.162	259.3	5.442	4.66
10/30/11 20:00	-1.926	99.9	5.461	261.5	4.054	0	256.8	5.671	4.223	255.8	5.622	3.658
10/30/11 21:00	-1.796	100	5.588	261.8	3.6	0	263.4	5.708	3.185	264.1	5.75	3.281
10/30/11 22:00	-1.796	100	5.143	261.2	3.688	0	262.2	4.947	1.981	263	5.04	3.447
10/30/11 23:00	-1.87	99.9	4.548	265	3.293	0	265.2	4.263	2.786	265.3	4.175	3.228
10/31/11 0:00	-1.739	100	4.115	267.8	3.305	0	269.8	3.979	2.528	270.9	3.953	3.192
10/31/11 1:00	-1.457	100.1	3.882	264.7	3.41	0	271.7	3.938	2.672	269.3	3.911	2.757
10/31/11 2:00	-1.338	100.2	3.57	276.7	3.581	0	284.4	3.823	1.711	282.6	3.821	2.496
10/31/11 3:00	-1.421	100.1	3.957	285.4	3.797	0	289.3	3.837	3.011	288	3.961	3.138
10/31/11 4:00	-1.341	100.2	2.952	285.3	3.304	0	290.5	2.514	2.587	287.9	2.664	3.021
10/31/11 5:00	-1.352	100.2	2.921	282.4	4.438	0	279.7	2.593	2.085	280.4	2.718	3.468
10/31/11 6:00	-1.419	100.2	2.912	275.7	5.153	0	273.3	2.695	4.533	271.3	2.761	6.327
10/31/11 7:00	-1.199	100.3	2.318	266	5.032	0	276	2.125	2.944	274.8	2.136	2.938
10/31/11 8:00	-1.248	100.3	1.925	261.6	4.508	0	269.9	1.741	1.673	263.7	1.735	5
10/31/11 9:00	-1.34	100.2	1.732	268.3	9.18	0	290.1	1.739	1.465	283.3	1.734	4.849
10/31/11 10:00	-1.653	100	2.453	304.6	3.168	0	326	3.277	1.353	323.4	3.312	2.889
10/31/11 11:00	-1.54	100	3.208	327.8	2.228	0	331.2	3.261	1.44	331.5	3.357	1.259
10/31/11 12:00	-1.452	100	3.143	339.2	2.292	0	348.5	3.04	3.016	347.4	2.867	2.605
10/31/11 13:00	-1.183	100.1	3.475	350.4	3.489	0	350.1	3.336	2.147	349.6	3.533	3.07
10/31/11 14:00	-1.314	100	3.531	351.2	5.346	0	8.74	2.026	4.212	358.2	2.269	8.54
10/31/11 15:00	-1.631	99.8	3.52	17.92	6.68	0	28.32	4.339	4.156	26.01	4.224	4.702
10/31/11 16:00	-1.858	99.8	4.8	24.61	4.539	0	21.07	4.616	5.039	22.26	4.796	3.793
10/31/11 17:00	-1.861	99.9	4.565	13.56	5.378	0	7.26	4.39	3.595	7.38	4.744	5.615
10/31/11 18:00	-2.039	99.8	5.107	14.04	4.993	0	14.04	5.351	5.827	12.41	5.475	5.83
10/31/11 19:00	-2.275	99.7	5.827	17.49	5.246	0	12.4	7.63	4.351	18	6.458	5.857
10/31/11 20:00	-2.777	99.4	7.16	13.36	4.958	0	13.28	8.11	4.849	13.76	7.37	4.851
10/31/11 21:00	-3.286	99.1	7.8	16.15	5.587	0	19.11	7.86	3.564	14.76	8.17	5.421
10/31/11 22:00	-4.101	98.6	8.47	15.22	5.042	0	16.39	9.32	5.868	15.4	9.18	5.329
10/31/11 23:00	-4.78	98.2	8.52	19.17	5.041	0	22.7	8.52	4.816	21.79	8.8	5.233

NOTE: ND= No data
Koala Meteorological Station Data.